

## ARG58011 anti-alpha 1 Antichymotrypsin antibody [AACT/1451]

Package: 50 µg  
Store at: -20°C

### Summary

Product Description	Mouse Monoclonal antibody [AACT/1451] recognizes alpha 1 Antichymotrypsin
Tested Reactivity	Hu
Tested Application	IHC-P
Host	Mouse
Clonality	Monoclonal
Clone	AACT/1451
Isotype	IgG1
Target Name	alpha 1 Antichymotrypsin
Species	Human
Immunogen	Partial recombinant Human alpha 1 Antichymotrypsin protein.
Conjugation	Un-conjugated
Alternate Names	GIG24; GIG25; Cell growth-inhibiting gene 24/25 protein; Alpha-1-antichymotrypsin; ACT; Serpin A3; AACT

### Application Instructions

Application table	Application	Dilution
	IHC-P	0.5 - 1 µg/ml

**Application Note**  
IHC-P: Antigen Retrieval: Steam tissue section in 10 mM Citrate buffer (pH 6.0) for 10-20 min.  
\* The dilutions indicate recommended starting dilutions and the optimal dilutions or concentrations should be determined by the scientist.

### Properties

Form	Liquid
Purification	Purification with Protein G.
Buffer	PBS, 0.05% Sodium azide and 0.1 mg/ml BSA.
Preservative	0.05% Sodium azide
Stabilizer	0.1 mg/ml BSA
Concentration	0.2 mg/ml
Storage instruction	For continuous use, store undiluted antibody at 2-8°C for up to a week. For long-term storage, aliquot and store at -20°C or below. Storage in frost free freezers is not recommended. Avoid repeated freeze/thaw cycles. Suggest spin the vial prior to opening. The antibody solution should be gently mixed before use.
Note	For laboratory research only, not for drug, diagnostic or other use.

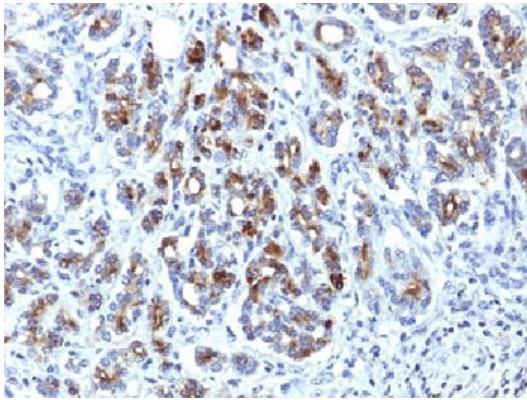
## Bioinformation

---

Gene Symbol	SERPINA3
Gene Full Name	serpin peptidase inhibitor, clade A (alpha-1 antiproteinase, antitrypsin), member 3
Background	The protein encoded by this gene is a plasma protease inhibitor and member of the serine protease inhibitor class. Polymorphisms in this protein appear to be tissue specific and influence protease targeting. Variations in this protein's sequence have been implicated in Alzheimer's disease, and deficiency of this protein has been associated with liver disease. Mutations have been identified in patients with Parkinson disease and chronic obstructive pulmonary disease. [provided by RefSeq, Jul 2008]
Function	Although its physiological function is unclear, it can inhibit neutrophil cathepsin G and mast cell chymase, both of which can convert angiotensin-1 to the active angiotensin-2. [UniProt]
Calculated Mw	48 kDa
PTM	N- and O-glycosylated. [UniProt]

## Images

---



ARG58011 anti-alpha 1 Antichymotrypsin antibody [AACT/1451] IHC-P image

Immunohistochemistry: Formalin-fixed and paraffin-embedded Human pancreas stained with ARG58011 anti-alpha 1 Antichymotrypsin antibody [AACT/1451]. Antigen Retrieval: Steam tissue section in 10mM Citrate buffer (pH 6.0) for 10-20 min.