

ARG57944 anti-ECE1 antibody

Package: 50 µl
Store at: -20°C

Summary

Product Description	Rabbit Polyclonal antibody recognizes ECE1
Tested Reactivity	Hu, Ms, Rat
Tested Application	ICC/IF, IHC-P, WB
Host	Rabbit
Clonality	Polyclonal
Isotype	IgG
Target Name	ECE1
Species	Human
Immunogen	Recombinant fusion protein corresponding to aa. 471-770 of Human ECE1 (NP_001388.1).
Conjugation	Un-conjugated
Alternate Names	ECE; Endothelin-converting enzyme 1; ECE-1; EC 3.4.24.71

Application Instructions

Application table	Application	Dilution
	ICC/IF	1:50 - 1:200
	IHC-P	1:50 - 1:200
	WB	1:500 - 1:2000
Application Note	* The dilutions indicate recommended starting dilutions and the optimal dilutions or concentrations should be determined by the scientist.	
Positive Control	Mouse lung	

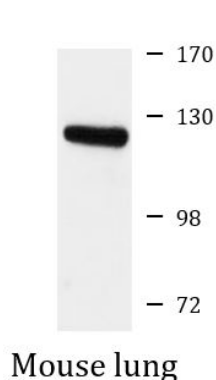
Properties

Form	Liquid
Purification	Affinity purified.
Buffer	PBS (pH 7.3), 0.02% Sodium azide and 50% Glycerol.
Preservative	0.02% Sodium azide
Stabilizer	50% Glycerol
Storage instruction	For continuous use, store undiluted antibody at 2-8°C for up to a week. For long-term storage, aliquot and store at -20°C. Storage in frost free freezers is not recommended. Avoid repeated freeze/thaw cycles. Suggest spin the vial prior to opening. The antibody solution should be gently mixed before use.
Note	For laboratory research only, not for drug, diagnostic or other use.

Bioinformation

Gene Symbol	ECE1
Gene Full Name	endothelin converting enzyme 1
Background	The protein encoded by this gene is involved in proteolytic processing of endothelin precursors to biologically active peptides. Mutations in this gene are associated with Hirschsprung disease, cardiac defects and autonomic dysfunction. Alternatively spliced transcript variants encoding different isoforms have been noted for this gene.[provided by RefSeq, Sep 2009]
Function	Converts big endothelin-1 to endothelin-1. [UniProt]
Calculated Mw	87 kDa
Cellular Localization	Cell membrane, Single-pass type II membrane protein. [UniProt]

Images



ARG57944 anti-ECE1 antibody WB image

Western blot: 25 µg of Mouse lung lysate stained with ARG57944 anti-ECE1 antibody at 1:1000 dilution.