

ARG57937 anti-CLEC4D antibody

Package: 100 µl
Store at: -20°C

Summary

Product Description	Rabbit Polyclonal antibody recognizes CLEC4D
Tested Reactivity	Hu, Ms, Rat
Tested Application	ICC/IF, WB
Host	Rabbit
Clonality	Polyclonal
Isotype	IgG
Target Name	CLEC4D
Species	Human
Immunogen	Recombinant fusion protein corresponding to aa. 39-215 of Human CLEC4D (NP_525126.2).
Conjugation	Un-conjugated
Alternate Names	CLECSF8; MCL; CLEC6; C-type lectin domain family 4 member D; C-type lectin superfamily member 8; CD368; C-type lectin-like receptor 6; MPCL; CLEC-6

Application Instructions

Application table	Application	Dilution
	ICC/IF	1:50 - 1:200
	WB	1:1000 - 1:4000
Application Note	* The dilutions indicate recommended starting dilutions and the optimal dilutions or concentrations should be determined by the scientist.	
Positive Control	293T	
Observed Size	26 kDa	

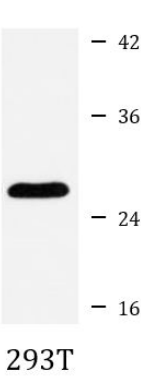
Properties

Form	Liquid
Purification	Affinity purified.
Buffer	PBS (pH 7.3), 0.02% Sodium azide and 50% Glycerol.
Preservative	0.02% Sodium azide
Stabilizer	50% Glycerol
Storage instruction	For continuous use, store undiluted antibody at 2-8°C for up to a week. For long-term storage, aliquot and store at -20°C. Storage in frost free freezers is not recommended. Avoid repeated freeze/thaw cycles. Suggest spin the vial prior to opening. The antibody solution should be gently mixed before use.
Note	For laboratory research only, not for drug, diagnostic or other use.

Bioinformation

Gene Symbol	CLEC4D
Gene Full Name	C-type lectin domain family 4, member D
Background	This gene encodes a member of the C-type lectin/C-type lectin-like domain (CTL/CTLD) superfamily. Members of this family share a common protein fold and have diverse functions, such as cell adhesion, cell-cell signalling, glycoprotein turnover, and roles in inflammation and immune response. This gene is closely linked to other CTL/CTLD superfamily members on chromosome 12p13 in the natural killer gene complex region. [provided by RefSeq, Jul 2008]
Function	Functions as an endocytic receptor. May be involved in antigen uptake at the site of infection, either for clearance of the antigen, or for processing and further presentation to T cells. [UniProt]
Calculated Mw	25 kDa
Cellular Localization	Membrane, Single-pass type II membrane protein. [UniProt]

Images



ARG57937 anti-CLEC4D antibody WB image

Western blot: 25 µg of 293T cell lysate stained with ARG57937 anti-CLEC4D antibody at 1:1000 dilution.