

## ARG57846 anti-SMARCC1 antibody

Package: 50 µl  
Store at: -20°C

### Summary

Product Description	Rabbit Polyclonal antibody recognizes SMARCC1
Tested Reactivity	Hu
Tested Application	IP, WB
Host	Rabbit
Clonality	Polyclonal
Isotype	IgG
Target Name	SMARCC1
Species	Human
Immunogen	Recombinant protein of Human SMARCC1.
Conjugation	Un-conjugated
Alternate Names	Rsc8; SRG3; SWI3; BAF155; CRACC1; SWI/SNF complex subunit SMARCC1; BAF155; BRG1-associated factor 155; SWI/SNF-related matrix-associated actin-dependent regulator of chromatin subfamily C member 1; SWI/SNF complex 155 kDa subunit

### Application Instructions

Application table	Application	Dilution
	IP	1:50 - 1:200
	WB	1:500 - 1:2000
Application Note	* The dilutions indicate recommended starting dilutions and the optimal dilutions or concentrations should be determined by the scientist.	
Positive Control	293T	

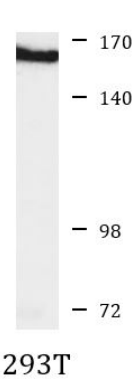
### Properties

Form	Liquid
Purification	Affinity purified.
Buffer	PBS (pH 7.3), 0.02% Sodium azide and 50% Glycerol.
Preservative	0.02% Sodium azide
Stabilizer	50% Glycerol
Storage instruction	For continuous use, store undiluted antibody at 2-8°C for up to a week. For long-term storage, aliquot and store at -20°C. Storage in frost free freezers is not recommended. Avoid repeated freeze/thaw cycles. Suggest spin the vial prior to opening. The antibody solution should be gently mixed before use.
Note	For laboratory research only, not for drug, diagnostic or other use.

Bioinformation

Gene Symbol	SMARCC1
Gene Full Name	SWI/SNF related, matrix associated, actin dependent regulator of chromatin subfamily c member 1
Background	The protein encoded by this gene is a member of the SWI/SNF family of proteins, whose members display helicase and ATPase activities and which are thought to regulate transcription of certain genes by altering the chromatin structure around those genes. The encoded protein is part of the large ATP-dependent chromatin remodeling complex SNF/SWI and contains a predicted leucine zipper motif typical of many transcription factors. [provided by RefSeq, Jul 2008]
Function	Involved in transcriptional activation and repression of select genes by chromatin remodeling (alteration of DNA-nucleosome topology). May stimulate the ATPase activity of the catalytic subunit of the complex. Belongs to the neural progenitors-specific chromatin remodeling complex (npBAF complex) and the neuron-specific chromatin remodeling complex (nBAF complex). During neural development a switch from a stem/progenitor to a postmitotic chromatin remodeling mechanism occurs as neurons exit the cell cycle and become committed to their adult state. The transition from proliferating neural stem/progenitor cells to postmitotic neurons requires a switch in subunit composition of the npBAF and nBAF complexes. As neural progenitors exit mitosis and differentiate into neurons, npBAF complexes which contain ACTL6A/BAF53A and PHF10/BAF45A, are exchanged for homologous alternative ACTL6B/BAF53B and DPF1/BAF45B or DPF3/BAF45C subunits in neuron-specific complexes (nBAF). The npBAF complex is essential for the self-renewal/proliferative capacity of the multipotent neural stem cells. The nBAF complex along with CREST plays a role regulating the activity of genes essential for dendrite growth (By similarity). [UniProt]
Calculated Mw	123 kDa
PTM	Phosphorylated on undefined residues at the G2/M transition by ERK1 and other kinases. This may contribute to cell cycle specific inactivation of remodeling complexes containing the phosphorylated protein. [UniProt]
Cellular Localization	Nucleus. [UniProt]

Images



ARG57846 anti-SMARCC1 antibody WB image

Western blot: 25 µg of 293T cell lysate stained with ARG57846 anti-SMARCC1 antibody at 1:1000 dilution.

#### ARG57846 anti-SMARCC1 antibody IP image

Immunoprecipitation: 200 µg extracts of 293T cells were immunoprecipitated and stained with ARG57846 anti-SMARCC1 antibody at 1:1000 dilution.

