

ARG57704 anti-TRIM21 antibody

Package: 100 µl
Store at: -20°C

Summary

Product Description	Rabbit Polyclonal antibody recognizes TRIM21
Tested Reactivity	Hu, Ms, Rat
Tested Application	ICC/IF, IHC-P, IP, WB
Host	Rabbit
Clonality	Polyclonal
Isotype	IgG
Target Name	TRIM21
Species	Human
Immunogen	Recombinant protein of Human TRIM21.
Conjugation	Un-conjugated
Alternate Names	RNF81; Ro; EC 6.3.2.-; SSA1; SS-A; RO52; Ro/SSA; E3 ubiquitin-protein ligase TRIM21; 52 kDa ribonucleoprotein autoantigen Ro/SS-A; Sjogren syndrome type A antigen; 52 kDa Ro protein; RING finger protein 81; SSA; Tripartite motif-containing protein 21

Application Instructions

Application table	Application	Dilution
	ICC/IF	1:50 - 1:200
	IHC-P	1:50 - 1:200
	IP	1:50 - 1:200
	WB	1:500 - 1:2000
Application Note	* The dilutions indicate recommended starting dilutions and the optimal dilutions or concentrations should be determined by the scientist.	
Positive Control	A549	
Observed Size	~ 54 kDa	

Properties

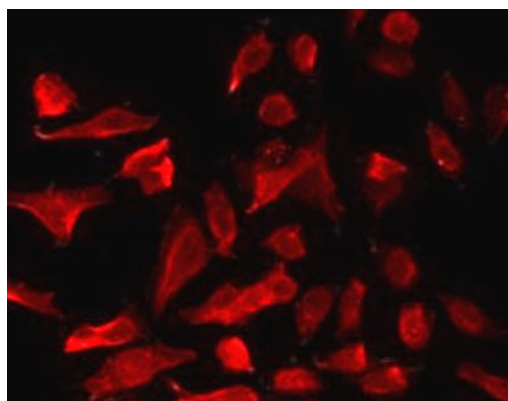
Form	Liquid
Purification	Affinity purified.
Buffer	PBS (pH 7.3), 0.02% Sodium azide and 50% Glycerol.
Preservative	0.02% Sodium azide
Stabilizer	50% Glycerol

Storage instruction	For continuous use, store undiluted antibody at 2-8°C for up to a week. For long-term storage, aliquot and store at -20°C. Storage in frost free freezers is not recommended. Avoid repeated freeze/thaw cycles. Suggest spin the vial prior to opening. The antibody solution should be gently mixed before use.
Note	For laboratory research only, not for drug, diagnostic or other use.

Bioinformation

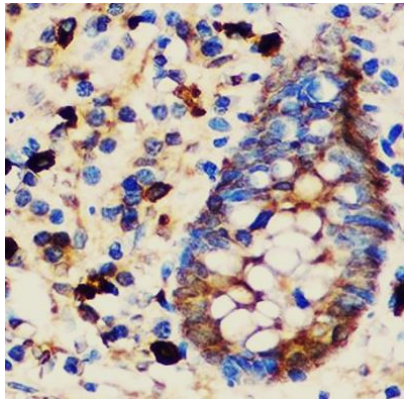
Gene Symbol	TRIM21
Gene Full Name	tripartite motif containing 21
Background	This gene encodes a member of the tripartite motif (TRIM) family. The TRIM motif includes three zinc-binding domains, a RING, a B-box type 1 and a B-box type 2, and a coiled-coil region. The encoded protein is part of the RoSSA ribonucleoprotein, which includes a single polypeptide and one of four small RNA molecules. The RoSSA particle localizes to both the cytoplasm and the nucleus. RoSSA interacts with autoantigens in patients with Sjogren syndrome and systemic lupus erythematosus. Alternatively spliced transcript variants for this gene have been described but the full-length nature of only one has been determined. [provided by RefSeq, Jul 2008]
Function	E3 ubiquitin-protein ligase whose activity is dependent on E2 enzymes, UBE2D1, UBE2D2, UBE2E1 and UBE2E2. Forms a ubiquitin ligase complex in cooperation with the E2 UBE2D2 that is used not only for the ubiquitination of USP4 and IKBKB but also for its self-ubiquitination. Component of cullin-RING-based SCF (SKP1-CUL1-F-box protein) E3 ubiquitin-protein ligase complexes such as SCF(SKP2)-like complexes. A TRIM21-containing SCF(SKP2)-like complex is shown to mediate ubiquitination of CDKN1B ('Thr-187' phosphorylated-form), thereby promoting its degradation by the proteasome. Monoubiquitinates IKBKB that will negatively regulates Tax-induced NF-kappa-B signaling. Negatively regulates IFN-beta production post-pathogen recognition by polyubiquitin-mediated degradation of IRF3. Mediates the ubiquitin-mediated proteasomal degradation of IgG1 heavy chain, which is linked to the VCP-mediated ER-associated degradation (ERAD) pathway. Promotes IRF8 ubiquitination, which enhanced the ability of IRF8 to stimulate cytokine genes transcription in macrophages. Plays a role in the regulation of the cell cycle progression. Enhances the decapping activity of DCP2. Exists as a ribonucleoprotein particle present in all mammalian cells studied and composed of a single polypeptide and one of four small RNA molecules. At least two isoforms are present in nucleated and red blood cells, and tissue specific differences in RO/SSA proteins have been identified. The common feature of these proteins is their ability to bind HY RNAs.2. [UniProt]
Calculated Mw	54 kDa
PTM	Autoubiquitinated; does not lead to its proteasomal degradation. Deubiquitinated by USP4; leading to its stabilization. [UniProt]
Cellular Localization	Cytoplasm, Cytoplasmic vesicle, Nucleus, P-body, autophagosome. [UniProt]

Images



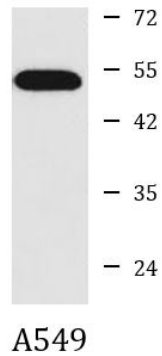
ARG57704 anti-TRIM21 antibody ICC/IF image

Immunofluorescence: U2OS cells stained with ARG57704 anti-TRIM21 antibody at 1:100 dilution.



ARG57704 anti-TRIM21 antibody IHC-P image

Immunohistochemistry: Paraffin-embedded Human appendix tissue stained with ARG57704 anti-TRIM21 antibody at 1:100 dilution.



ARG57704 anti-TRIM21 antibody WB image

Western blot: 25 µg of A549 cell lysate stained with ARG57704 anti-TRIM21 antibody at 1:1000 dilution.