

ARG57602 anti-CD49e / Integrin alpha 5 antibody

Package: 100 µl
Store at: -20°C

Summary

Product Description	Rabbit Polyclonal antibody recognizes CD49e / Integrin alpha 5
Tested Reactivity	Hu, Ms, Rat
Tested Application	FACS, ICC/IF, IHC-P, IP, WB
Host	Rabbit
Clonality	Polyclonal
Isotype	IgG
Target Name	CD49e / Integrin alpha 5
Species	Human
Immunogen	Synthetic peptide derived from Human Integrin alpha 5.
Conjugation	Un-conjugated
Alternate Names	CD49e; CD49 antigen-like family member E; Integrin alpha-F; Fibronectin receptor subunit alpha; CD antigen CD49e; VLA-5; FNRA; VLA5A; Integrin alpha-5

Application Instructions

Application table	Application	Dilution
	FACS	Assay-dependent
	ICC/IF	1:50 - 1:200
	IHC-P	Assay-dependent
	IP	Assay-dependent
	WB	1:1000 - 1:2000
	Application Note	* The dilutions indicate recommended starting dilutions and the optimal dilutions or concentrations should be determined by the scientist.

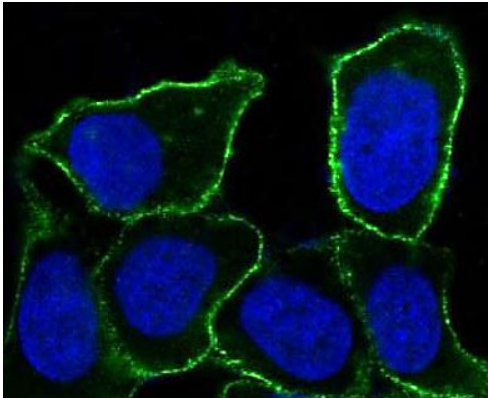
Properties

Form	Liquid
Purification	Affinity purified.
Buffer	PBS (pH 7.4), 150mM NaCl, 0.02% Sodium azide and 50% Glycerol.
Preservative	0.02% Sodium azide
Stabilizer	50% Glycerol
Storage instruction	For continuous use, store undiluted antibody at 2-8°C for up to a week. For long-term storage, aliquot and store at -20°C. Storage in frost free freezers is not recommended. Avoid repeated freeze/thaw cycles. Suggest spin the vial prior to opening. The antibody solution should be gently mixed before use.

Bioinformation

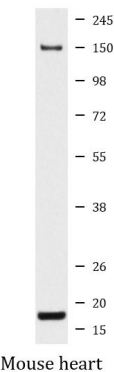
Gene Symbol	ITGA5
Gene Full Name	integrin, alpha 5 (fibronectin receptor, alpha polypeptide)
Background	The product of this gene belongs to the integrin alpha chain family. Integrins are heterodimeric integral membrane proteins composed of an alpha chain and a beta chain. This gene encodes the integrin alpha 5 chain. Alpha chain 5 undergoes post-translational cleavage in the extracellular domain to yield disulfide-linked light and heavy chains that join with beta 1 to form a fibronectin receptor. In addition to adhesion, integrins are known to participate in cell-surface mediated signalling. Integrin alpha 5 and integrin alpha V chains are produced by distinct genes. [provided by RefSeq, Jan 2015]
Function	Integrin alpha-5/beta-1 is a receptor for fibronectin and fibrinogen. It recognizes the sequence R-G-D in its ligands. In case of HIV-1 infection, the interaction with extracellular viral Tat protein seems to enhance angiogenesis in Kaposi's sarcoma lesions. [UniProt]
Calculated Mw	115 kDa
PTM	Proteolytic cleavage by PCSK5 mediates activation of the precursor. [UniProt]

Images



ARG57602 anti-CD49e / Integrin alpha 5 antibody ICC/IF image

Immunofluorescence: MCF7 cells stained with ARG57602 anti-CD49e / Integrin alpha 5 antibody.



ARG57602 anti-CD49e / Integrin alpha 5 antibody WB image

Western blot: Mouse heart lysate stained with ARG57602 anti-CD49e / Integrin alpha 5 antibody.