

## ARG57585 anti-Growth hormone Receptor antibody

Package: 100 µl  
Store at: -20°C

### Summary

Product Description	Rabbit Polyclonal antibody recognizes Growth hormone Receptor
Tested Reactivity	Hu, Ms, Rat
Tested Application	FACS, ICC/IF, WB
Specificity	The antibody detects endogenous levels of total Growth hormone receptor.
Host	Rabbit
Clonality	Polyclonal
Isotype	IgG
Target Name	Growth hormone Receptor
Species	Human
Immunogen	Synthetic peptide from Human Growth hormone receptor.
Conjugation	Un-conjugated
Alternate Names	GH-binding protein; Growth hormone receptor; GHBP; GHIP; Serum-binding protein; GH receptor; Somatotropin receptor

### Application Instructions

Application table	Application	Dilution
	FACS	1:100
	ICC/IF	1:50 - 1:200
	WB	1:500 - 1:2000
Application Note	* The dilutions indicate recommended starting dilutions and the optimal dilutions or concentrations should be determined by the scientist.	
Positive Control	MCF7	
Observed Size	~ 140 kDa (homodimers)	

### Properties

Form	Liquid
Purification	Affinity purified.
Buffer	PBS (pH 7.4), 150mM NaCl, 0.02% Sodium azide and 50% Glycerol.
Preservative	0.02% Sodium azide
Stabilizer	50% Glycerol
Storage instruction	For continuous use, store undiluted antibody at 2-8°C for up to a week. For long-term storage, aliquot and store at -20°C. Storage in frost free freezers is not recommended. Avoid repeated freeze/thaw

cycles. Suggest spin the vial prior to opening. The antibody solution should be gently mixed before use.

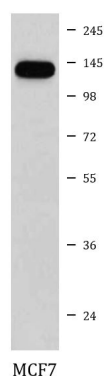
#### Note

For laboratory research only, not for drug, diagnostic or other use.

## Bioinformation

Gene Symbol	GHR
Gene Full Name	growth hormone receptor
Background	This gene encodes a member of the type I cytokine receptor family, which is a transmembrane receptor for growth hormone. Binding of growth hormone to the receptor leads to receptor dimerization and the activation of an intra- and intercellular signal transduction pathway leading to growth. Mutations in this gene have been associated with Laron syndrome, also known as the growth hormone insensitivity syndrome (GHIS), a disorder characterized by short stature. In humans and rabbits, but not rodents, growth hormone binding protein (GHBP) is generated by proteolytic cleavage of the extracellular ligand-binding domain from the mature growth hormone receptor protein. Multiple alternatively spliced transcript variants have been found for this gene.[provided by RefSeq, Jun 2011]
Function	<p>Receptor for pituitary gland growth hormone involved in regulating postnatal body growth. On ligand binding, couples to the JAK2/STAT5 pathway (By similarity).</p> <p>The soluble form (GHBP) acts as a reservoir of growth hormone in plasma and may be a modulator/inhibitor of GH signaling.</p> <p>Isoform 2 up-regulates the production of GHBP and acts as a negative inhibitor of GH signaling. [UniProt]</p>
Calculated Mw	72 kDa
PTM	<p>The soluble form (GHBP) is produced by phorbol ester-promoted proteolytic cleavage at the cell surface (shedding) by ADAM17/TACE. Shedding is inhibited by growth hormone (GH) binding to the receptor probably due to a conformational change in GHR rendering the receptor inaccessible to ADAM17 (By similarity).</p> <p>On GH binding, phosphorylated on tyrosine residues in the cytoplasmic domain by JAK2.</p> <p>On ligand binding, ubiquitinated on lysine residues in the cytoplasmic domain. This ubiquitination is not sufficient for GHR internalization (By similarity). [UniProt]</p>

## Images



ARG57585 anti-Growth hormone Receptor antibody WB image

Western blot: MCF7 cell lysate stained with ARG57585 anti-Growth hormone Receptor antibody.