

ARG57565 anti-RPGRIP1 antibody

Package: 100 µl
Store at: -20°C

Summary

Product Description	Rabbit Polyclonal antibody recognizes RPGRIP1
Tested Reactivity	Hu
Tested Application	FACS, IHC-P, WB
Host	Rabbit
Clonality	Polyclonal
Isotype	IgG
Target Name	RPGRIP1
Species	Human
Immunogen	KLH-conjugated synthetic peptide corresponding to aa. 530-557 (Center) of Human RPGRIP1.
Conjugation	Un-conjugated
Alternate Names	CORD13; X-linked retinitis pigmentosa GTPase regulator-interacting protein 1; RPGR-interacting protein 1; RGRIP; LCA6; RPGRIP1d; RGI1; RPGRIP

Application Instructions

Application table	Application	Dilution
	FACS	1:10 - 1:50
	IHC-P	1:50 - 1:100
	WB	1:1000
Application Note	* The dilutions indicate recommended starting dilutions and the optimal dilutions or concentrations should be determined by the scientist.	
Positive Control	HL-60	

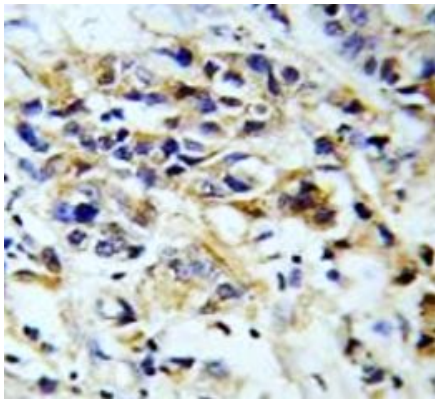
Properties

Form	Liquid
Purification	Purification with Protein A and immunogen peptide.
Buffer	PBS and 0.09% (W/V) Sodium azide.
Preservative	0.09% (W/V) Sodium azide.
Storage instruction	For continuous use, store undiluted antibody at 2-8°C for up to a week. For long-term storage, aliquot and store at -20°C or below. Storage in frost free freezers is not recommended. Avoid repeated freeze/thaw cycles. Suggest spin the vial prior to opening. The antibody solution should be gently mixed before use.
Note	For laboratory research only, not for drug, diagnostic or other use.

Bioinformation

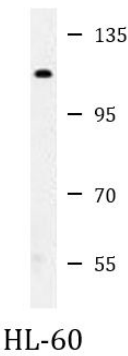
Gene Symbol	RPGRIP1
Gene Full Name	retinitis pigmentosa GTPase regulator interacting protein 1
Background	This gene encodes a photoreceptor protein that interacts with retinitis pigmentosa GTPase regulator protein and is a key component of cone and rod photoreceptor cells. Mutations in this gene lead to autosomal recessive congenital blindness. [provided by RefSeq, Oct 2008]
Function	May function as scaffolding protein. Required for normal location of RPGR at the connecting cilium of photoreceptor cells. Required for normal disk morphogenesis and disk organization in the outer segment of photoreceptor cells and for survival of photoreceptor cells. [UniProt]
Calculated Mw	147 kDa
Cellular Localization	Cell projection, cilium. Note=Situated between the axonemal microtubules and the plasma membrane {ECO:0000250 UniProtKB:Q9EPQ2}

Images



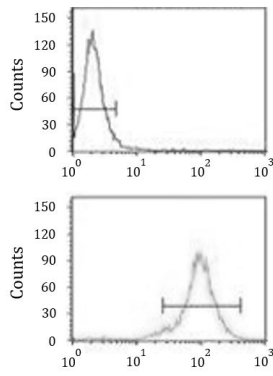
ARG57565 anti-RPGRIP1 antibody IHC-P image

Immunohistochemistry: Formalin-fixed and paraffin-embedded Human breast carcinoma tissue stained with ARG57565 anti-RPGRIP1 antibody.



ARG57565 anti-RPGRIP1 antibody WB image

Western blot: 35 µg of HL-60 cell lysate stained with ARG57565 anti-RPGRIP1 antibody.



ARG57565 anti-RPGRIP1 antibody FACS image

Flow Cytometry: MDA-MB-231 cells stained with ARG57565 anti-RPGRIP1 antibody (bottom histogram) or without primary antibody as control (top histogram), followed by incubation with FITC labelled secondary antibody.