

## ARG57558 anti-EphA5 antibody [46CT61.6.4]

Package: 100 µl  
Store at: -20°C

### Summary

Product Description	Mouse Monoclonal antibody recognizes EphA5
Tested Reactivity	Hu
Tested Application	IHC-P, WB
Host	Mouse
Clonality	Monoclonal
Clone	46CT61.6.4
Isotype	IgG1, kappa
Target Name	EphA5
Species	Human
Immunogen	Purified His-tagged EphA5 protein fragment.
Conjugation	Un-conjugated
Alternate Names	HEK7; EPH homology kinase 1; hEK7; Brain-specific kinase; EHK1; EHK-1; EPH-like kinase 7; Ephrin type-A receptor 5; EK7; TYRO4; EC 2.7.10.1; CEK7

### Application Instructions

Application table	Application	Dilution
	IHC-P	1:10 - 1:50
	WB	1:2000
Application Note	* The dilutions indicate recommended starting dilutions and the optimal dilutions or concentrations should be determined by the scientist.	
Positive Control	U-251 MG	

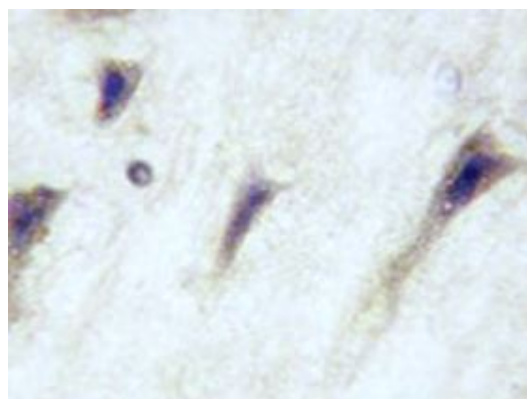
### Properties

Form	Liquid
Purification	Purification with Protein G.
Buffer	PBS and 0.09% (W/V) Sodium azide.
Preservative	0.09% (W/V) Sodium azide.
Storage instruction	For continuous use, store undiluted antibody at 2-8°C for up to a week. For long-term storage, aliquot and store at -20°C or below. Storage in frost free freezers is not recommended. Avoid repeated freeze/thaw cycles. Suggest spin the vial prior to opening. The antibody solution should be gently mixed before use.
Note	For laboratory research only, not for drug, diagnostic or other use.

## Bioinformation

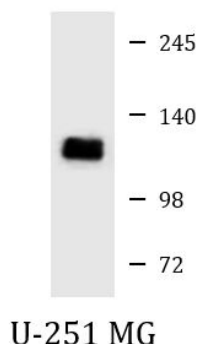
Gene Symbol	EPHA5
Gene Full Name	EPH receptor A5
Background	This gene belongs to the ephrin receptor subfamily of the protein-tyrosine kinase family. EPH and EPH-related receptors have been implicated in mediating developmental events, particularly in the nervous system. Receptors in the EPH subfamily typically have a single kinase domain and an extracellular region containing a Cys-rich domain and 2 fibronectin type III repeats. The ephrin receptors are divided into 2 groups based on the similarity of their extracellular domain sequences and their affinities for binding ephrin-A and ephrin-B ligands. Alternatively spliced transcript variants encoding different isoforms have been described. [provided by RefSeq, Aug 2013]
Function	Receptor tyrosine kinase which binds promiscuously GPI-anchored ephrin-A family ligands residing on adjacent cells, leading to contact-dependent bidirectional signaling into neighboring cells. The signaling pathway downstream of the receptor is referred to as forward signaling while the signaling pathway downstream of the ephrin ligand is referred to as reverse signaling. Among GPI-anchored ephrin-A ligands, EFNA5 most probably constitutes the cognate/functional ligand for EPHA5. Functions as an axon guidance molecule during development and may be involved in the development of the retinotectal, entorhino-hippocampal and hippocamposeptal pathways. Together with EFNA5 plays also a role in synaptic plasticity in adult brain through regulation of synaptogenesis. In addition to its function in the nervous system, the interaction of EPHA5 with EFNA5 mediates communication between pancreatic islet cells to regulate glucose-stimulated insulin secretion (By similarity). [UniProt]
Calculated Mw	115 kDa
PTM	Phosphorylated. Phosphorylation is stimulated by the ligand EFNA5. Dephosphorylation upon stimulation by glucose, inhibits EPHA5 forward signaling and results in insulin secretion (By similarity). [UniProt]
Cellular Localization	Cell membrane; Single-pass type I membrane protein. Cell projection, axon. Cell projection, dendrite

## Images



ARG57558 anti-EphA5 antibody IHC-P image

Immunohistochemistry: Formalin-fixed and paraffin-embedded Human brain tissue stained with ARG57558 anti-EphA5 antibody.



ARG57558 anti-EphA5 antibody WB image

Western blot: 35 µg of U-251 MG cell lysate stained with ARG57558 anti-EphA5 antibody at 1:1000 dilution.