

ARG57530 anti-DUSP6 antibody

Package: 100 µl
Store at: -20°C

Summary

Product Description	Rabbit Polyclonal antibody recognizes DUSP6
Tested Reactivity	Hu, Ms, Rat
Tested Application	FACS, ICC/IF, IHC-P, IP, WB
Specificity	This antibody detects endogenous levels of total DUSP6.
Host	Rabbit
Clonality	Polyclonal
Isotype	IgG
Target Name	DUSP6
Species	Human
Immunogen	Synthetic peptide of Human DUSP6.
Conjugation	Un-conjugated
Alternate Names	Dual specificity protein phosphatase PYST1; MKP-3; MAP kinase phosphatase 3; MKP3; EC 3.1.3.16; PYST1; Dual specificity protein phosphatase 6; Mitogen-activated protein kinase phosphatase 3; EC 3.1.3.48; HH19

Application Instructions

Application table	Application	Dilution
	FACS	1:50
	ICC/IF	1:50 - 1:200
	IHC-P	1:50 - 1:200
	IP	1:50
	WB	1:500 - 1:2000
Application Note	* The dilutions indicate recommended starting dilutions and the optimal dilutions or concentrations should be determined by the scientist.	
Positive Control	NIH/3T3	
Observed Size	~ 38 kDa	

Properties

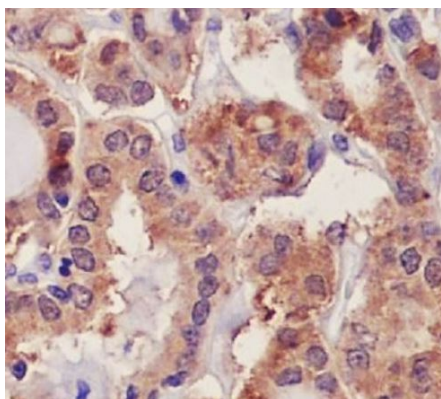
Form	Liquid
Purification	Purified by affinity chromatography.
Buffer	PBS (pH 7.4), 150 mM NaCl, 0.02% Sodium azide and 50% Glycerol.

Preservative	0.02% Sodium azide
Stabilizer	50% Glycerol
Storage instruction	For continuous use, store undiluted antibody at 2-8°C for up to a week. For long-term storage, aliquot and store at -20°C. Storage in frost free freezers is not recommended. Avoid repeated freeze/thaw cycles. Suggest spin the vial prior to opening. The antibody solution should be gently mixed before use.
Note	For laboratory research only, not for drug, diagnostic or other use.

Bioinformation

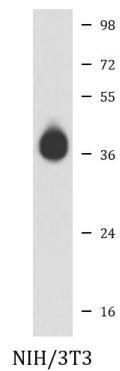
Gene Symbol	DUSP6
Gene Full Name	dual specificity phosphatase 6
Background	<p>The protein encoded by this gene is a member of the dual specificity protein phosphatase subfamily. These phosphatases inactivate their target kinases by dephosphorylating both the phosphoserine/threonine and phosphotyrosine residues. They negatively regulate members of the mitogen-activated protein (MAP) kinase superfamily (MAPK/ERK, SAPK/JNK, p38), which are associated with cellular proliferation and differentiation. Different members of the family of dual specificity phosphatases show distinct substrate specificities for various MAP kinases, different tissue distribution and subcellular localization, and different modes of inducibility of their expression by extracellular stimuli. This gene product inactivates ERK2, is expressed in a variety of tissues with the highest levels in heart and pancreas, and unlike most other members of this family, is localized in the cytoplasm. Mutations in this gene have been associated with congenital hypogonadotropic hypogonadism. Alternatively spliced transcript variants have been found for this gene. [provided by RefSeq, Jan 2014]</p>
Function	Inactivates MAP kinases. Has a specificity for the ERK family. [UniProt]
Calculated Mw	42 kDa
Cellular Localization	Nucleus

Images



ARG57530 anti-DUSP6 antibody IHC-P image

Immunohistochemistry: Paraffin-embedded Human thyroid stained with ARG57530 anti-DUSP6 antibody.



ARG57530 anti-DUSP6 antibody WB image

Western blot: NIH/3T3 cell lysate stained with ARG57530 anti-DUSP6 antibody.