

ARG57509 anti-P2RY1 / P2Y1 antibody

Package: 100 µl
Store at: -20°C

Summary

| | |
|---------------------|---|
| Product Description | Rabbit Polyclonal antibody recognizes P2RY1 / P2Y1 |
| Tested Reactivity | Hu |
| Predict Reactivity | Bov, Rat, Chk |
| Tested Application | WB |
| Host | Rabbit |
| Clonality | Polyclonal |
| Isotype | IgG |
| Target Name | P2RY1 / P2Y1 |
| Species | Human |
| Immunogen | KLH-conjugated synthetic peptide corresponding to aa. 231-260 (Center) of Human P2RY1 / P2Y1. |
| Conjugation | Un-conjugated |
| Alternate Names | P2Y1; P2Y purinoceptor 1; ATP receptor; Purinergic receptor; P2Y1 Receptor |

Application Instructions

| | | |
|-------------------|--|----------|
| Application table | Application | Dilution |
| | WB | 1:1000 |
| Application Note | * The dilutions indicate recommended starting dilutions and the optimal dilutions or concentrations should be determined by the scientist. | |
| Positive Control | NCI-H292 | |

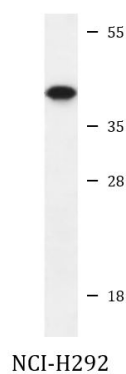
Properties

| | |
|---------------------|--|
| Form | Liquid |
| Purification | Purification with Protein A and immunogen peptide. |
| Buffer | PBS and 0.09% (W/V) Sodium azide. |
| Preservative | 0.09% (W/V) Sodium azide. |
| Storage instruction | For continuous use, store undiluted antibody at 2-8°C for up to a week. For long-term storage, aliquot and store at -20°C or below. Storage in frost free freezers is not recommended. Avoid repeated freeze/thaw cycles. Suggest spin the vial prior to opening. The antibody solution should be gently mixed before use. |
| Note | For laboratory research only, not for drug, diagnostic or other use. |

Bioinformation

| | |
|-----------------------|--|
| Gene Symbol | P2RY1 |
| Gene Full Name | purinergic receptor P2Y, G-protein coupled, 1 |
| Background | The product of this gene belongs to the family of G-protein coupled receptors. This family has several receptor subtypes with different pharmacological selectivity, which overlaps in some cases, for various adenosine and uridine nucleotides. This receptor functions as a receptor for extracellular ATP and ADP. In platelets binding to ADP leads to mobilization of intracellular calcium ions via activation of phospholipase C, a change in platelet shape, and probably to platelet aggregation. [provided by RefSeq, Jul 2008] |
| Function | Receptor for extracellular adenine nucleotides such as ATP and ADP. In platelets binding to ADP leads to mobilization of intracellular calcium ions via activation of phospholipase C, a change in platelet shape, and probably to platelet aggregation. [UniProt] |
| Calculated Mw | 42 kDa |
| Cellular Localization | Cell membrane; Multi-pass membrane protein. |

Images



ARG57509 anti-P2RY1 / P2Y1 antibody WB image

Western blot: 35 µg of NCI-H292 cell lysate stained with ARG57509 anti-P2RY1 / P2Y1 antibody.