

ARG57350 anti-BRIP1 antibody

Package: 100 µl
Store at: -20°C

Summary

Product Description	Rabbit Polyclonal antibody recognizes BRIP1
Tested Reactivity	Hu
Tested Application	WB
Host	Rabbit
Clonality	Polyclonal
Isotype	IgG
Target Name	BRIP1
Species	Human
Immunogen	Recombinant Protein of Human BRIP1.
Conjugation	Un-conjugated
Alternate Names	BRCA1-interacting protein C-terminal helicase 1; ATP-dependent RNA helicase BRIP1; OF; BACH1; BRCA1-interacting protein 1; EC 3.6.4.13; Protein FACJ; BRCA1-associated C-terminal helicase 1; FANCI; Fanconi anemia group J protein

Application Instructions

Application table	Application	Dilution
	WB	1:500 - 1:2000
Application Note	* The dilutions indicate recommended starting dilutions and the optimal dilutions or concentrations should be determined by the scientist.	
Positive Control	Mouse liver	

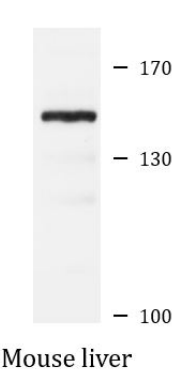
Properties

Form	Liquid
Purification	Affinity purification with immunogen.
Buffer	PBS (pH 7.3), 0.02% Sodium azide and 50% Glycerol.
Preservative	0.02% Sodium azide
Stabilizer	50% Glycerol
Storage instruction	For continuous use, store undiluted antibody at 2-8°C for up to a week. For long-term storage, aliquot and store at -20°C. Storage in frost free freezers is not recommended. Avoid repeated freeze/thaw cycles. Suggest spin the vial prior to opening. The antibody solution should be gently mixed before use.
Note	For laboratory research only, not for drug, diagnostic or other use.

Bioinformation

Gene Symbol	BRIP1
Gene Full Name	BRCA1 interacting protein C-terminal helicase 1
Background	The protein encoded by this gene is a member of the RecQ DEAH helicase family and interacts with the BRCT repeats of breast cancer, type 1 (BRCA1). The bound complex is important in the normal double-strand break repair function of breast cancer, type 1 (BRCA1). This gene may be a target of germline cancer-inducing mutations. [provided by RefSeq, Jul 2008]
Function	DNA-dependent ATPase and 5' to 3' DNA helicase required for the maintenance of chromosomal stability. Acts late in the Fanconi anemia pathway, after FANCD2 ubiquitination. Involved in the repair of DNA double-strand breaks by homologous recombination in a manner that depends on its association with BRCA1. [UniProt]
Calculated Mw	141 kDa
PTM	Phosphorylated. Phosphorylation is necessary for interaction with BRCA1, and is cell-cycle regulated. Acetylation at Lys-1249 facilitates DNA end processing required for repair and checkpoint signaling.

Images



ARG57350 anti-BRIP1 antibody WB image

Western blot: Mouse liver lysate stained with ARG57350 anti-BRIP1 antibody.