

ARG57305 anti-CETP / Cholesteryl Ester Transfer Protein antibody

Package: 100 µl
Store at: -20°C

Summary

| | |
|---------------------|---|
| Product Description | Rabbit Polyclonal antibody recognizes CETP / Cholesteryl Ester Transfer Protein |
| Tested Reactivity | Hu |
| Tested Application | IHC-P, WB |
| Host | Rabbit |
| Clonality | Polyclonal |
| Isotype | IgG |
| Target Name | CETP / Cholesteryl Ester Transfer Protein |
| Species | Human |
| Immunogen | Recombinant Protein of Human CETP. |
| Conjugation | Un-conjugated |
| Alternate Names | HDLCQ10; Lipid transfer protein I; BPIFF; Cholesteryl ester transfer protein |

Application Instructions

| | | |
|-------------------|--|----------------|
| Application table | Application | Dilution |
| | IHC-P | 1:50 - 1:200 |
| | WB | 1:500 - 1:2000 |
| Application Note | * The dilutions indicate recommended starting dilutions and the optimal dilutions or concentrations should be determined by the scientist. | |
| Positive Control | Jurkat | |

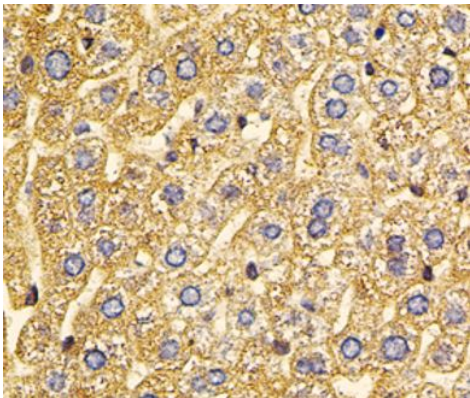
Properties

| | |
|---------------------|---|
| Form | Liquid |
| Purification | Affinity purification with immunogen. |
| Buffer | PBS (pH 7.3), 0.02% Sodium azide and 50% Glycerol. |
| Preservative | 0.02% Sodium azide |
| Stabilizer | 50% Glycerol |
| Storage instruction | For continuous use, store undiluted antibody at 2-8°C for up to a week. For long-term storage, aliquot and store at -20°C. Storage in frost free freezers is not recommended. Avoid repeated freeze/thaw cycles. Suggest spin the vial prior to opening. The antibody solution should be gently mixed before use. |
| Note | For laboratory research only, not for drug, diagnostic or other use. |

Bioinformation

| | |
|----------------|--|
| Gene Symbol | CETP |
| Gene Full Name | cholesteryl ester transfer protein, plasma |
| Background | The protein encoded by this gene is found in plasma, where it is involved in the transfer of cholesteryl ester from high density lipoprotein (HDL) to other lipoproteins. Defects in this gene are a cause of hyperalphalipoproteinemia 1 (HALP1). Two transcript variants encoding different isoforms have been found for this gene. [provided by RefSeq, Oct 2013] |
| Function | Involved in the transfer of neutral lipids, including cholesteryl ester and triglyceride, among lipoprotein particles. Allows the net movement of cholesteryl ester from high density lipoproteins/HDL to triglyceride-rich very low density lipoproteins/VLDL, and the equimolar transport of triglyceride from VLDL to HDL. Regulates the reverse cholesterol transport, by which excess cholesterol is removed from peripheral tissues and returned to the liver for elimination. [UniProt] |
| Calculated Mw | 55 kDa |

Images



ARG57305 anti-CETP / Cholesteryl Ester Transfer Protein antibody
IHC-P image

Immunohistochemistry: Paraffin-embedded Mouse liver stained with ARG57305 anti-CETP / Cholesteryl Ester Transfer Protein antibody.



ARG57305 anti-CETP / Cholesteryl Ester Transfer Protein antibody
WB image

Western blot: Jurkat cell lysate stained with ARG57305 anti-CETP / Cholesteryl Ester Transfer Protein antibody.