

ARG57215 anti-B Raf (V600E) antibody [RM8]

Package: 50 µg
Store at: -20°C

Summary

Product Description	Rabbit Monoclonal antibody [RM8] recognizes B Raf (V600E)
Tested Reactivity	Hu
Tested Application	ELISA, FACS, ICC/IF, IHC-P, WB
Specificity	This antibody reacts to the BRAF V600E mutant. No cross reactivity with wild type BRAF.
Host	Rabbit
Clonality	Monoclonal
Clone	RM8
Isotype	IgG
Target Name	B Raf (V600E)
Species	Human
Immunogen	Synthetic peptide from Human BRAF V600E mutant.
Conjugation	Un-conjugated
Alternate Names	BRAF1; v-Raf murine sarcoma viral oncogene homolog B1; Proto-oncogene B-Raf; p94; Serine/threonine-protein kinase B-raf; RAFB1; EC 2.7.11.1; B-RAF1; NS7

Application Instructions

Application table	Application	Dilution
	ELISA	0.5 - 2 µg/ml
	FACS	Assay-dependent
	ICC/IF	0.5 - 5 µg/ml
	IHC-P	0.5 - 5 µg/ml
	WB	0.5 - 2 µg/ml
	Application Note	* The dilutions indicate recommended starting dilutions and the optimal dilutions or concentrations should be determined by the scientist.

Properties

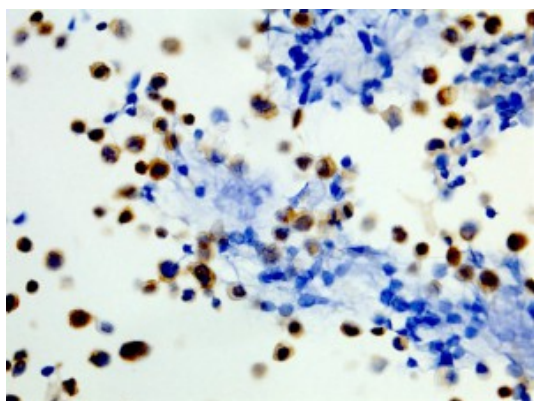
Form	Liquid
Purification	Purification with Protein A.
Buffer	PBS, 0.09% Sodium azide, 50% Glycerol and 1% BSA.
Preservative	0.09% Sodium azide
Stabilizer	50% Glycerol and 1% BSA

Concentration	1 mg/ml
Storage instruction	For continuous use, store undiluted antibody at 2-8°C for up to a week. For long-term storage, aliquot and store at -20°C. Storage in frost free freezers is not recommended. Avoid repeated freeze/thaw cycles. Suggest spin the vial prior to opening. The antibody solution should be gently mixed before use.
Note	For laboratory research only, not for drug, diagnostic or other use.

Bioinformation

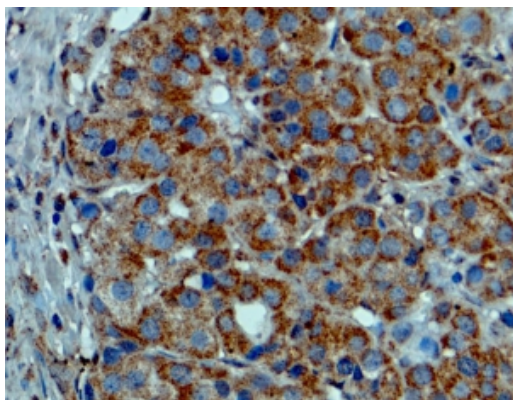
Database links	GeneID: 673 Human Swiss-port # P15056 Human
Gene Symbol	BRAF
Gene Full Name	B-Raf proto-oncogene, serine/threonine kinase
Background	This gene encodes a protein belonging to the raf/mil family of serine/threonine protein kinases. This protein plays a role in regulating the MAP kinase/ERKs signaling pathway, which affects cell division, differentiation, and secretion. Mutations in this gene are associated with cardiofaciocutaneous syndrome, a disease characterized by heart defects, mental retardation and a distinctive facial appearance. Mutations in this gene have also been associated with various cancers, including non-Hodgkin lymphoma, colorectal cancer, malignant melanoma, thyroid carcinoma, non-small cell lung carcinoma, and adenocarcinoma of lung. A pseudogene, which is located on chromosome X, has been identified for this gene. [provided by RefSeq, Jul 2008]
Function	Protein kinase involved in the transduction of mitogenic signals from the cell membrane to the nucleus. May play a role in the postsynaptic responses of hippocampal neuron. Phosphorylates MAP2K1, and thereby contributes to the MAP kinase signal transduction pathway. [UniProt]
Calculated Mw	84 kDa
PTM	Phosphorylation at Ser-365 by SGK1 inhibits its activity. Methylation at Arg-671 decreases stability and kinase activity. Ubiquitinated by RNF149; which leads to proteasomal degradation. Polyubiquitinated at Lys-578 in response to EGF.

Images



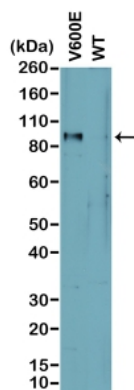
ARG57215 anti-B Raf (V600E) antibody [RM8] ICC/IF image

Immunocytochemistry: Human WiDr cells stained with ARG57215 anti-B Raf (V600E) antibody [RM8]. (400X, Positive).



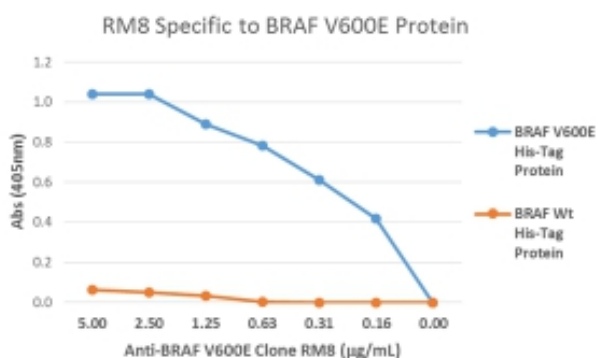
ARG57215 anti-B Raf (V600E) antibody [RM8] IHC-P image

Immunohistochemistry: Formalin-fixed and paraffin-embedded melanoma tissue sections stained with ARG57215 anti-B Raf (V600E) antibody [RM8].



ARG57215 anti-B Raf (V600E) antibody [RM8] WB image

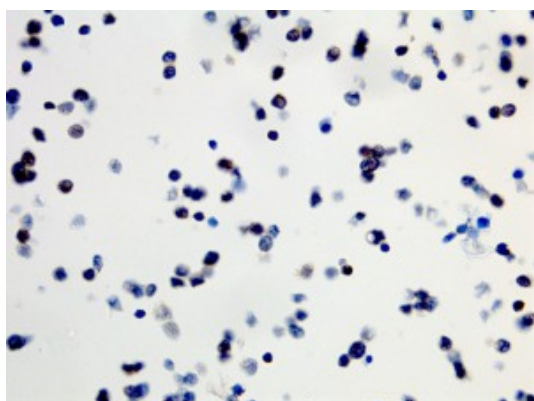
Western blot: Cell lysates prepared from cell lines expressing endogenous mutant (V600E) BRAF or wild type (WT) protein. The blots were stained with ARG57215 anti-B Raf (V600E) antibody [RM8].



ARG57215 anti-B Raf (V600E) antibody [RM8] ELISA image

Sandwich ELISA: Titration curve of ARG57215 anti-B Raf (V600E) antibody [RM8]. Antigen: Lysates of 293T cells overexpressing BRAF V600E or BRAF wild type His-tag proteins.

His-tag fusion proteins were captured by an anti-His-Tag antibody.



ARG57215 anti-B Raf (V600E) antibody [RM8] ICC/IF image

Immunocytochemistry: Human SW40 cells stained with ARG57215 anti-B Raf (V600E) antibody [RM8]. (400X, Negative).