

## ARG57187 anti-methoxy PEG antibody [RM105]

Package: 50 µg  
Store at: -20°C

### Summary

Product Description	Rabbit Monoclonal antibody [RM105] recognizes methoxy PEG
Tested Reactivity	Other
Tested Application	ELISA, IHC-P, WB
Specificity	This antibody reacts to the methoxy group of Polyethylene glycol (PEG). It is specific for methoxypoly(ethylene glycol).
Host	Rabbit
Clonality	Monoclonal
Clone	RM105
Isotype	IgG
Target Name	methoxy PEG
Species	Others
Immunogen	KLH-PEG with terminal methoxy group.
Conjugation	Un-conjugated

### Application Instructions

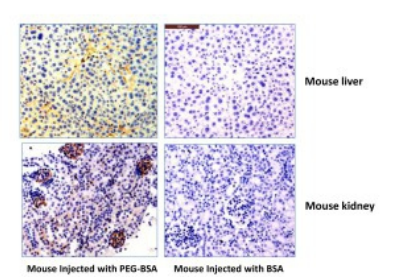
Application table	Application	Dilution
	ELISA	0.01 - 0.3 µg/ml
	IHC-P	0.5 - 2 µg/ml
	WB	0.05 - 1 µg/ml
Application Note	* The dilutions indicate recommended starting dilutions and the optimal dilutions or concentrations should be determined by the scientist.	

### Properties

Form	Liquid
Purification	Purification with Protein A.
Buffer	PBS, 0.09% Sodium azide, 50% Glycerol and 1% BSA.
Preservative	0.09% Sodium azide
Stabilizer	50% Glycerol and 1% BSA
Concentration	1 mg/ml
Storage instruction	For continuous use, store undiluted antibody at 2-8°C for up to a week. For long-term storage, aliquot and store at -20°C. Storage in frost free freezers is not recommended. Avoid repeated freeze/thaw cycles. Suggest spin the vial prior to opening. The antibody solution should be gently mixed before use.

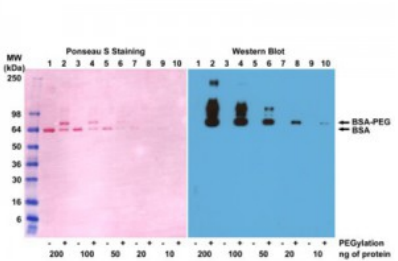
Images

ARG57187 anti-methoxy PEG antibody [RM105] IHC-P image



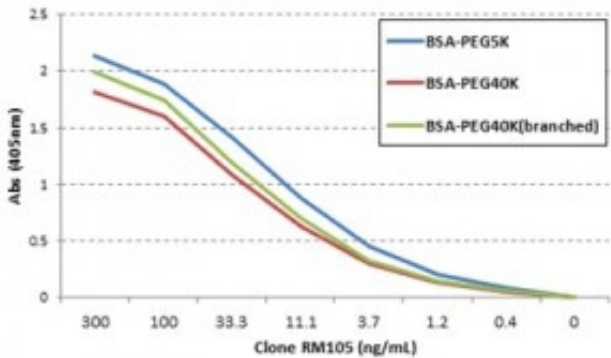
Immunohistochemistry: Paraffin-embedded Mouse liver and kidney stained with ARG57187 anti-methoxy PEG antibody [RM105] at 0.5  $\mu\text{g}/\text{ml}$ . The Mouse was injected with PEG-BSA or BSA for 3 hours before sampling.

ARG57187 anti-methoxy PEG antibody [RM105] WB image



Western blot: BSA and PEGylated BSA (mPEG 5 kDa) stained with ARG57187 anti-methoxy PEG antibody [RM105] at 0.1  $\mu\text{g}/\text{ml}$  dilution.

ARG57187 anti-methoxy PEG antibody [RM105] ELISA image



ELISA: Titration curve of ARG57187 anti-methoxy PEG antibody [RM105]. Antigen: Three different PEGylated BSAs.

Secondary antibody: AP-conjugated goat anti-rabbit IgG.