

ARG57165 anti-CAPG antibody [1D10]

Package: 50 µl
Store at: -20°C

Summary

Product Description	Mouse Monoclonal antibody [1D10] recognizes CAPG
Tested Reactivity	Hu
Tested Application	WB
Host	Mouse
Clonality	Monoclonal
Clone	1D10
Isotype	IgG2b, kappa
Target Name	CAPG
Species	Human
Immunogen	Recombinant fragment around aa. 1-348 of Human CAPG
Conjugation	Un-conjugated
Alternate Names	AFCP; Macrophage-capping protein; HEL-S-66; Actin regulatory protein CAP-G; MCP

Application Instructions

Application table	Application	Dilution
	WB	Assay-dependent
Application Note	* The dilutions indicate recommended starting dilutions and the optimal dilutions or concentrations should be determined by the scientist.	

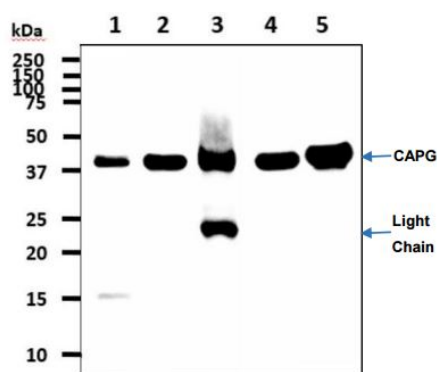
Properties

Form	Liquid
Purification	Purification with Protein A.
Buffer	PBS (pH 7.4), 0.02% Sodium azide and 10% Glycerol.
Preservative	0.02% Sodium azide
Stabilizer	10% Glycerol
Concentration	1 mg/ml
Storage instruction	For continuous use, store undiluted antibody at 2-8°C for up to a week. For long-term storage, aliquot and store at -20°C. Storage in frost free freezers is not recommended. Avoid repeated freeze/thaw cycles. Suggest spin the vial prior to opening. The antibody solution should be gently mixed before use.
Note	For laboratory research only, not for drug, diagnostic or other use.

Bioinformation

Database links	GeneID: 822 Human Swiss-port # P40121 Human
Gene Symbol	CAPG
Gene Full Name	capping protein (actin filament), gelsolin-like
Background	This gene encodes a member of the gelsolin/villin family of actin-regulatory proteins. The encoded protein reversibly blocks the barbed ends of F-actin filaments in a Ca ²⁺ and phosphoinositide-regulated manner, but does not sever preformed actin filaments. By capping the barbed ends of actin filaments, the encoded protein contributes to the control of actin-based motility in non-muscle cells. Alternatively spliced transcript variants have been observed for this gene. [provided by RefSeq, Jan 2012]
Function	Calcium-sensitive protein which reversibly blocks the barbed ends of actin filaments but does not sever preformed actin filaments. May play an important role in macrophage function. May play a role in regulating cytoplasmic and/or nuclear structures through potential interactions with actin. May bind DNA. [UniProt]
Calculated Mw	38 kDa
PTM	The N-terminus is blocked.

Images



ARG57165 anti-CAPG antibody [1D10] WB image

Western blot: 40 µg of 1) HeLa, 2) NIH3T3, 3) Mouse spleen tissue lysate, 4) THP-1, and 5) Raw 264.7 cell lysates stained with ARG57165 anti-CAPG antibody [1D10] at 1:1000.