

ARG57154 anti-S100A4 antibody [1C3]

Package: 50 µl
Store at: -20°C

Summary

Product Description	Mouse Monoclonal antibody [1C3] recognizes S100A4
Tested Reactivity	Hu
Tested Application	WB
Host	Mouse
Clonality	Monoclonal
Clone	1C3
Isotype	IgG2b, kappa
Target Name	S100A4
Species	Human
Immunogen	Recombinant fragment around aa. 1-101 of Human S100A4
Conjugation	Un-conjugated
Alternate Names	S100 calcium-binding protein A4; Placental calcium-binding protein; 42A; MTS1; FSP1; CAPL; Metastasin; Protein S100-A4; P9KA; 18A2; Protein Mts1; Calvasculin; PEL98

Application Instructions

Application table	Application	Dilution
	WB	Assay-dependent
Application Note	* The dilutions indicate recommended starting dilutions and the optimal dilutions or concentrations should be determined by the scientist.	

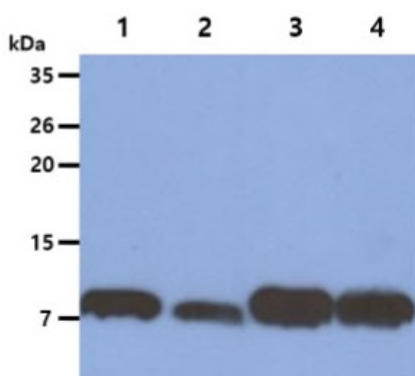
Properties

Form	Liquid
Purification	Purification with Protein A.
Buffer	PBS (pH 7.4), 0.02% Sodium azide and 10% Glycerol.
Preservative	0.02% Sodium azide
Stabilizer	10% Glycerol
Concentration	1 mg/ml
Storage instruction	For continuous use, store undiluted antibody at 2-8°C for up to a week. For long-term storage, aliquot and store at -20°C. Storage in frost free freezers is not recommended. Avoid repeated freeze/thaw cycles. Suggest spin the vial prior to opening. The antibody solution should be gently mixed before use.
Note	For laboratory research only, not for drug, diagnostic or other use.

Bioinformation

Database links	GeneID: 6275 Human Swiss-port # P26447 Human
Gene Symbol	S100A4
Gene Full Name	S100 calcium binding protein A4
Background	The protein encoded by this gene is a member of the S100 family of proteins containing 2 EF-hand calcium-binding motifs. S100 proteins are localized in the cytoplasm and/or nucleus of a wide range of cells, and involved in the regulation of a number of cellular processes such as cell cycle progression and differentiation. S100 genes include at least 13 members which are located as a cluster on chromosome 1q21. This protein may function in motility, invasion, and tubulin polymerization. Chromosomal rearrangements and altered expression of this gene have been implicated in tumor metastasis. Multiple alternatively spliced variants, encoding the same protein, have been identified. [provided by RefSeq, Jul 2008]
Highlight	Related products: S100A4 antibodies ; S100A4 Duos / Panels ; Anti-Mouse IgG secondary antibodies ; Related news: New antibody panels for Myofibroblasts and CAFs
Calculated Mw	12 kDa

Images



ARG57154 anti-S100A4 antibody [1C3] WB image

Western blot: 40 µg of 1) HeLa, 2) A549, 3) NIH/3T3, and 4) 3T3-L1 cell lysates stained with ARG57154 anti-S100A4 antibody [1C3] at 1:1000.