

ARG57127 anti-BMP2 antibody [15B3]

Package: 50 µl
Store at: -20°C

Summary

Product Description	Mouse Monoclonal antibody [15B3] recognizes BMP2
Tested Reactivity	Hu
Tested Application	WB
Host	Mouse
Clonality	Monoclonal
Clone	15B3
Isotype	IgG2b, kappa
Target Name	BMP2
Species	Human
Immunogen	Recombinant fragment around aa. 283-396 of Human BMP2
Conjugation	Un-conjugated
Alternate Names	BDA2; BMP2A; BMP-2; Bone morphogenetic protein 2A; Bone morphogenetic protein 2; BMP-2A

Application Instructions

Application table	Application	Dilution
	WB	1:1000
Application Note	* The dilutions indicate recommended starting dilutions and the optimal dilutions or concentrations should be determined by the scientist.	

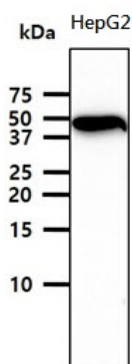
Properties

Form	Liquid
Purification	Purification with Protein A.
Buffer	PBS (pH 7.4), 0.02% Sodium azide and 10% Glycerol.
Preservative	0.02% Sodium azide
Stabilizer	10% Glycerol
Concentration	1 mg/ml
Storage instruction	For continuous use, store undiluted antibody at 2-8°C for up to a week. For long-term storage, aliquot and store at -20°C. Storage in frost free freezers is not recommended. Avoid repeated freeze/thaw cycles. Suggest spin the vial prior to opening. The antibody solution should be gently mixed before use.
Note	For laboratory research only, not for drug, diagnostic or other use.

Bioinformation

Database links	GeneID: 650 Human Swiss-port # P12643 Human
Gene Symbol	BMP2
Gene Full Name	bone morphogenetic protein 2
Background	The protein encoded by this gene belongs to the transforming growth factor-beta (TGFB) superfamily. The encoded protein acts as a disulfide-linked homodimer and induces bone and cartilage formation. [provided by RefSeq, Jul 2008]
Function	Induces cartilage and bone formation. [UniProt]
Calculated Mw	45 kDa

Images



ARG57127 anti-BMP2 antibody [15B3] WB image

Western blot: 40 µg of HepG2 cell lysate stained with ARG57127 anti-BMP2 antibody [15B3] at 1:1000.