

## ARG57046 anti-CHODL antibody [25G6]

Package: 50 µl  
Store at: -20°C

### Summary

Product Description	Mouse Monoclonal antibody [25G6] recognizes CHODL
Tested Reactivity	Hu
Tested Application	WB
Host	Mouse
Clonality	Monoclonal
Clone	25G6
Isotype	IgG2b, kappa
Target Name	CHODL
Species	Human
Immunogen	Recombinant fragment around aa. 22-216 of Human CHODL.
Conjugation	Un-conjugated
Alternate Names	Transmembrane protein MT75; Chondrolectin; MT75; C21orf68; PRED12

### Application Instructions

Application table	Application	Dilution
	WB	1:1000
Application Note	* The dilutions indicate recommended starting dilutions and the optimal dilutions or concentrations should be determined by the scientist.	

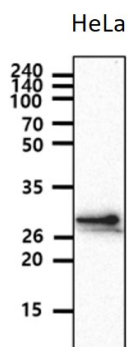
### Properties

Form	Liquid
Purification	Purification with Protein A.
Buffer	PBS (pH 7.4), 0.02% Sodium azide and 10% Glycerol.
Preservative	0.02% Sodium azide
Stabilizer	10% Glycerol
Concentration	1 mg/ml
Storage instruction	For continuous use, store undiluted antibody at 2-8°C for up to a week. For long-term storage, aliquot and store at -20°C. Storage in frost free freezers is not recommended. Avoid repeated freeze/thaw cycles. Suggest spin the vial prior to opening. The antibody solution should be gently mixed before use.
Note	For laboratory research only, not for drug, diagnostic or other use.

## Bioinformation

Database links	<a href="#">GeneID: 140578 Human</a> <a href="#">Swiss-port # Q9H9P2 Human</a>
Gene Symbol	CHODL
Gene Full Name	chondrolectin
Background	This gene encodes a type I membrane protein with a carbohydrate recognition domain characteristic of C-type lectins in its extracellular portion. In other proteins, this domain is involved in endocytosis of glycoproteins and exogenous sugar-bearing pathogens. This protein localizes predominantly to the perinuclear region. Several transcript variants encoding a few different isoforms have been found for this gene. [provided by RefSeq, Feb 2011]
Calculated Mw	30 kDa
PTM	N-glycosylated.

## Images



ARG57046 anti-CHODL antibody [25G6] WB image

Western blot: 40 µg of HeLa cell lysate stained with ARG57046 anti-CHODL antibody [25G6] at 1:1000 dilution.