

## ARG57034 anti-Cathepsin Z antibody [6G11]

Package: 50 µl  
Store at: -20°C

### Summary

Product Description	Mouse Monoclonal antibody [6G11] recognizes Cathepsin Z
Tested Reactivity	Hu
Tested Application	WB
Host	Mouse
Clonality	Monoclonal
Clone	6G11
Isotype	IgG2b, kappa
Target Name	Cathepsin Z
Species	Human
Immunogen	Recombinant fragment around aa. 62-303 of Human Cathepsin Z.
Conjugation	Un-conjugated
Alternate Names	CTSX; Cathepsin P; Cathepsin Z; Cathepsin X; EC 3.4.18.1

### Application Instructions

Application table	Application	Dilution
	WB	1:1000
Application Note	* The dilutions indicate recommended starting dilutions and the optimal dilutions or concentrations should be determined by the scientist.	

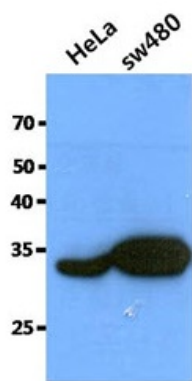
### Properties

Form	Liquid
Purification	Purification with Protein A.
Buffer	PBS (pH 7.4), 0.02% Sodium azide and 10% Glycerol.
Preservative	0.02% Sodium azide
Stabilizer	10% Glycerol
Concentration	1 mg/ml
Storage instruction	For continuous use, store undiluted antibody at 2-8°C for up to a week. For long-term storage, aliquot and store at -20°C. Storage in frost free freezers is not recommended. Avoid repeated freeze/thaw cycles. Suggest spin the vial prior to opening. The antibody solution should be gently mixed before use.
Note	For laboratory research only, not for drug, diagnostic or other use.

Bioinformation

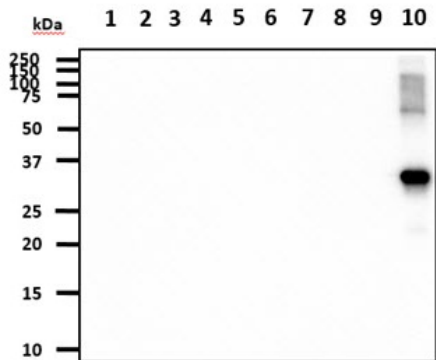
Database links	<a href="#">GeneID: 1522 Human</a> <a href="#">Swiss-port # Q9UBR2 Human</a>
Gene Symbol	CTSZ
Gene Full Name	cathepsin Z
Background	The protein encoded by this gene is a lysosomal cysteine proteinase and member of the peptidase C1 family. It exhibits both carboxy-monopeptidase and carboxy-dipeptidase activities. The encoded protein has also been known as cathepsin X and cathepsin P. This gene is expressed ubiquitously in cancer cell lines and primary tumors and, like other members of this family, may be involved in tumorigenesis. [provided by RefSeq, Oct 2008]
Function	Exhibits carboxy-monopeptidase as well as carboxy-dipeptidase activity. [UniProt]
Calculated Mw	34 kDa

Images



ARG57034 anti-Cathepsin Z antibody [6G11] WB image

Western blot: 40 µg of HeLa and SW480 cell lysates stained with ARG57034 anti-Cathepsin Z antibody [6G11] at 1:1000.



ARG57034 anti-Cathepsin Z antibody [6G11] WB image

Western blot: 20 ng of Recombinant Human 1) CTSB, 2) CTSD, 3) CTSE, 4) CTSF, 5) CTSH, 6) CTSK, 7) CTSL, 8) CTSS, 9) CTSW, and 10) CTSZ stained with ARG57034 anti-Cathepsin Z antibody [6G11] at 1:1000.