

## ARG57027 anti-Myosin Light Chain 4 antibody [4E8]

Package: 50 µl  
Store at: -20°C

### Summary

Product Description	Mouse Monoclonal antibody [4E8] recognizes Myosin Light Chain 4
Tested Reactivity	Hu
Tested Application	WB
Host	Mouse
Clonality	Monoclonal
Clone	4E8
Isotype	IgG2a, kappa
Target Name	Myosin Light Chain 4
Species	Human
Immunogen	Recombinant fragment around aa. 1-197 of Human Myosin Light Chain 4.
Conjugation	Un-conjugated
Alternate Names	Myosin light chain 1, embryonic muscle/atrial isoform; Myosin light chain alkali GT-1 isoform; PRO1957; GT1; AMLC; Myosin light chain 4; ALC1

### Application Instructions

Application table	Application	Dilution
	WB	1:1000
Application Note	* The dilutions indicate recommended starting dilutions and the optimal dilutions or concentrations should be determined by the scientist.	

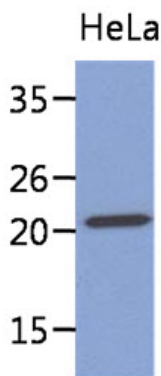
### Properties

Form	Liquid
Purification	Purification with Protein A.
Buffer	PBS (pH 7.4), 0.02% Sodium azide and 10% Glycerol.
Preservative	0.02% Sodium azide
Stabilizer	10% Glycerol
Concentration	1 mg/ml
Storage instruction	For continuous use, store undiluted antibody at 2-8°C for up to a week. For long-term storage, aliquot and store at -20°C. Storage in frost free freezers is not recommended. Avoid repeated freeze/thaw cycles. Suggest spin the vial prior to opening. The antibody solution should be gently mixed before use.
Note	For laboratory research only, not for drug, diagnostic or other use.

Bioinformation

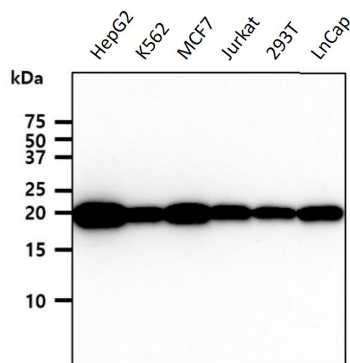
Database links	<a href="#">GeneID: 4635 Human</a> <a href="#">Swiss-port # P12829 Human</a>
Gene Symbol	MYL4
Gene Full Name	myosin, light chain 4, alkali; atrial, embryonic
Background	Myosin is a hexameric ATPase cellular motor protein. It is composed of two myosin heavy chains, two nonphosphorylatable myosin alkali light chains, and two phosphorylatable myosin regulatory light chains. This gene encodes a myosin alkali light chain that is found in embryonic muscle and adult atria. Two alternatively spliced transcript variants encoding the same protein have been found for this gene. [provided by RefSeq, Jul 2008]
Function	Regulatory light chain of myosin. Does not bind calcium. [UniProt]
Calculated Mw	22 kDa

Images



ARG57027 anti-Myosin Light Chain 4 antibody [4E8] WB image

Western blot: 40 µg of HeLa cell lysate stained with ARG57027 anti-Myosin Light Chain 4 antibody [4E8] at 1:1000.



ARG57027 anti-Myosin Light Chain 4 antibody [4E8] WB image

Western blot: 40 µg of HepG2, K562, MCF7, Jurkat, 293T and LnCap cell lysates stained with ARG57027 anti-Myosin Light Chain 4 antibody [4E8] at 1:1000 dilution.