

ARG57024 anti-Cathepsin S antibody [1F9]

Package: 50 µl
Store at: -20°C

Summary

Product Description	Mouse Monoclonal antibody [1F9] recognizes Cathepsin S
Tested Reactivity	Hu
Tested Application	WB
Host	Mouse
Clonality	Monoclonal
Clone	1F9
Isotype	IgG2b, kappa
Target Name	Cathepsin S
Species	Human
Immunogen	Recombinant fragment around aa. 17-331 of Human Cathepsin S.
Conjugation	Un-conjugated
Alternate Names	Cathepsin S; EC 3.4.22.27

Application Instructions

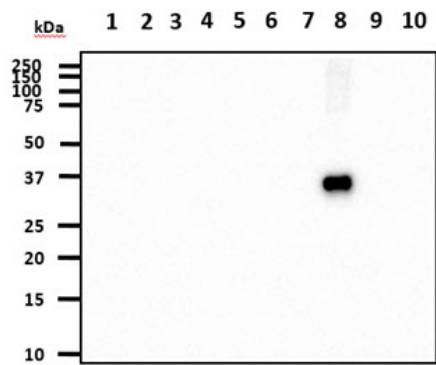
Application table	Application	Dilution
	WB	1:250 - 1:500
Application Note	* The dilutions indicate recommended starting dilutions and the optimal dilutions or concentrations should be determined by the scientist.	

Properties

Form	Liquid
Purification	Purification with Protein A.
Buffer	PBS (pH 7.4), 0.02% Sodium azide and 10% Glycerol.
Preservative	0.02% Sodium azide
Stabilizer	10% Glycerol
Concentration	1 mg/ml
Storage instruction	For continuous use, store undiluted antibody at 2-8°C for up to a week. For long-term storage, aliquot and store at -20°C. Storage in frost free freezers is not recommended. Avoid repeated freeze/thaw cycles. Suggest spin the vial prior to opening. The antibody solution should be gently mixed before use.
Note	For laboratory research only, not for drug, diagnostic or other use.

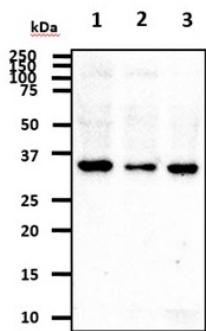
Database links	GeneID: 1520 Human Swiss-port # P25774 Human
Gene Symbol	CTSS
Gene Full Name	cathepsin S
Background	The protein encoded by this gene, a member of the peptidase C1 family, is a lysosomal cysteine proteinase that may participate in the degradation of antigenic proteins to peptides for presentation on MHC class II molecules. The encoded protein can function as an elastase over a broad pH range in alveolar macrophages. Alternatively spliced transcript variants encoding distinct isoforms have been found for this gene. [provided by RefSeq, Dec 2010]
Function	Thiol protease. Key protease responsible for the removal of the invariant chain from MHC class II molecules. The bond-specificity of this proteinase is in part similar to the specificities of cathepsin L and cathepsin N. [UniProt]
Calculated Mw	37 kDa

Images



ARG57024 anti-Cathepsin S antibody [1F9] WB image

Western blot: 20 ng of Recombinant Human 1) CTSB, 2) CTSD, 3) CTSE, 4) CTSF, 5) CTSB, 6) CTSK, 7) CTSB, 8) CTSS, 9) CTSW, and 10) CTSZ stained with ARG57024 anti-Cathepsin S antibody [1F9] at 1:1000.



ARG57024 anti-Cathepsin S antibody [1F9] WB image

Western blot: 40 µg of 1) HeLa cell lysate, 2) U87MG cell lysate, 3) A549 cell lysate stained with ARG57024 anti-Cathepsin S antibody [1F9] at 1:500.