

## ARG56924 anti-BMP7 antibody [4E7]

Package: 50 µl  
Store at: -20°C

### Summary

Product Description	Mouse Monoclonal antibody [4E7] recognizes BMP7
Tested Reactivity	Hu, Ms, Rat
Tested Application	ICC/IF, WB
Host	Mouse
Clonality	Monoclonal
Clone	4E7
Isotype	IgG1, kappa
Target Name	BMP7
Species	Human
Immunogen	Recombinant fragment around aa. 293-431 of Human BMP7.
Conjugation	Un-conjugated
Alternate Names	BMP-7; OP-1; Osteogenic protein 1; Eptotermin alfa; Bone morphogenetic protein 7

### Application Instructions

Application table	Application	Dilution
	ICC/IF	Assay-dependent
	WB	1:500 - 1:2000
Application Note	* The dilutions indicate recommended starting dilutions and the optimal dilutions or concentrations should be determined by the scientist.	

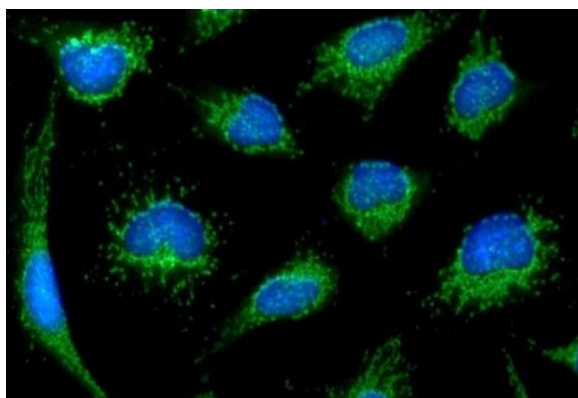
### Properties

Form	Liquid
Purification	Purification with Protein G.
Buffer	PBS (pH 7.4), 0.02% Sodium azide and 10% Glycerol.
Preservative	0.02% Sodium azide
Stabilizer	10% Glycerol
Concentration	1 mg/ml
Storage instruction	For continuous use, store undiluted antibody at 2-8°C for up to a week. For long-term storage, aliquot and store at -20°C. Storage in frost free freezers is not recommended. Avoid repeated freeze/thaw cycles. Suggest spin the vial prior to opening. The antibody solution should be gently mixed before use.
Note	For laboratory research only, not for drug, diagnostic or other use.

## Bioinformation

Database links	<a href="#">GeneID: 12162 Mouse</a>
	<a href="#">GeneID: 655 Human</a>
	<a href="#">Swiss-port # P18075 Human</a>
	<a href="#">Swiss-port # P23359 Mouse</a>
Gene Symbol	BMP7
Gene Full Name	bone morphogenetic protein 7
Background	The bone morphogenetic proteins (BMPs) are a family of secreted signaling molecules that can induce ectopic bone growth. Many BMPs are part of the transforming growth factor-beta (TGFB) superfamily. BMPs were originally identified by an ability of demineralized bone extract to induce endochondral osteogenesis in vivo in an extraskeletal site. Based on its expression early in embryogenesis, the BMP encoded by this gene has a proposed role in early development and possible bone inductive activity. [provided by RefSeq, Jul 2008]
Function	Induces cartilage and bone formation. May be the osteoinductive factor responsible for the phenomenon of epithelial osteogenesis. Plays a role in calcium regulation and bone homeostasis. [UniProt]
Calculated Mw	49 kDa
PTM	Several N-termini starting at positions 293, 300, 315 and 316 have been identified by direct sequencing resulting in secretion of different mature forms.

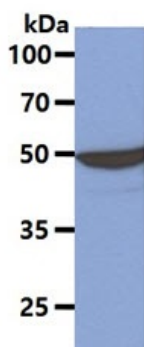
## Images



ARG56924 anti-BMP7 antibody [4E7] ICC/IF image

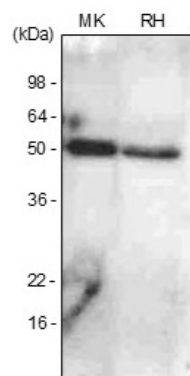
Immunofluorescence: HeLa cell line stained with ARG56924 anti-BMP7 antibody [4E7] at 1:100 (Green).

DAPI (Blue) for nucleus staining.



ARG56924 anti-BMP7 antibody [4E7] WB image

Western blot: 40 µg of Mouse brain tissue lysates stained with ARG56924 anti-BMP7 antibody [4E7] at 1:1000.



#### ARG56924 anti-BMP7 antibody [4E7] WB image

Western blot: Mouse kidney (MK) and Rat heart (RH) stained with ARG56924 anti-BMP7 antibody [4E7] at 1:1000.