

ARG56877
anti-DLL4 antibodyPackage: 100 µl
Store at: -20°C

Summary

Product Description	Rabbit Polyclonal antibody recognizes DLL4
Tested Reactivity	Hu, Ms, Rat
Tested Application	WB
Host	Rabbit
Clonality	Polyclonal
Isotype	IgG
Target Name	DLL4
Species	Human
Immunogen	KLH-conjugated synthetic peptide corresponding to aa. 608-641 of Human DLL4.
Conjugation	Un-conjugated
Alternate Names	Drosophila Delta homolog 4; hdelta2; Delta4; Delta-like protein 4

Application Instructions

Application table	Application	Dilution
	WB	1:1000 - 1:2000
Application Note	* The dilutions indicate recommended starting dilutions and the optimal dilutions or concentrations should be determined by the scientist.	
Positive Control	Human lung	

Properties

Form	Liquid
Purification	Purification with Protein A and immunogen peptide.
Buffer	PBS and 0.09% (W/V) Sodium azide.
Preservative	0.09% (W/V) Sodium azide
Storage instruction	For continuous use, store undiluted antibody at 2-8°C for up to a week. For long-term storage, aliquot and store at -20°C or below. Storage in frost free freezers is not recommended. Avoid repeated freeze/thaw cycles. Suggest spin the vial prior to opening. The antibody solution should be gently mixed before use.
Note	For laboratory research only, not for drug, diagnostic or other use.

Bioinformation

Database links	GeneID: 54485 Mouse
----------------	-------------------------------------

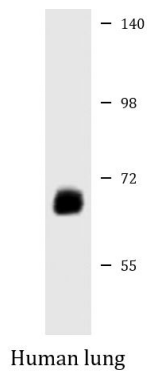
[GeneID: 54567 Human](#)

[Swiss-port # Q9JI71 Mouse](#)

[Swiss-port # Q9NR61 Human](#)

Gene Symbol	DLL4
Gene Full Name	delta-like 4 (Drosophila)
Background	This gene is a homolog of the Drosophila delta gene. The delta gene family encodes Notch ligands that are characterized by a DSL domain, EGF repeats, and a transmembrane domain. [provided by RefSeq, Jul 2008]
Function	Involved in the Notch signaling pathway as Notch ligand. Activates NOTCH1 and NOTCH4. Involved in angiogenesis; negatively regulates endothelial cell proliferation and migration and angiogenic sprouting. Essential for retinal progenitor proliferation is required for suppressing rod fates in late retinal progenitors as well as for proper generation of other retinal cell types. During spinal cord neurogenesis, inhibits V2a interneuron fate. [UniProt]
Calculated Mw	75 kDa

Images



ARG56877 anti-DLL4 antibody WB image

Western blot: 20 µg of Human lung lysate stained with ARG56877 anti-DLL4 antibody at 1:1000 - 1:2000 dilution.