

ARG56819 anti-PLGF1 antibody (Biotin)

Package: 50 µg
Store at: 4°C

Summary

Product Description	Biotin-conjugated Rabbit Polyclonal antibody recognizes PLGF1
Tested Reactivity	Hu
Tested Application	ELISA, WB
Host	Rabbit
Clonality	Polyclonal
Isotype	IgG
Target Name	PLGF1
Species	Human
Immunogen	E.coli derived Recombinant Human PLGF1. (MLPAVPPQQW ALSAGNGSSE VEVVPFQEVW GRSYCRALER LVDVVSEYPS EVEHMFSPSC VSLLRCTGCC GDENLHCVPV ETANVTMQLL KIRSGDRPSY VELTFSQHVR CECRPLREKM KPERCGDAVP RR)
Conjugation	Biotin
Alternate Names	PGFL; PIGF; PIGF-2; SHGC-10760; Placenta growth factor; D12S1900; PLGF

Application Instructions

Application table	Application	Dilution
	ELISA	Direct: 0.25 - 1.0 µg/ml Sandwich: 0.25 - 1.0 µg/ml with ARG56710 as a capture antibody
	WB	0.1 - 0.2 µg/ml
Application Note	* The dilutions indicate recommended starting dilutions and the optimal dilutions or concentrations should be determined by the scientist.	

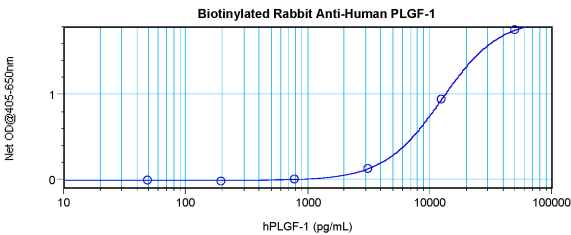
Properties

Form	Liquid
Purification	Purified by affinity chromatography.
Buffer	PBS (pH 7.2)
Concentration	1 mg/ml
Storage instruction	Aliquot and store in the dark at 2-8°C. Keep protected from prolonged exposure to light. Avoid repeated freeze/thaw cycles. Suggest spin the vial prior to opening. The antibody solution should be gently mixed before use.
Note	For laboratory research only, not for drug, diagnostic or other use.

Bioinformation

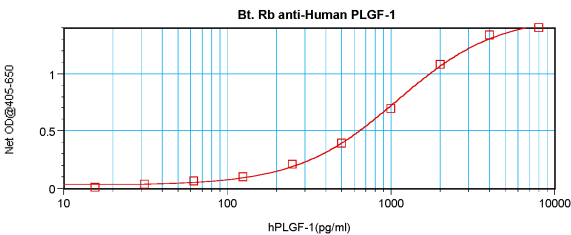
Database links	GeneID: 5228 Human Swiss-port # P49763 Human
Gene Symbol	PGF
Gene Full Name	placental growth factor
Background	This gene encodes a growth factor found in placenta which is homologous to vascular endothelial growth factor. Alternatively spliced transcripts encoding different isoforms have been found for this gene.[provided by RefSeq, Jun 2011]
Function	Growth factor active in angiogenesis and endothelial cell growth, stimulating their proliferation and migration. It binds to the receptor FLT1/VEGFR-1. Isoform PIGF-2 binds NRP1/neuropilin-1 and NRP2/neuropilin-2 in a heparin-dependent manner. Also promotes cell tumor growth. [UniProt]
Highlight	Related products: PLGF1 antibodies ; Anti-Rabbit IgG secondary antibodies ; Related news: The role of HDGF in tumor angiogenesis
Calculated Mw	25 kDa
PTM	N-glycosylated.

Images



ARG56819 anti-PLGF1 antibody (Biotin) standard curve image

Direct ELISA: ARG56819 anti-PLGF1 antibody (Biotin) at 0.25 - 1.0 µg/ml results of a typical standard run with optical density.



ARG56819 anti-PLGF1 antibody (Biotin) standard curve image

Sandwich ELISA: ARG56819 anti-PLGF1 antibody (Biotin) as a detection antibody at 0.25 - 1.0 µg/ml combined with ARG56710 anti-PLGF1 antibody as a capture antibody. Results of a typical standard run with optical density.