

## ARG56816 anti-BD1 / beta Defensin 1 antibody (Biotin)

Package: 50 µg  
Store at: 4°C

### Summary

Product Description	Biotin-conjugated Rabbit Polyclonal antibody recognizes BD1 / beta Defensin 1
Tested Reactivity	Hu
Tested Application	ELISA, WB
Host	Rabbit
Clonality	Polyclonal
Isotype	IgG
Target Name	BD1 / beta Defensin 1
Species	Human
Immunogen	E.coli derived Recombinant Human BD-1 (47 aa). (GNFLTGLGHR SDHYNCVSSG GQCLYSACPI FTKIQGTCYR GKAKCCK)
Conjugation	Biotin
Alternate Names	DEFB-1; Defensin, beta 1; HBD1; hBD-1; BD1; Beta-defensin 1; DEFB101; BD-1

### Application Instructions

Application table	Application	Dilution
	ELISA	Direct: 0.25 - 1.0 µg/ml Sandwich: 0.25 - 1.0 µg/ml with ARG56707 as a capture antibody
	WB	0.1 - 0.2 µg/ml
Application Note	* The dilutions indicate recommended starting dilutions and the optimal dilutions or concentrations should be determined by the scientist.	

### Properties

Form	Liquid
Purification	Purified by affinity chromatography.
Buffer	PBS (pH 7.2)
Concentration	1 mg/ml
Storage instruction	Aliquot and store in the dark at 2-8°C. Keep protected from prolonged exposure to light. Avoid repeated freeze/thaw cycles. Suggest spin the vial prior to opening. The antibody solution should be gently mixed before use.
Note	For laboratory research only, not for drug, diagnostic or other use.

### Bioinformation

Database links [GeneID: 1672 Human](#)  
[Swiss-port # P60022 Human](#)

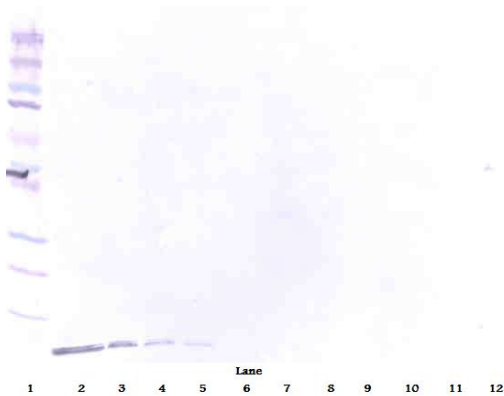
Gene Symbol DEFB1  
Gene Full Name defensin, beta 1

Background Defensins form a family of microbicidal and cytotoxic peptides made by neutrophils. Members of the defensin family are highly similar in protein sequence. Beta Defensin 1 is an antimicrobial peptide implicated in the resistance of epithelial surfaces to microbial colonization. This gene maps in close proximity to defensin family member, defensin, alpha 1 and has been implicated in the pathogenesis of cystic fibrosis. [provided by RefSeq, Jul 2008]

Function Beta Defensin 1 has bactericidal activity. May act as a ligand for C-C chemokine receptor CCR6. Positively regulates the sperm motility and bactericidal activity in a CCR6-dependent manner. Binds to CCR6 and triggers Ca2+ mobilization in the sperm which is important for its motility (PubMed:25122636). [UniProt]

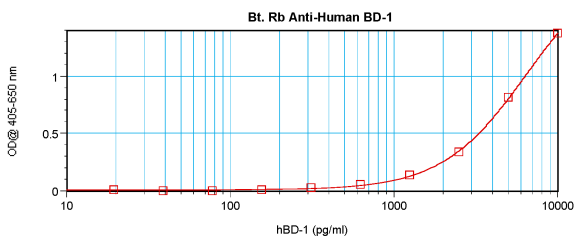
Calculated Mw 7 kDa

Images



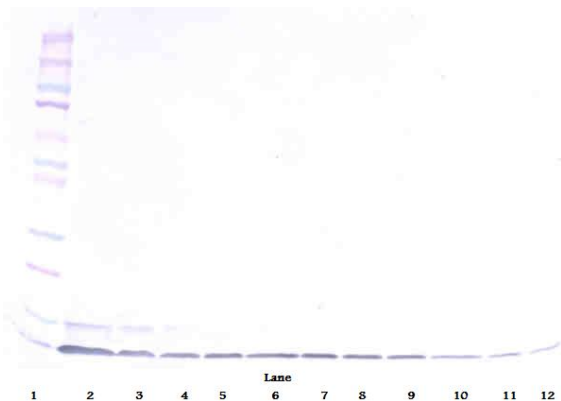
ARG56816 anti-BD1 / beta Defensin 1 antibody (Biotin) WB image

Western blot: 250 - 0.24 ng of Human BD-1 stained with ARG56816 anti-BD1 / beta Defensin 1 antibody (Biotin), under reducing conditions.



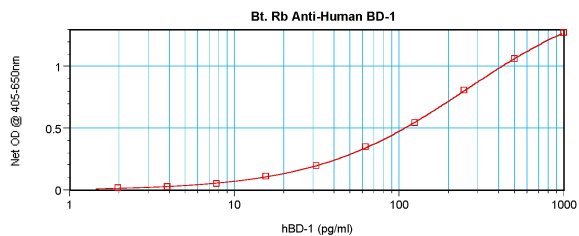
ARG56816 anti-BD1 / beta Defensin 1 antibody (Biotin) standard curve image

Direct ELISA: ARG56816 anti-BD1 / beta Defensin 1 antibody (Biotin) at 0.25 - 1.0 µg/ml results of a typical standard run with optical density.



ARG56816 anti-BD1 / beta Defensin 1 antibody (Biotin) WB image

Western blot: 250 - 0.24 ng of Human BD-1 stained with ARG56816 anti-BD1 / beta Defensin 1 antibody (Biotin), under non-reducing conditions.



ARG56816 anti-BD1 / beta Defensin 1 antibody (Biotin) standard curve image

Sandwich ELISA: ARG56816 anti-BD1 / beta Defensin 1 antibody (Biotin) as a detection antibody at 0.25 - 1.0  $\mu\text{g/ml}$  combined with ARG56707 anti-BD-1 / beta Defensin-1 antibody as a capture antibody. Results of a typical standard run with optical density.