

## ARG56801 anti-GM-CSF antibody (Biotin)

Package: 50 µg  
Store at: 4°C

### Summary

Product Description	Biotin-conjugated Rabbit Polyclonal antibody recognizes GM-CSF
Tested Reactivity	Rat
Tested Application	ELISA, WB
Host	Rabbit
Clonality	Polyclonal
Isotype	IgG
Target Name	GM-CSF
Species	Rat
Immunogen	E.coli derived Recombinant Rat GM-CSF. (MAPTRSPNPV TRPWKHVDI KEALSLNDM RALENEKNE VDIISNEFSI QRPTCVQTRL KLYKQGLRGN LTKLNGALTM IASHYQTNC PTPETDCEIE VTTFEDFIKN LKGLFDIPF DCWKPVQK)
Conjugation	Biotin
Alternate Names	GM-CSF; Granulocyte-macrophage colony-stimulating factor; CSF; GMCSF; Molgramostin; Colony-stimulating factor; Sargramostim

### Application Instructions

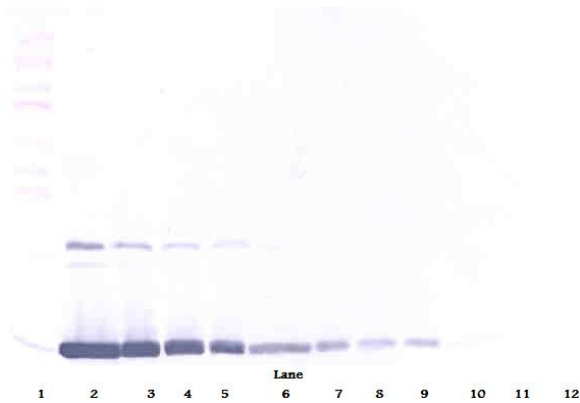
Application table	Application	Dilution
	ELISA	Direct: ~ 1.0 µg/ml Sandwich: 0.25 - 1.0 µg/ml with ARG56692 as a capture antibody
	WB	0.1 - 0.2 µg/ml
Application Note	* The dilutions indicate recommended starting dilutions and the optimal dilutions or concentrations should be determined by the scientist.	

### Properties

Form	Liquid
Purification	Purified by affinity chromatography.
Buffer	PBS (pH 7.2)
Concentration	1 mg/ml
Storage instruction	Aliquot and store in the dark at 2-8°C. Keep protected from prolonged exposure to light. Avoid repeated freeze/thaw cycles. Suggest spin the vial prior to opening. The antibody solution should be gently mixed before use.
Note	For laboratory research only, not for drug, diagnostic or other use.

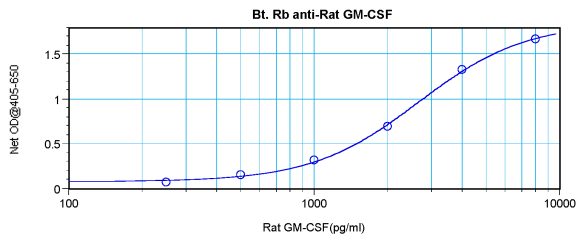
Database links	<a href="#">GeneID: 116630 Rat</a> <a href="#">Swiss-port # P48750 Rat</a>
Gene Symbol	Csf2
Gene Full Name	colony stimulating factor 2 (granulocyte-macrophage)
Background	The protein encoded by this gene is a cytokine that controls the production, differentiation, and function of granulocytes and macrophages. The active form of the protein is found extracellularly as a homodimer. This gene has been localized to a cluster of related genes at chromosome region 5q31, which is known to be associated with interstitial deletions in the 5q- syndrome and acute myelogenous leukemia. Other genes in the cluster include those encoding interleukins 4, 5, and 13. [provided by RefSeq, Jul 2008]
Function	Cytokine that stimulates the growth and differentiation of hematopoietic precursor cells from various lineages, including granulocytes, macrophages, eosinophils and erythrocytes. [UniProt]
Highlight	Related products: <a href="#">GM-CSF antibodies</a> ; <a href="#">GM-CSF ELISA Kits</a> ; <a href="#">GM-CSF Duos / Panels</a> ; <a href="#">GM-CSF recombinant proteins</a> ; <a href="#">Anti-Rabbit IgG secondary antibodies</a> ; Related news: <a href="#">HMGB1 in inflammation</a> <a href="#">Inflammatory Cytokines</a>
Calculated Mw	16 kDa

Images



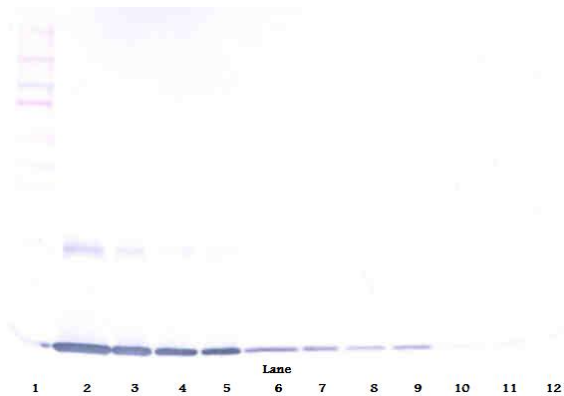
ARG56801 anti-GM-CSF antibody (Biotin) WB image

Western blot: 250 - 0.24 ng of Rat GM-CSF stained with ARG56801 anti-GM-CSF antibody (Biotin), under reducing conditions.



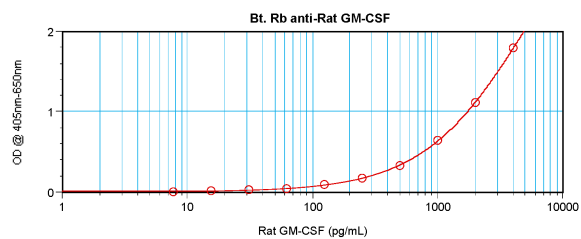
ARG56801 anti-GM-CSF antibody (Biotin) standard curve image

Direct ELISA: ARG56801 anti-GM-CSF antibody (Biotin) at ~ 1.0 µg/ml results of a typical standard run with optical density.



ARG56801 anti-GM-CSF antibody (Biotin) WB image

Western blot: 250 - 0.24 ng of Rat GM-CSF stained with ARG56801 anti-GM-CSF antibody (Biotin), under non-reducing conditions.



ARG56801 anti-GM-CSF antibody (Biotin) standard curve image

Sandwich ELISA: ARG56801 anti-GM-CSF antibody (Biotin) as a detection antibody at 0.25 - 1.0 µg/ml combined with ARG56692 anti-GM-CSF antibody as a capture antibody. Results of a typical standard run with optical density.