

ARG56798 anti-GDNF antibody (Biotin)

Package: 50 µg
Store at: 4°C

Summary

Product Description	Biotin-conjugated Rabbit Polyclonal antibody recognizes GDNF
Tested Reactivity	Hu
Tested Application	ELISA, WB
Host	Rabbit
Clonality	Polyclonal
Isotype	IgG
Target Name	GDNF
Species	Human
Immunogen	E.coli derived Recombinant Human GDNF. (MSPDKQMAVL PRRERNRQAA AANPENSRGK GRRGQRGKNR GCVLTAIHLN VTDLGLGYET KEELIFRYCS GSCDAAETTY DKILKNLSRN RRLVSDKVGQ ACCRPIAFDD DLSFLDDNLV YHILRKHS AK RCGCI)
Conjugation	Biotin
Alternate Names	ATF; Astrocyte-derived trophic factor; HSCR3; hGDNF; Glial cell line-derived neurotrophic factor; HFB1-GDNF; ATF1; ATF2

Application Instructions

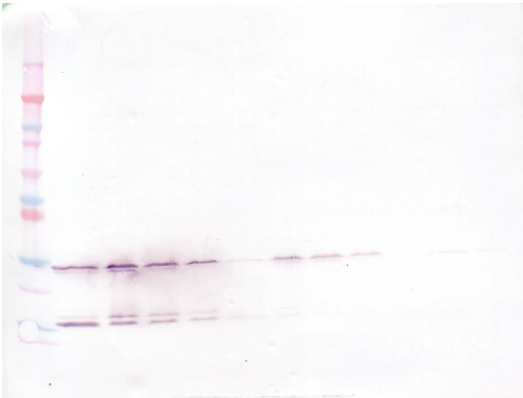
Application table	Application	Dilution
	ELISA	Direct: 0.25 - 1.0 µg/ml Sandwich: 0.25 - 1.0 µg/ml with ARG56689 as a capture antibody
	WB	0.1 - 0.2 µg/ml
Application Note	* The dilutions indicate recommended starting dilutions and the optimal dilutions or concentrations should be determined by the scientist.	

Properties

Form	Liquid
Purification	Purified by affinity chromatography.
Buffer	PBS (pH 7.2)
Concentration	1 mg/ml
Storage instruction	Aliquot and store in the dark at 2-8°C. Keep protected from prolonged exposure to light. Avoid repeated freeze/thaw cycles. Suggest spin the vial prior to opening. The antibody solution should be gently mixed before use.
Note	For laboratory research only, not for drug, diagnostic or other use.

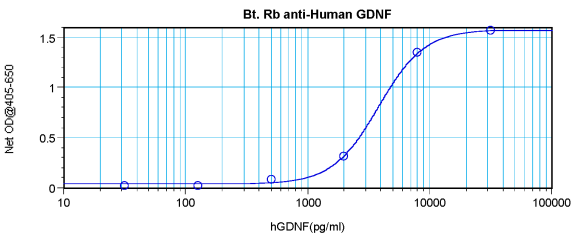
Database links	GeneID: 2668 Human Swiss-port # P39905 Human
Gene Symbol	GNDF
Gene Full Name	glial cell derived neurotrophic factor
Background	This gene encodes a highly conserved neurotrophic factor. The recombinant form of this protein was shown to promote the survival and differentiation of dopaminergic neurons in culture, and was able to prevent apoptosis of motor neurons induced by axotomy. The encoded protein is processed to a mature secreted form that exists as a homodimer. The mature form of the protein is a ligand for the product of the RET (rearranged during transfection) protooncogene. Multiple transcript variants encoding different isoforms have been found for this gene. Mutations in this gene may be associated with Hirschsprung disease. [provided by RefSeq, Jun 2010]
Function	Neurotrophic factor that enhances survival and morphological differentiation of dopaminergic neurons and increases their high-affinity dopamine uptake. [UniProt]
Calculated Mw	24 kDa

Images



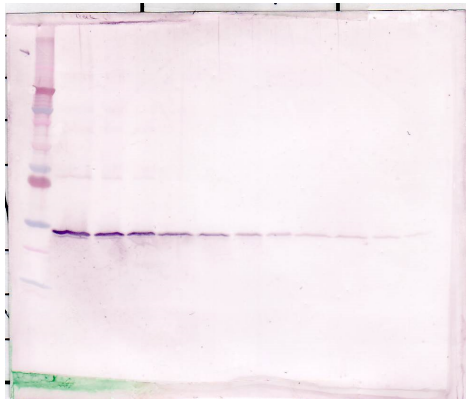
ARG56798 anti-GDNF antibody (Biotin) WB image

Western blot: 250 - 0.24 ng of Human GDNF stained with ARG56798 anti-GDNF antibody (Biotin), under reducing conditions.



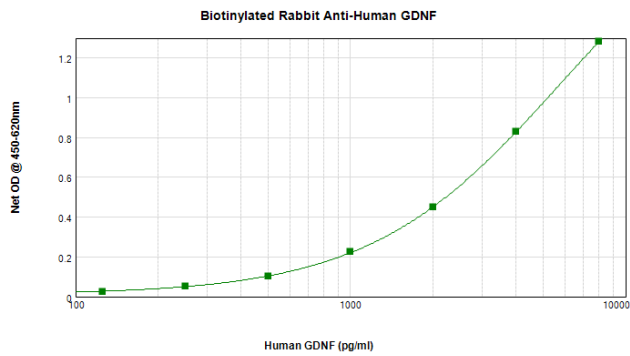
ARG56798 anti-GDNF antibody (Biotin) standard curve image

Direct ELISA: ARG56798 anti-GDNF antibody (Biotin) at 0.25 - 1.0 µg/ml results of a typical standard run with optical density.



ARG56798 anti-GDNF antibody (Biotin) WB image

Western blot: 250 - 0.24 ng of Human GDNF stained with ARG56798 anti-GDNF antibody (Biotin), under non-reducing conditions.



ARG56798 anti-GDNF antibody (Biotin) standard curve image

Sandwich ELISA: ARG56798 anti-GDNF antibody (Biotin) as a detection antibody at 0.25 - 1.0 $\mu\text{g/ml}$ combined with ARG56689 anti-GDNF antibody as a capture antibody. Results of a typical standard run with optical density.