

## ARG56776 anti-IL1 alpha antibody (Biotin)

Package: 50 µg  
Store at: 4°C

### Summary

Product Description	Biotin-conjugated Rabbit Polyclonal antibody recognizes IL1 alpha
Tested Reactivity	Hu
Tested Application	ELISA, WB
Host	Rabbit
Clonality	Polyclonal
Isotype	IgG
Target Name	IL1 alpha
Species	Human
Immunogen	E.coli derived Recombinant Human IL-1α. (SAPFSFLSNV KYNFMRIKY EFILNDALNQ SIIRANDQYL TAAALHNLDE AVKFDMGAYK SSKDDAKITV ILRISKTLQY VTAQDEDQPV LLKEMPEIPK TITGSETNLL FFWETHGTKN YFTSVAHPNL FIATKQDYWV CLAGGPPSIT DFQILENQA)
Conjugation	Biotin
Alternate Names	IL-1 alpha; Interleukin-1 alpha; IL1; IL1F1; Hematopoietin-1; IL1-ALPHA; IL-1A

### Application Instructions

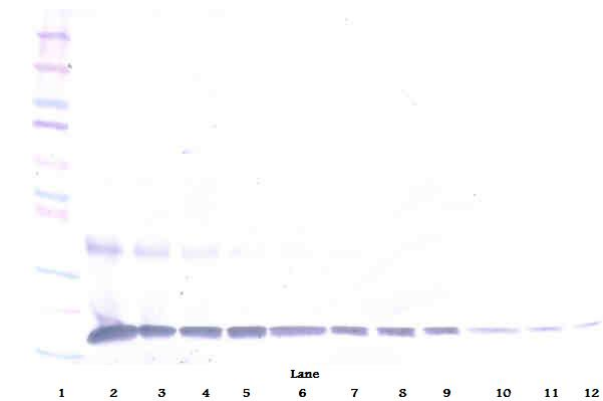
Application table	Application	Dilution
	ELISA	Direct: 0.25 - 1.0 µg/ml Sandwich: 0.25 - 1.0 µg/ml with ARG56666 as a capture antibody
	WB	0.1 - 0.2 µg/ml
Application Note	* The dilutions indicate recommended starting dilutions and the optimal dilutions or concentrations should be determined by the scientist.	

### Properties

Form	Liquid
Purification	Purified by affinity chromatography.
Buffer	PBS (pH 7.2)
Concentration	1 mg/ml
Storage instruction	Aliquot and store in the dark at 2-8°C. Keep protected from prolonged exposure to light. Avoid repeated freeze/thaw cycles. Suggest spin the vial prior to opening. The antibody solution should be gently mixed before use.
Note	For laboratory research only, not for drug, diagnostic or other use.

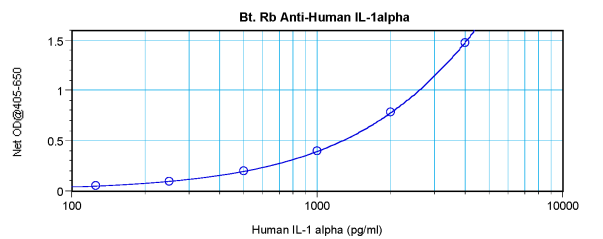
Database links	<a href="#">GeneID: 3552 Human</a> <a href="#">Swiss-port # P01583 Human</a>
Gene Symbol	IL1A
Gene Full Name	interleukin 1, alpha
Background	The protein encoded by this gene is a member of the interleukin 1 cytokine family. This cytokine is a pleiotropic cytokine involved in various immune responses, inflammatory processes, and hematopoiesis. This cytokine is produced by monocytes and macrophages as a proprotein, which is proteolytically processed and released in response to cell injury, and thus induces apoptosis. This gene and eight other interleukin 1 family genes form a cytokine gene cluster on chromosome 2. It has been suggested that the polymorphism of these genes is associated with rheumatoid arthritis and Alzheimer's disease. [provided by RefSeq, Jul 2008]
Function	Produced by activated macrophages, IL-1 stimulates thymocyte proliferation by inducing IL-2 release, B-cell maturation and proliferation, and fibroblast growth factor activity. IL-1 proteins are involved in the inflammatory response, being identified as endogenous pyrogens, and are reported to stimulate the release of prostaglandin and collagenase from synovial cells. [UniProt]
Highlight	Related products: <a href="#">IL1 alpha antibodies</a> ; <a href="#">IL1 alpha ELISA Kits</a> ; <a href="#">IL1 alpha recombinant proteins</a> ; <a href="#">Anti-Rabbit IgG secondary antibodies</a> ; Related news: <a href="#">HMGB1 in inflammation</a> <a href="#">Inflammatory Cytokines</a>
Calculated Mw	31 kDa

Images



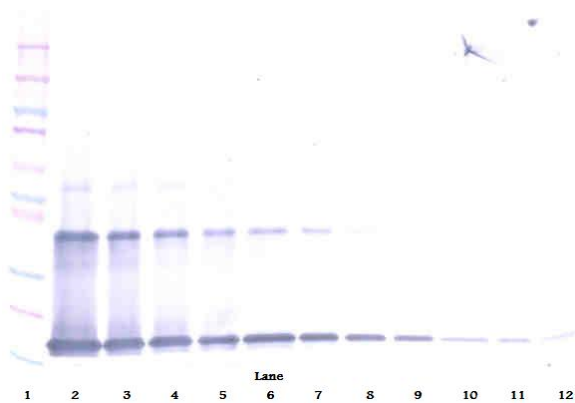
ARG56776 anti-IL1 alpha antibody (Biotin) WB image

Western blot: 250 - 0.24 ng of Human IL-1 $\alpha$  stained with ARG56776 anti-IL1 alpha antibody (Biotin), under reducing conditions.



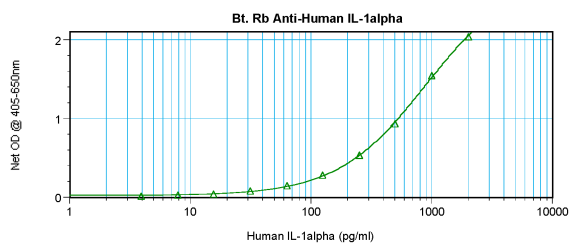
ARG56776 anti-IL1 alpha antibody (Biotin) standard curve image

Direct ELISA: ARG56776 anti-IL1 alpha antibody (Biotin) at 0.25 - 1.0  $\mu$ g/ml results of a typical standard run with optical density.



ARG56776 anti-IL1 alpha antibody (Biotin) WB image

Western blot: 250 - 0.24 ng of Human IL-1α stained with ARG56776 anti-IL1 alpha antibody (Biotin), under non-reducing conditions.



ARG56776 anti-IL1 alpha antibody (Biotin) standard curve image

Sandwich ELISA: ARG56776 anti-IL1 alpha antibody (Biotin) as a detection antibody at 0.25 - 1.0 µg/ml combined with ARG56666 anti-IL1 alpha antibody as a capture antibody. Results of a typical standard run with optical density.