

ARG56774 anti-IGF1 antibody (Biotin)

Package: 50 µg
Store at: 4°C

Summary

| | |
|---------------------|-------------------------------------------------------------------------------------------------------------------------|
| Product Description | Biotin-conjugated Rabbit Polyclonal antibody recognizes IGF1 |
| Tested Reactivity | Hu |
| Tested Application | ELISA, WB |
| Host | Rabbit |
| Clonality | Polyclonal |
| Isotype | IgG |
| Target Name | IGF1 |
| Species | Human |
| Immunogen | E.coli derived Recombinant Human IGF1. (GPETLCGAEL VDALQFVCGD RGFYFNKPTG YGSSRRAPQ TGIVDECCFR SCDLRRLEMY CAPLKPAKSA) |
| Conjugation | Biotin |
| Alternate Names | MGF; Insulin-like growth factor I; Mechano growth factor; Somatomedin-C; IGF-I; IGF-I |

Application Instructions

| Application table | Application | Dilution |
|-------------------|--------------------------------------------------------------------------------------------------------------------------------------------|--------------------------------------------------------------------------------------------|
| | ELISA | Direct: 0.25 - 1.0 µg/ml Sandwich: 0.25 - 1.0 µg/ml with ARG56664 as a capture antibody |
| | WB | 0.1 - 0.2 µg/ml |
| Application Note | * The dilutions indicate recommended starting dilutions and the optimal dilutions or concentrations should be determined by the scientist. | |

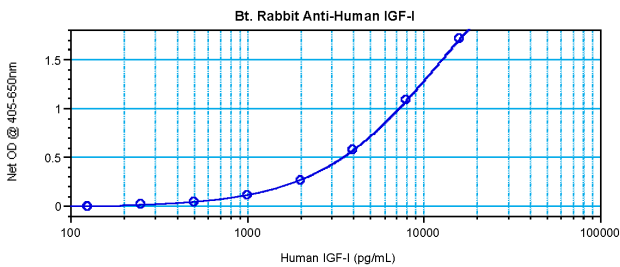
Properties

| | |
|---------------------|------------------------------------------------------------------------------------------------------------------------------------------------------------------------------------------------------------------------------|
| Form | Liquid |
| Purification | Purified by affinity chromatography. |
| Buffer | PBS (pH 7.2) |
| Concentration | 1 mg/ml |
| Storage instruction | Aliquot and store in the dark at 2-8°C. Keep protected from prolonged exposure to light. Avoid repeated freeze/thaw cycles. Suggest spin the vial prior to opening. The antibody solution should be gently mixed before use. |
| Note | For laboratory research only, not for drug, diagnostic or other use. |

Bioinformation

| | |
|----------------|----------------------------------------------------------------------------------------------------------------------------------------------------------------------------------------------------------------------------------------------------------------------------------------------------------------------------------------------------------------------------------------------------------------------------------------------------------------------------------------------------------------------------------------------------------------------------|
| Database links | GeneID: 3479 Human Swiss-port # P05019 Human |
| Gene Symbol | IGF1 |
| Gene Full Name | insulin-like growth factor 1 (somatomedin C) |
| Background | The protein encoded by this gene is similar to insulin in function and structure and is a member of a family of proteins involved in mediating growth and development. The encoded protein is processed from a precursor, bound by a specific receptor, and secreted. Defects in this gene are a cause of insulin-like growth factor I deficiency. Alternative splicing results in multiple transcript variants encoding different isoforms that may undergo similar processing to generate mature protein. [provided by RefSeq, Sep 2015] |
| Function | The insulin-like growth factors, isolated from plasma, are structurally and functionally related to insulin but have a much higher growth-promoting activity. May be a physiological regulator of [1-14C]-2-deoxy-D-glucose (2DG) transport and glycogen synthesis in osteoblasts. Stimulates glucose transport in rat bone-derived osteoblastic (PyMS) cells and is effective at much lower concentrations than insulin, not only regarding glycogen and DNA synthesis but also with regard to enhancing glucose uptake. May play a role in synapse maturation. [UniProt] |
| Calculated Mw | 22 kDa |

Images



ARG56774 anti-IGF1 antibody (Biotin) standard curve image

Sandwich ELISA: ARG56774 anti-IGF1 antibody (Biotin) as a detection antibody at 0.25 - 1.0 µg/ml combined with ARG56664 anti-IGF1 antibody as a capture antibody. Results of a typical standard run with optical density.