

## ARG56768 anti-IL2 antibody (Biotin)

Package: 50 µg  
Store at: 4°C

### Summary

Product Description	Biotin-conjugated Rabbit Polyclonal antibody recognizes IL2
Tested Reactivity	Ms
Tested Application	ELISA, WB
Host	Rabbit
Clonality	Polyclonal
Isotype	IgG
Target Name	IL2
Species	Mouse
Immunogen	E.coli derived Recombinant Mouse IL-2. (PTSSSTSSST AEAQQQQQQ QQQQHLEQL LMDLQELLSR MENYRNKLP RMLTFKFYLP KQATELKDQ CLEDELGPLR HVLDLTQSKS FQLEDAENFI SNIRVTVVKL KGSDNTFECQ FDDESATVVD FLRRWIAFCQ SIISTSPQ)
Conjugation	Biotin
Alternate Names	TCGF; IL-2; lymphokine; Interleukin-2; Aldesleukin; T-cell growth factor

### Application Instructions

Application table	Application	Dilution
	ELISA	Direct: 0.25 - 1.0 µg/ml Sandwich: 0.25 - 1.0 µg/ml with ARG56657 as a capture antibody
	WB	0.1 - 0.2 µg/ml
Application Note	* The dilutions indicate recommended starting dilutions and the optimal dilutions or concentrations should be determined by the scientist.	

### Properties

Form	Liquid
Purification	Purified by affinity chromatography.
Buffer	PBS (pH 7.2)
Concentration	1 mg/ml
Storage instruction	Aliquot and store in the dark at 2-8°C. Keep protected from prolonged exposure to light. Avoid repeated freeze/thaw cycles. Suggest spin the vial prior to opening. The antibody solution should be gently mixed before use.
Note	For laboratory research only, not for drug, diagnostic or other use.

### Bioinformation

Database links

[GeneID: 16183 Mouse](#)  
[Swiss-port # P04351 Mouse](#)

Gene Symbol

IL2

Gene Full Name

interleukin 2

Background

The protein encoded by this gene is a secreted cytokine that is important for the proliferation of T and B lymphocytes. The receptor of this cytokine is a heterotrimeric protein complex whose gamma chain is also shared by interleukin 4 (IL4) and interleukin 7 (IL7). The expression of this gene in mature thymocytes is monoallelic, which represents an unusual regulatory mode for controlling the precise expression of a single gene. The targeted disruption of a similar gene in mice leads to ulcerative colitis-like disease, which suggests an essential role of this gene in the immune response to antigenic stimuli. [provided by RefSeq, Jul 2008]

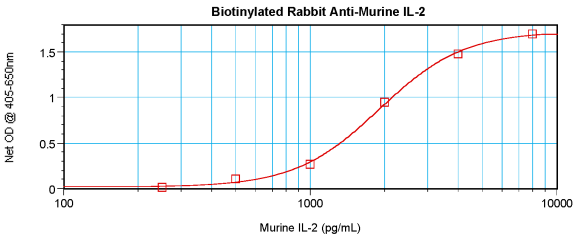
Function

Produced by T-cells in response to antigenic or mitogenic stimulation, this protein is required for T-cell proliferation and other activities crucial to regulation of the immune response. Can stimulate B-cells, monocytes, lymphokine-activated killer cells, natural killer cells, and glioma cells. [UniProt]

Calculated Mw

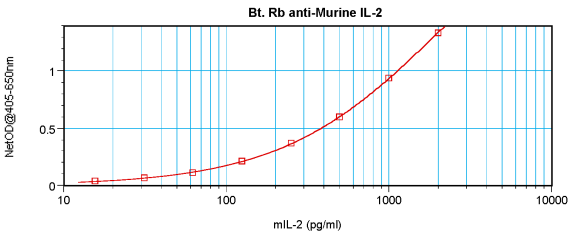
18 kDa

Images



ARG56768 anti-IL2 antibody (Biotin) standard curve image

Direct ELISA: ARG56768 anti-IL2 antibody (Biotin) at 0.25 - 1.0 µg/ml results of a typical standard run with optical density.



ARG56768 anti-IL2 antibody (Biotin) standard curve image

Sandwich ELISA: ARG56768 anti-IL2 antibody (Biotin) as a detection antibody at 0.25 - 1.0 µg/ml combined with ARG56657 anti-IL2 antibody as a capture antibody. Results of a typical standard run with optical density.