

ARG56751 anti-RELM alpha antibody (Biotin)

Package: 50 µg
Store at: 4°C

Summary

| | |
|---------------------|---|
| Product Description | Biotin-conjugated Rabbit Polyclonal antibody recognizes RELM alpha |
| Tested Reactivity | Hu, Ms |
| Tested Application | ELISA, WB |
| Host | Rabbit |
| Clonality | Polyclonal |
| Isotype | IgG |
| Target Name | RELM alpha |
| Species | Mouse |
| Immunogen | E.coli derived Recombinant Mouse RELMα. (MDETIEIIVE NKVKELLANP ANYPSTVTKT LSCTSVKTMN RWASCPAGMT ATGCACGFAC GSWEIQSGDT CNCLCLLDVW TTARCCQLS) |
| Conjugation | Biotin |
| Alternate Names | Fizz-1; Xcp2; RELM-alpha; Parasite-induced macrophage novel gene 1 protein; Hypoxia-induced mitogenic factor; RELMa; RELMalpha; Resistin-like alpha; HIMF; Cysteine-rich secreted protein A12-gamma; Cysteine-rich secreted protein FIZZ1; 1810019L16Rik; Fizz1 |

Application Instructions

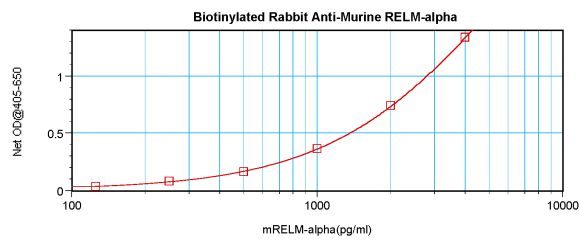
| Application table | Application | Dilution |
|-------------------|--|--|
| | ELISA | Direct: 0.25 - 1.0 µg/ml Sandwich: 0.25 - 1.0 µg/ml with ARG56641 as a capture antibody |
| | WB | 0.1 - 0.2 µg/ml |
| Application Note | * The dilutions indicate recommended starting dilutions and the optimal dilutions or concentrations should be determined by the scientist. | |

Properties

| | |
|---------------------|--|
| Form | Liquid |
| Purification | Purified by affinity chromatography. |
| Buffer | PBS (pH 7.2) |
| Concentration | 1 mg/ml |
| Storage instruction | Aliquot and store in the dark at 2-8°C. Keep protected from prolonged exposure to light. Avoid repeated freeze/thaw cycles. Suggest spin the vial prior to opening. The antibody solution should be gently mixed before use. |
| Note | For laboratory research only, not for drug, diagnostic or other use. |

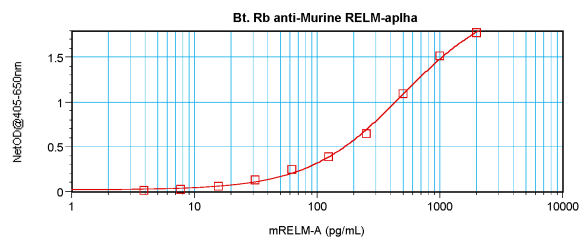
| | |
|----------------|--|
| Database links | GeneID: 57262 Mouse Swiss-port # Q9EP95 Mouse |
| Gene Symbol | Retnla |
| Gene Full Name | resistin like alpha |
| Function | Probable hormone. Plays a role in pulmonary vascular remodeling. [UniProt] |
| Calculated Mw | 12 kDa |

Images



ARG56751 anti-RELM alpha antibody (Biotin) standard curve image

Direct ELISA: ARG56751 anti-RELM alpha antibody (Biotin) at 0.25 - 1.0 µg/ml results of a typical standard run with optical density.



ARG56751 anti-RELM alpha antibody (Biotin) standard curve image

Sandwich ELISA: ARG56751 anti-RELM alpha antibody (Biotin) as a detection antibody at 0.25 - 1.0 µg/ml combined with ARG56641 anti-RELM alpha antibody as a capture antibody. Results of a typical standard run with optical density.