

ARG56710 anti-PLGF1 antibody

Package: 50 µg
Store at: -20°C

Summary

Product Description	Rabbit Polyclonal antibody recognizes PLGF1
Tested Reactivity	Hu
Tested Application	ELISA, IHC-P, WB
Host	Rabbit
Clonality	Polyclonal
Isotype	IgG
Target Name	PLGF1
Species	Human
Immunogen	E.coli derived Recombinant Human PIGF-1. (MLPAVPPQQW ALSAGNGSSE VEVVPFQEVW GRSYCRALER LVDVVSEYPS EVEHMFSPSC VSLLRCTGCC GDENLHCVPV ETANVTMQLL KIRSGDRPSY VELTFSQHVR CECRPLREKM KPERCGDAVP RR)
Conjugation	Un-conjugated
Alternate Names	PGFL; PIGF; PIGF-2; SHGC-10760; Placenta growth factor; D12S1900; PLGF

Application Instructions

Application table	Application	Dilution
	ELISA	Sandwich: 0.5 - 2.0 µg/ml with ARG56819 as a detection antibody
	IHC-P	2.0 µg/ml
	WB	0.1 - 0.2 µg/ml
Application Note	* The dilutions indicate recommended starting dilutions and the optimal dilutions or concentrations should be determined by the scientist.	

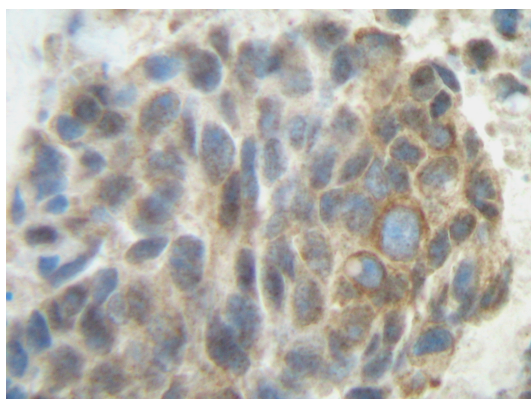
Properties

Form	Liquid
Purification	Affinity purification with immunogen.
Buffer	PBS (pH 7.2)
Concentration	1 mg/ml
Storage instruction	For continuous use, store undiluted antibody at 2-8°C for up to a week. For long-term storage, aliquot and store at -20°C or below. Storage in frost free freezers is not recommended. Avoid repeated freeze/thaw cycles. Suggest spin the vial prior to opening. The antibody solution should be gently mixed before use.
Note	For laboratory research only, not for drug, diagnostic or other use.

Bioinformation

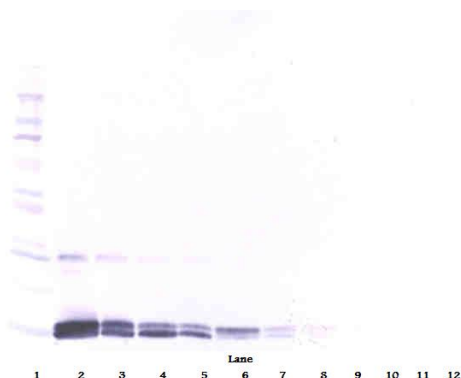
Database links	GeneID: 5228 Human Swiss-port # P49763 Human
Gene Symbol	PGF
Gene Full Name	placental growth factor
Background	This gene encodes a growth factor found in placenta which is homologous to vascular endothelial growth factor. Alternatively spliced transcripts encoding different isoforms have been found for this gene.[provided by RefSeq, Jun 2011]
Function	Growth factor active in angiogenesis and endothelial cell growth, stimulating their proliferation and migration. It binds to the receptor FLT1/VEGFR-1. Isoform PLGF-2 binds NRP1/neuropilin-1 and NRP2/neuropilin-2 in a heparin-dependent manner. Also promotes cell tumor growth. [UniProt]
Highlight	Related products: PLGF1 antibodies ; Anti-Rabbit IgG secondary antibodies ; Related news: The role of HDGF in tumor angiogenesis
Calculated Mw	25 kDa
PTM	N-glycosylated.

Images



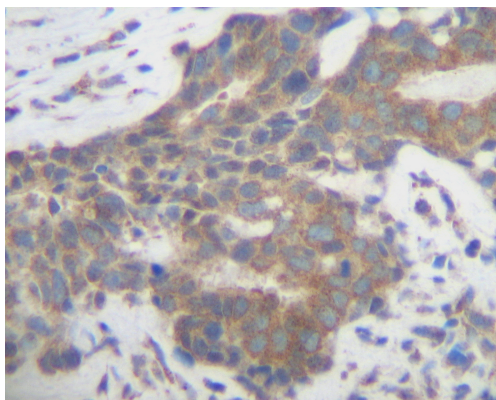
ARG56710 anti-PLGF1 antibody IHC-P image

Immunohistochemistry: Formalin-fixed and paraffin-embedded sections of Human breast invasive ductal carcinoma. The recommended ARG56710 anti-PLGF1 antibody concentration is 2.0 µg/ml with an overnight incubation at 4°C. An HRP-labeled polymer detection system was used with a DAB chromogen. Antigen Retrieval: Boil tissue section in Sodium Citrate buffer (pH 6.0) followed by cooling at RT for 20 min.



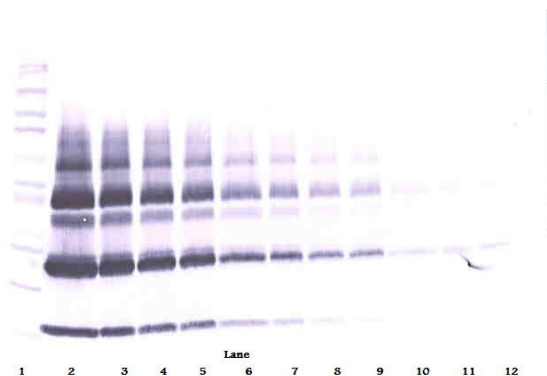
ARG56710 anti-PLGF1 antibody WB image

Western blot: 250 - 0.24 ng of Human PLGF stained with ARG56710 anti-PLGF1 antibody, under reducing conditions.



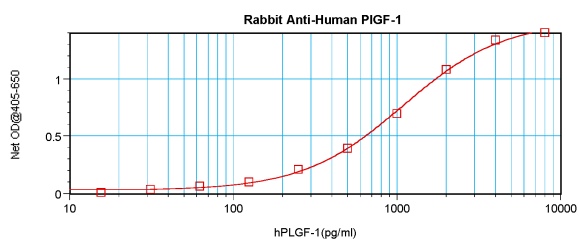
ARG56710 anti-PLGF1 antibody IHC-P image

Immunohistochemistry: Formalin-fixed and paraffin-embedded sections of Human breast invasive ductal carcinoma. The recommended ARG56710 anti-PLGF1 antibody concentration is 2.0 µg/ml with an overnight incubation at 4°C. An HRP-labeled polymer detection system was used with a DAB chromogen. Antigen Retrieval: Boil tissue section in Sodium Citrate buffer (pH 6.0) followed by cooling at RT for 20 min.



ARG56710 anti-PLGF1 antibody WB image

Western blot: 250 - 0.24 ng of Human PLGF stained with ARG56710 anti-PLGF1 antibody, under non-reducing conditions.



ARG56710 anti-PLGF1 antibody standard curve image

Sandwich ELISA: ARG56710 anti-PLGF1 antibody as a capture antibody at 0.5 - 2.0 µg/ml combined with ARG56819 anti-PLGF1 antibody (Biotin) as a detection antibody. Results of a typical standard run with optical density.