

ARG56691 anti-GM-CSF antibody

Package: 50 µg
Store at: -20°C

Summary

Product Description	Rabbit Polyclonal antibody recognizes GM-CSF
Tested Reactivity	Ms
Tested Application	ELISA, Neut, WB
Host	Rabbit
Clonality	Polyclonal
Isotype	IgG
Target Name	GM-CSF
Species	Mouse
Immunogen	E.coli derived Recombinant Mouse GM-CSF. (MAPTRSPITV TRPWKHVEAI KEALNLLDDM PVTLNREEV VSNEFSFKKL TCVQTRLKIF EQGLRGNFTK LKGALNMTAS YYQTYCPPTP ETDCEQVTT YADFIDSLKT FLTDIPFECK KPVQK)
Conjugation	Un-conjugated
Alternate Names	GM-CSF; Granulocyte-macrophage colony-stimulating factor; CSF; GMCSF; Molgramostin; Colony-stimulating factor; Sargramostim

Application Instructions

Application table	Application	Dilution
	ELISA	Sandwich: 0.5 - 2.0 µg/ml with ARG56799 as a detection antibody
	Neut	0.012 - 0.020 µg/ml (To yield [ND50] of the biological activity of mGM - CSF (0.60 ng/ml))
	WB	0.1 - 0.2 µg/ml
Application Note	* The dilutions indicate recommended starting dilutions and the optimal dilutions or concentrations should be determined by the scientist.	

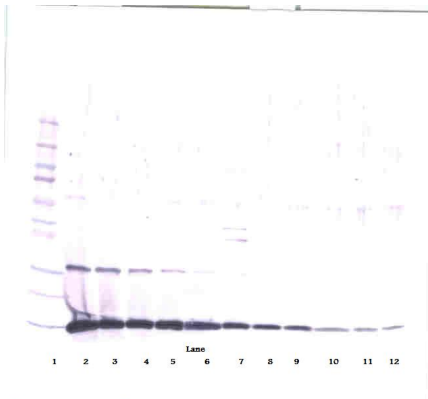
Properties

Form	Liquid
Purification	Affinity purification with immunogen.
Buffer	PBS (pH 7.2)
Concentration	1 mg/ml
Storage instruction	For continuous use, store undiluted antibody at 2-8°C for up to a week. For long-term storage, aliquot and store at -20°C or below. Storage in frost free freezers is not recommended. Avoid repeated freeze/thaw cycles. Suggest spin the vial prior to opening. The antibody solution should be gently mixed before use.
Note	For laboratory research only, not for drug, diagnostic or other use.

Bioinformation

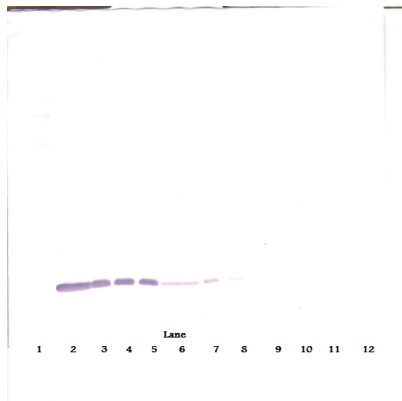
Database links	GeneID: 12981 Mouse Swiss-port # P01587 Mouse
Gene Symbol	Csf2
Gene Full Name	colony stimulating factor 2 (granulocyte-macrophage)
Background	The protein encoded by this gene is a cytokine that controls the production, differentiation, and function of granulocytes and macrophages. The active form of the protein is found extracellularly as a homodimer. This gene has been localized to a cluster of related genes at chromosome region 5q31, which is known to be associated with interstitial deletions in the 5q- syndrome and acute myelogenous leukemia. Other genes in the cluster include those encoding interleukins 4, 5, and 13. [provided by RefSeq, Jul 2008]
Function	Cytokine that stimulates the growth and differentiation of hematopoietic precursor cells from various lineages, including granulocytes, macrophages, eosinophils and erythrocytes. [UniProt]
Highlight	Related products: GM-CSF antibodies ; GM-CSF ELISA Kits ; GM-CSF Duos / Panels ; GM-CSF recombinant proteins ; Anti-Rabbit IgG secondary antibodies ; Related news: HMGB1 in inflammation Inflammatory Cytokines
Calculated Mw	16 kDa

Images



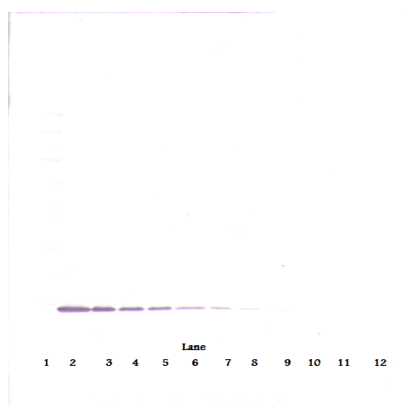
ARG56691 anti-GM-CSF antibody WB image

Western blot: 250 - 0.24 ng of Mouse GM-CSF stained with ARG56691 anti-GM-CSF antibody, under reducing conditions.



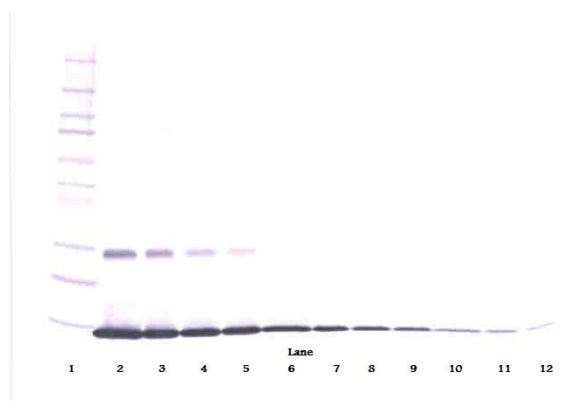
ARG56691 anti-GM-CSF antibody WB image

Western blot: 250 - 0.24 ng of Mouse GM-CSF stained with ARG56691 anti-GM-CSF antibody, under reducing conditions.



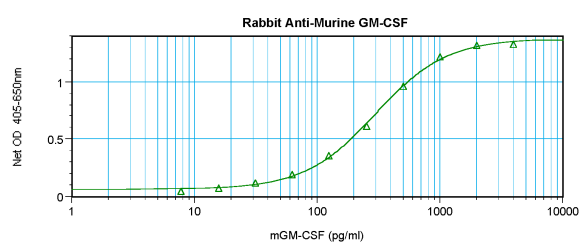
ARG56691 anti-GM-CSF antibody WB image

Western blot: 250 - 0.24 ng of Mouse GM-CSF stained with ARG56691 anti-GM-CSF antibody, under non-reducing conditions.



ARG56691 anti-GM-CSF antibody WB image

Western blot: 250 - 0.24 ng of Mouse GM-CSF stained with ARG56691 anti-GM-CSF antibody, under non-reducing conditions.



ARG56691 anti-GM-CSF antibody standard curve image

Sandwich ELISA: ARG56691 anti-GM-CSF antibody as a capture antibody at 0.5 - 2.0 $\mu\text{g}/\text{ml}$ combined with ARG56799 anti-GM-CSF antibody (Biotin) as a detection antibody. Results of a typical standard run with optical density.