

## ARG56689 anti-GDNF antibody

Package: 50 µg  
Store at: -20°C

### Summary

Product Description	Rabbit Polyclonal antibody recognizes GDNF
Tested Reactivity	Hu, Rat
Tested Application	ELISA, WB
Host	Rabbit
Clonality	Polyclonal
Isotype	IgG
Target Name	GDNF
Species	Human
Immunogen	E.coli derived Recombinant Human GDNF. (MSPDKQMAVL PRRERNRQAA AANPENSRGK GRRGQRGKNR GCVLTAIHLN VTDLGLGYET KEELIFRYCS GSCDAAETTY DKILKNLSRN RRLVSDKVGQ ACCRPIAFDD DLSFLDDNLV YHILRKHS AK RCGCI)
Conjugation	Un-conjugated
Alternate Names	ATF; Astrocyte-derived trophic factor; HSCR3; hGDNF; Glial cell line-derived neurotrophic factor; HFB1-GDNF; ATF1; ATF2

### Application Instructions

Application table	Application	Dilution
	ELISA	Sandwich: 0.5 - 2.0 µg/ml with ARG56798 as a detection antibody
	WB	0.1 - 0.2 µg/ml
Application Note	* The dilutions indicate recommended starting dilutions and the optimal dilutions or concentrations should be determined by the scientist.	

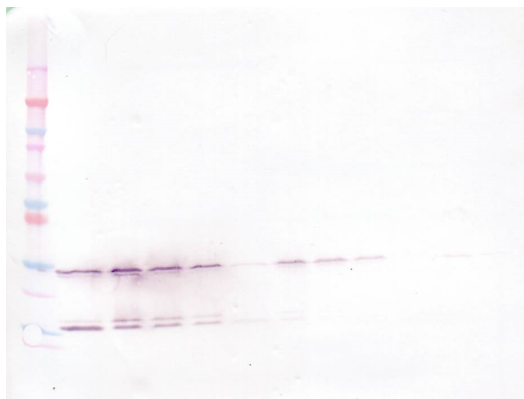
### Properties

Form	Liquid
Purification	Affinity purification with immunogen.
Buffer	PBS (pH 7.2)
Concentration	1 mg/ml
Storage instruction	For continuous use, store undiluted antibody at 2-8°C for up to a week. For long-term storage, aliquot and store at -20°C or below. Storage in frost free freezers is not recommended. Avoid repeated freeze/thaw cycles. Suggest spin the vial prior to opening. The antibody solution should be gently mixed before use.
Note	For laboratory research only, not for drug, diagnostic or other use.

## Bioinformation

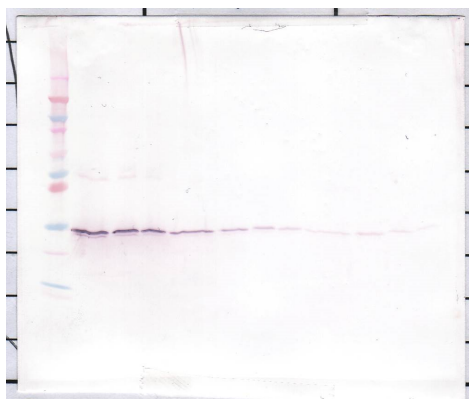
Database links	<a href="#">GeneID: 25453 Rat</a> <a href="#">GeneID: 2668 Human</a> <a href="#">Swiss-port # P39905 Human</a> <a href="#">Swiss-port # Q07731 Rat</a>
Gene Symbol	GNDF
Gene Full Name	glial cell derived neurotrophic factor
Background	This gene encodes a highly conserved neurotrophic factor. The recombinant form of this protein was shown to promote the survival and differentiation of dopaminergic neurons in culture, and was able to prevent apoptosis of motor neurons induced by axotomy. The encoded protein is processed to a mature secreted form that exists as a homodimer. The mature form of the protein is a ligand for the product of the RET (rearranged during transfection) protooncogene. Multiple transcript variants encoding different isoforms have been found for this gene. Mutations in this gene may be associated with Hirschsprung disease. [provided by RefSeq, Jun 2010]
Function	Neurotrophic factor that enhances survival and morphological differentiation of dopaminergic neurons and increases their high-affinity dopamine uptake. [UniProt]
Calculated Mw	24 kDa

## Images



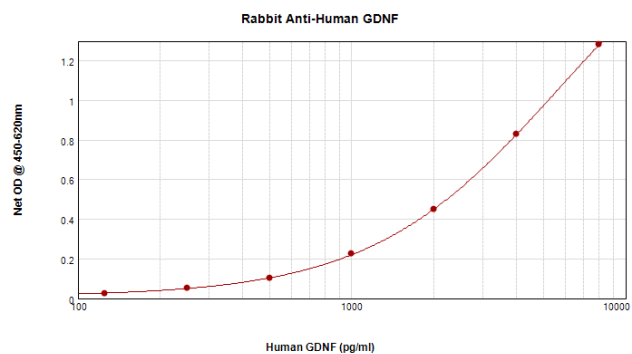
ARG56689 anti-GDNF antibody WB image

Western blot: 250 - 0.24 ng of Human GDNF stained with ARG56689 anti-GDNF antibody, under reducing conditions.



ARG56689 anti-GDNF antibody WB image

Western blot: 250 - 0.24 ng of Human GDNF stained with ARG56689 anti-GDNF antibody, under non-reducing conditions.



#### ARG56689 anti-GDNF antibody standard curve image

Sandwich ELISA: ARG56689 anti-GDNF antibody as a capture antibody at 0.5 - 2.0  $\mu\text{g}/\text{ml}$  combined with ARG56798 anti-GDNF antibody (Biotin) as a detection antibody. Results of a typical standard run with optical density.