

ARG56680 anti-IL21 antibody

Package: 50 µg
Store at: -20°C

Summary

Product Description	Rabbit Polyclonal antibody recognizes IL21
Tested Reactivity	Hu
Tested Application	ELISA, Neut, WB
Host	Rabbit
Clonality	Polyclonal
Isotype	IgG
Target Name	IL21
Species	Human
Immunogen	E.coli derived Recombinant Human IL-21. (MQDRHMIRMRLQLIDIVDQLK NYVNDLVPEF LPAPEDVETN CEWSAFSCFQ KAQLKSANTG NNERIINVS KKLKRKPPST NAGRRQKHRL TCPSCDSYEK KPPKEFLERF KSLQKMIHQ HLLSRTHGSE DS)
Conjugation	Un-conjugated
Alternate Names	Za11; IL-21; CVID11; Interleukin-21

Application Instructions

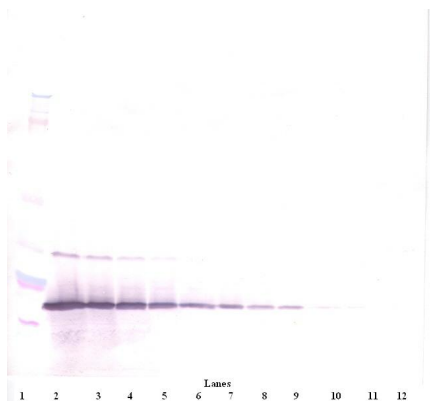
Application table	Application	Dilution
	ELISA	Sandwich: 0.5 - 2.0 µg/ml with ARG56790 as a detection antibody
	Neut	This antibody exhibits complete neutralization of the biological activity of hIL - 21 in a Human B cell stimulation assay.
	WB	0.1 - 0.2 µg/ml
Application Note	* The dilutions indicate recommended starting dilutions and the optimal dilutions or concentrations should be determined by the scientist.	

Properties

Form	Liquid
Purification	Affinity purification with immunogen.
Buffer	PBS (pH 7.2)
Concentration	1 mg/ml
Storage instruction	For continuous use, store undiluted antibody at 2-8°C for up to a week. For long-term storage, aliquot and store at -20°C or below. Storage in frost free freezers is not recommended. Avoid repeated freeze/thaw cycles. Suggest spin the vial prior to opening. The antibody solution should be gently mixed before use.
Note	For laboratory research only, not for drug, diagnostic or other use.

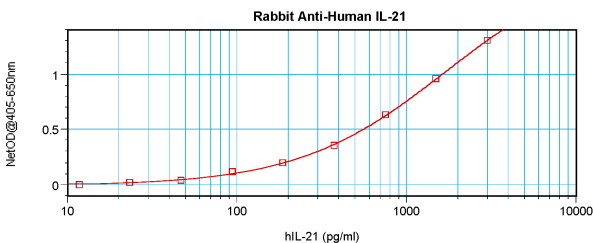
Database links	GeneID: 59067 Human Swiss-port # Q9HBE4 Human
Gene Symbol	IL21
Gene Full Name	interleukin 21
Background	This gene encodes a member of the common-gamma chain family of cytokines with immunoregulatory activity. The encoded protein plays a role in both the innate and adaptive immune responses by inducing the differentiation, proliferation and activity of multiple target cells including macrophages, natural killer cells, B cells and cytotoxic T cells. Dysregulation of this gene plays a role in multiple immune-mediated diseases including lupus, psoriasis and chronic inflammatory diseases. Alternatively spliced transcript variants encoding multiple isoforms have been observed for this gene. [provided by RefSeq, Dec 2011]
Function	Cytokine with immunoregulatory activity. May promote the transition between innate and adaptive immunity. Induces the production of IgG(1) and IgG(3) in B-cells (By similarity). May play a role in proliferation and maturation of natural killer (NK) cells in synergy with IL15. May regulate proliferation of mature B- and T-cells in response to activating stimuli. In synergy with IL15 and IL18 stimulates interferon gamma production in T-cells and NK cells. During T-cell mediated immune response may inhibit dendritic cells (DC) activation and maturation. [UniProt]
Calculated Mw	19 kDa

Images



ARG56680 anti-IL21 antibody WB image

Western blot: 250 - 0.24 ng of Human IL-21 stained with ARG56680 anti-IL21 antibody, under reducing conditions.



ARG56680 anti-IL21 antibody standard curve image

Sandwich ELISA: ARG56680 anti-IL21 antibody as a capture antibody at 0.5 - 2.0 µg/ml combined with ARG56790 anti-IL21 antibody (Biotin) as a detection antibody. Results of a typical standard run with optical density.