

ARG56671 anti-TGF alpha antibody

Package: 50 µg
Store at: -20°C

Summary

Product Description	Rabbit Polyclonal antibody recognizes TGF alpha
Tested Reactivity	Hu, Hm
Tested Application	ELISA, IHC-P, Neut, WB
Host	Rabbit
Clonality	Polyclonal
Isotype	IgG
Target Name	TGF alpha
Species	Human
Immunogen	E.coli derived Recombinant Human TGF-α. (VVSHFNDPCD SHTQFCFHGT CRFLVQEDKP ACVCHSGYVG ARCEHADLLA)
Conjugation	Un-conjugated
Alternate Names	ETGF; EGF-like TGF; TFGA; Protransforming growth factor alpha; TGF-alpha; TGF type 1

Application Instructions

Application table	Application	Dilution
	ELISA	Sandwich: 0.5 - 2.0 µg/ml with ARG56781 as a detection antibody
	IHC-P	0.5 µg/ml
	Neut	2.5 - 3.7µg/ml (To yield [ND50] of the biological activity of Human TGF - α (0.5 ng/ml))
	WB	0.1 - 0.2 µg/ml
Application Note	* The dilutions indicate recommended starting dilutions and the optimal dilutions or concentrations should be determined by the scientist.	

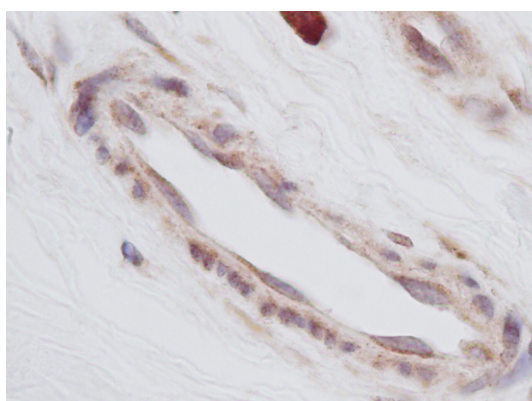
Properties

Form	Liquid
Purification	Affinity purification with immunogen.
Buffer	PBS (pH 7.2)
Concentration	1 mg/ml
Storage instruction	For continuous use, store undiluted antibody at 2-8°C for up to a week. For long-term storage, aliquot and store at -20°C or below. Storage in frost free freezers is not recommended. Avoid repeated freeze/thaw cycles. Suggest spin the vial prior to opening. The antibody solution should be gently mixed before use.
Note	For laboratory research only, not for drug, diagnostic or other use.

Bioinformation

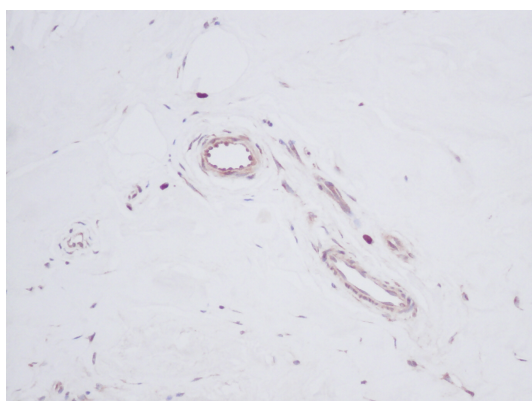
Database links	GeneID: 7039 Human Swiss-port # P01135 Human
Gene Symbol	TGFA
Gene Full Name	transforming growth factor, alpha
Background	This gene encodes a growth factor that is a ligand for the epidermal growth factor receptor, which activates a signaling pathway for cell proliferation, differentiation and development. This protein may act as either a transmembrane-bound ligand or a soluble ligand. This gene has been associated with many types of cancers, and it may also be involved in some cases of cleft lip/palate. Alternatively spliced transcript variants encoding different isoforms have been found for this gene. [provided by RefSeq, Sep 2011]
Function	TGF alpha is a mitogenic polypeptide that is able to bind to the EGF receptor/EGFR and to act synergistically with TGF beta to promote anchorage-independent cell proliferation in soft agar. [UniProt]
Calculated Mw	17 kDa

Images



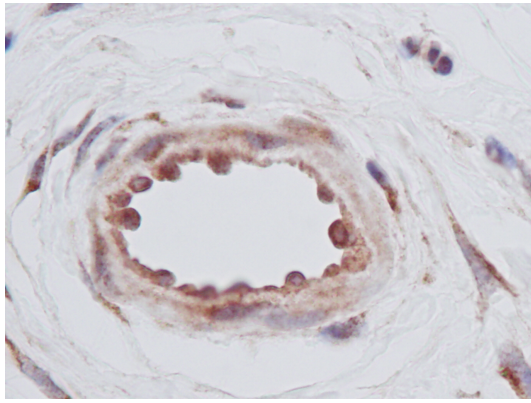
ARG56671 anti-TGF alpha antibody IHC-P image

Immunohistochemistry: Formalin-fixed and paraffin-embedded sections of Human breast invasive ductal carcinoma. The recommended ARG56671 anti-TGF alpha antibody concentration is 0.5 µg/ml with a two-hour incubation at RT. An HRP-labeled polymer detection system was used with a DAB chromogen. Antigen Retrieval: Boil tissue section in Sodium Citrate buffer (pH 6.0) followed by cooling at RT for 20 min.



ARG56671 anti-TGF alpha antibody IHC-P image

Immunohistochemistry: Formalin-fixed and paraffin-embedded sections of Human breast invasive ductal carcinoma. The recommended ARG56671 anti-TGF alpha antibody concentration is 0.5 µg/ml with a two-hour incubation at RT. An HRP-labeled polymer detection system was used with a DAB chromogen. Antigen Retrieval: Boil tissue section in Sodium Citrate buffer (pH 6.0) followed by cooling at RT for 20 min.



ARG56671 anti-TGF alpha antibody IHC-P image

Immunohistochemistry: Formalin-fixed and paraffin-embedded sections of Human breast invasive ductal carcinoma. The recommended ARG56671 anti-TGF alpha antibody concentration is 0.5 µg/ml with a two-hour incubation at RT. An HRP-labeled polymer detection system was used with a DAB chromogen. Antigen Retrieval: Boil tissue section in Sodium Citrate buffer (pH 6.0) followed by cooling at RT for 20 min.