

## ARG56668 anti-IL1 alpha antibody

Package: 50 µg  
Store at: -20°C

### Summary

Product Description	Goat Polyclonal antibody recognizes IL1 alpha
Tested Reactivity	Rat
Tested Application	ELISA, IHC-Fr, Neut, WB
Host	Goat
Clonality	Polyclonal
Isotype	IgG
Target Name	IL1 alpha
Species	Rat
Immunogen	E.coli derived Recombinant Rat IL-1α. (MAPHSFQNNL RYKLIRIVKQ EFIMNDSLNLQ NIYVDMDRH LKAASLNDLQ LEVKFDMYAY SSGGDSKYPV TLKVSNTQLF VSAQGEDKPV LLKEIPETPK LITGSETDLI FFWKINSKN YFTSAAFPPEL LIATKEQSQV HLARGLPMSI DFQIS)
Conjugation	Un-conjugated
Alternate Names	IL-1 alpha; Interleukin-1 alpha; IL1; IL1F1; Hematopoietin-1; IL1-ALPHA; IL-1A

### Application Instructions

Application table	Application	Dilution
	ELISA	Sandwich: 0.5 - 2.0 µg/ml with ARG56778 as a detection antibody
	IHC-Fr	1.0 µg/ml
	Neut	0.011 - 0.017 µg/ml (To yield [ND50] of the biological activity of Rat IL - 1α (50 pg/ml) )
	WB	0.1 - 0.2 µg/ml
Application Note	* The dilutions indicate recommended starting dilutions and the optimal dilutions or concentrations should be determined by the scientist.	

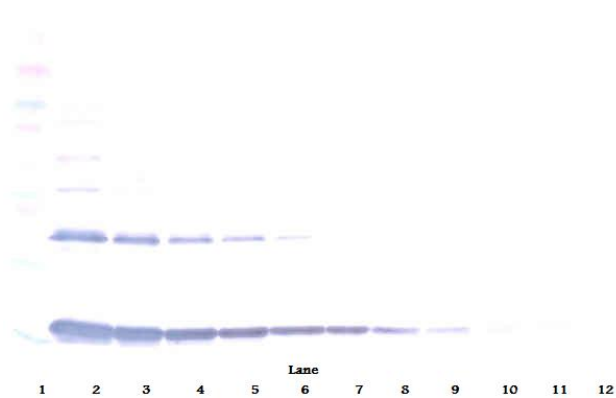
### Properties

Form	Liquid
Purification	Affinity purification with immunogen.
Buffer	PBS (pH 7.2)
Concentration	1 mg/ml
Storage instruction	For continuous use, store undiluted antibody at 2-8°C for up to a week. For long-term storage, aliquot and store at -20°C or below. Storage in frost free freezers is not recommended. Avoid repeated freeze/thaw cycles. Suggest spin the vial prior to opening. The antibody solution should be gently mixed before use.

Bioinformation

Database links	<a href="#">GeneID: 24493 Rat</a> <a href="#">Swiss-port # P16598 Rat</a>
Gene Symbol	Il1a
Gene Full Name	interleukin 1 alpha
Background	The protein encoded by this gene is a member of the interleukin 1 cytokine family. This cytokine is a pleiotropic cytokine involved in various immune responses, inflammatory processes, and hematopoiesis. This cytokine is produced by monocytes and macrophages as a proprotein, which is proteolytically processed and released in response to cell injury, and thus induces apoptosis. This gene and eight other interleukin 1 family genes form a cytokine gene cluster on chromosome 2. It has been suggested that the polymorphism of these genes is associated with rheumatoid arthritis and Alzheimer's disease. [provided by RefSeq, Jul 2008]
Function	Produced by activated macrophages, IL-1 stimulates thymocyte proliferation by inducing IL-2 release, B-cell maturation and proliferation, and fibroblast growth factor activity. IL-1 proteins are involved in the inflammatory response, being identified as endogenous pyrogens, and are reported to stimulate the release of prostaglandin and collagenase from synovial cells. [UniProt]
Highlight	Related products: <a href="#">IL1 alpha antibodies</a> ; <a href="#">IL1 alpha ELISA Kits</a> ; <a href="#">IL1 alpha recombinant proteins</a> ; <a href="#">Anti-Goat IgG secondary antibodies</a> ; Related news: <a href="#">HMGB1 in inflammation</a> <a href="#">Inflammatory Cytokines</a>
Calculated Mw	31 kDa

Images

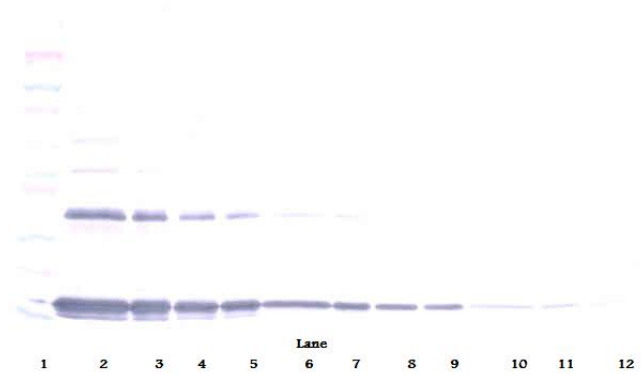


ARG56668 anti-IL1 alpha antibody WB image

Western blot: 250 - 0.24 ng of Rat IL-1 $\alpha$  stained with ARG56668 anti-IL1 alpha antibody, under reducing conditions.

ARG56668 anti-IL1 alpha antibody WB image

Western blot: 250 - 0.24 ng of Rat IL-1 $\alpha$  stained with ARG56668 anti-IL1 alpha antibody, under non-reducing conditions.



ARG56668 anti-IL1 alpha antibody standard curve image

Sandwich ELISA: ARG56668 anti-IL1 alpha antibody as a capture antibody at 0.5 - 2.0  $\mu$ g/ml combined with ARG56778 anti-IL1 alpha antibody (Biotin) as a detection antibody. Results of a typical standard run with optical density.

