

ARG56666 anti-IL1 alpha antibody

Package: 50 µg
Store at: -20°C

Summary

Product Description	Rabbit Polyclonal antibody recognizes IL1 alpha
Tested Reactivity	Hu, Rat
Tested Application	ELISA, IHC-P, Neut, WB
Host	Rabbit
Clonality	Polyclonal
Isotype	IgG
Target Name	IL1 alpha
Species	Human
Immunogen	E.coli derived Recombinant Human IL-1α. (SAPFSFLSNV KYNFMRIKY EFILNDALNQ SIIRANDQYL TAAALHNLDE AVKFDMGAYK SSKDDAKITV ILRISKQLY VTAQDEDPV LLKEMPEIPK TITGSETNLL FFWETHGKN YFTSVAHPNL FIATKQDYWV CLAGGPPSIT DFQILENQA)
Conjugation	Un-conjugated
Alternate Names	IL-1 alpha; Interleukin-1 alpha; IL1; IL1F1; Hematopoietin-1; IL1-ALPHA; IL-1A

Application Instructions

Application table	Application	Dilution
	ELISA	Sandwich: 0.5 - 2.0 µg/ml with ARG56776 as a detection antibody
	IHC-P	1.0 µg/ml
	Neut	1.0 - 2.0 µg/ml (To yield [ND50] of the biological activity of hIL - 1α (20 ng/ml))
	WB	0.1 - 0.2 µg/ml
Application Note	* The dilutions indicate recommended starting dilutions and the optimal dilutions or concentrations should be determined by the scientist.	

Properties

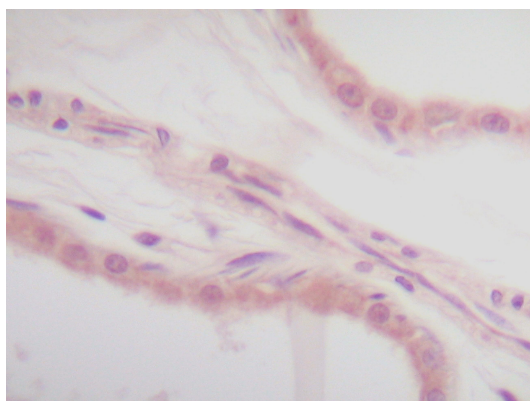
Form	Liquid
Purification	Affinity purification with immunogen.
Buffer	PBS (pH 7.2)
Concentration	1 mg/ml
Storage instruction	For continuous use, store undiluted antibody at 2-8°C for up to a week. For long-term storage, aliquot and store at -20°C or below. Storage in frost free freezers is not recommended. Avoid repeated freeze/thaw cycles. Suggest spin the vial prior to opening. The antibody solution should be gently mixed before use.

Note For laboratory research only, not for drug, diagnostic or other use.

Bioinformation

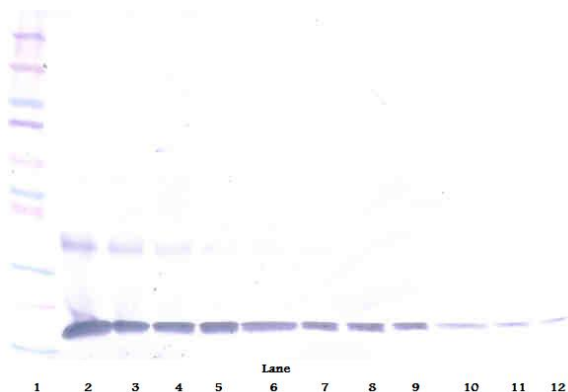
Database links	GeneID: 24493 Rat GeneID: 3552 Human Swiss-port # P01583 Human Swiss-port # P16598 Rat
Gene Symbol	IL1A
Gene Full Name	interleukin 1, alpha
Background	The protein encoded by this gene is a member of the interleukin 1 cytokine family. This cytokine is a pleiotropic cytokine involved in various immune responses, inflammatory processes, and hematopoiesis. This cytokine is produced by monocytes and macrophages as a proprotein, which is proteolytically processed and released in response to cell injury, and thus induces apoptosis. This gene and eight other interleukin 1 family genes form a cytokine gene cluster on chromosome 2. It has been suggested that the polymorphism of these genes is associated with rheumatoid arthritis and Alzheimer's disease. [provided by RefSeq, Jul 2008]
Function	Produced by activated macrophages, IL-1 stimulates thymocyte proliferation by inducing IL-2 release, B-cell maturation and proliferation, and fibroblast growth factor activity. IL-1 proteins are involved in the inflammatory response, being identified as endogenous pyrogens, and are reported to stimulate the release of prostaglandin and collagenase from synovial cells. [UniProt]
Highlight	Related products: IL1 alpha antibodies ; IL1 alpha ELISA Kits ; IL1 alpha recombinant proteins ; Anti-Rabbit IgG secondary antibodies ; Related news: HMGB1 in inflammation Inflammatory Cytokines
Calculated Mw	31 kDa

Images



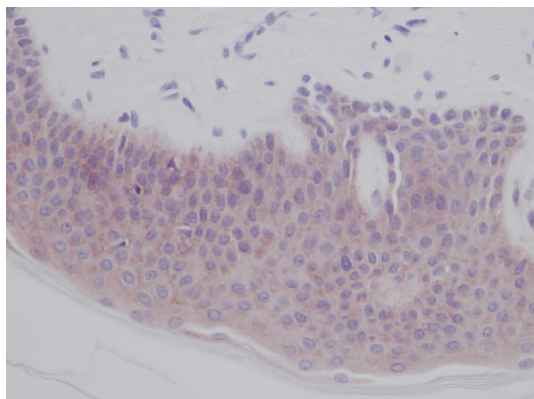
ARG56666 anti-IL1 alpha antibody IHC-P image

Immunohistochemistry: Formalin-fixed and paraffin-embedded sections of normal Human skin. The recommended ARG56666 anti-IL1 alpha antibody concentration is 1.0 µg/ml overnight at 4°C. An HRP-labeled polymer detection system was used with a non-alcohol soluble AEC chromogen. Antigen Retrieval: Incubate tissue section in a buffer (proteinase K) at RT for 10 min.



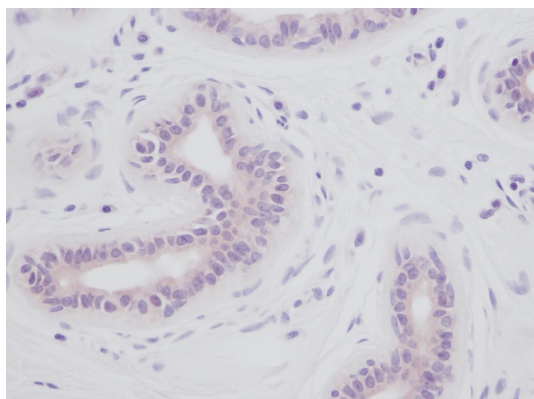
ARG56666 anti-IL1 alpha antibody WB image

Western blot: 250 - 0.24 ng of Human IL-1 α stained with ARG56666 anti-IL1 alpha antibody, under reducing conditions.



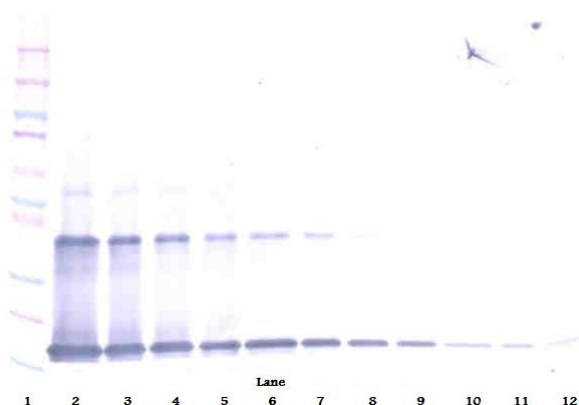
ARG56666 anti-IL1 alpha antibody IHC-P image

Immunohistochemistry: Formalin-fixed and paraffin-embedded sections of normal Human skin. The recommended ARG56666 anti-IL1 alpha antibody concentration is 1.0 μ g/ml overnight at 4°C. An HRP-labeled polymer detection system was used with a non-alcohol soluble AEC chromogen. Antigen Retrieval: Incubate tissue section in a buffer (proteinase K) at RT for 10 min.



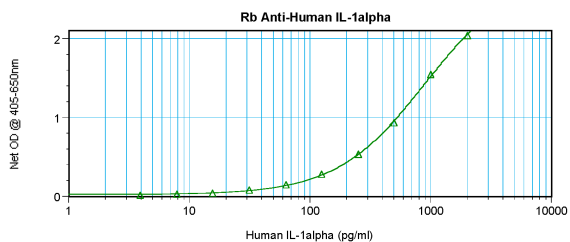
ARG56666 anti-IL1 alpha antibody IHC-P image

Immunohistochemistry: Formalin-fixed and paraffin-embedded sections of normal Human skin. The recommended ARG56666 anti-IL1 alpha antibody concentration is 1.0 μ g/ml overnight at 4°C. An HRP-labeled polymer detection system was used with a non-alcohol soluble AEC chromogen. Antigen Retrieval: Incubate tissue section in a buffer (proteinase K) at RT for 10 min.



ARG56666 anti-IL1 alpha antibody WB image

Western blot: 250 - 0.24 ng of Human IL-1 α stained with ARG56666 anti-IL1 alpha antibody, under non-reducing conditions.



ARG56666 anti-IL1 alpha antibody standard curve image

Sandwich ELISA: ARG56666 anti-IL1 alpha antibody as a capture antibody at 0.5 - 2.0 µg/ml combined with ARG56776 anti-IL1 alpha antibody (Biotin) as a detection antibody. Results of a typical standard run with optical density.