

## ARG56641 anti-RELM alpha antibody

Package: 50 µg  
Store at: -20°C

### Summary

Product Description	Rabbit Polyclonal antibody recognizes RELM alpha
Tested Reactivity	Hu, Ms
Tested Application	ELISA, IHC-P, WB
Host	Rabbit
Clonality	Polyclonal
Isotype	IgG
Target Name	RELM alpha
Species	Mouse
Immunogen	E.coli derived Recombinant Mouse RELMα. (MDETIEIIVE NKVKELLANP ANYPSTVTKT LSCTSVKTMN RWASCPAGMT ATGCACGFAC GSWEIQSGDT CNCLCLLDVW TTARCCQLS)
Conjugation	Un-conjugated
Alternate Names	Fizz-1; Xcp2; RELM-alpha; Parasite-induced macrophage novel gene 1 protein; Hypoxia-induced mitogenic factor; RELMa; RELMalpha; Resistin-like alpha; HIMF; Cysteine-rich secreted protein A12-gamma; Cysteine-rich secreted protein FIZZ1; 1810019L16Rik; Fizz1

### Application Instructions

Application table	Application	Dilution
	ELISA	Sandwich: 0.5 - 2.0 µg/ml with ARG56751 as a detection antibody
	IHC-P	4 ng/ml
	WB	0.1 - 0.2 µg/ml
Application Note	* The dilutions indicate recommended starting dilutions and the optimal dilutions or concentrations should be determined by the scientist.	

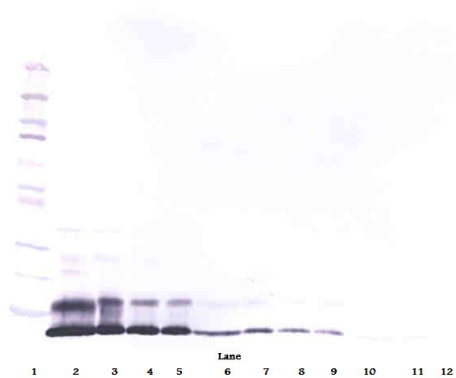
### Properties

Form	Liquid
Purification	Affinity purification with immunogen.
Buffer	PBS (pH 7.2)
Concentration	1 mg/ml
Storage instruction	For continuous use, store undiluted antibody at 2-8°C for up to a week. For long-term storage, aliquot and store at -20°C or below. Storage in frost free freezers is not recommended. Avoid repeated freeze/thaw cycles. Suggest spin the vial prior to opening. The antibody solution should be gently mixed before use.
Note	For laboratory research only, not for drug, diagnostic or other use.

Bioinformation

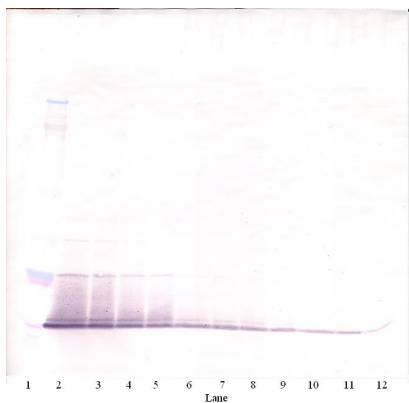
Database links	<a href="#">GeneID: 57262 Mouse</a> <a href="#">Swiss-port # Q9EP95 Mouse</a>
Gene Symbol	Retnla
Gene Full Name	resistin like alpha
Function	Probable hormone. Plays a role in pulmonary vascular remodeling. [UniProt]
Calculated Mw	12 kDa

Images



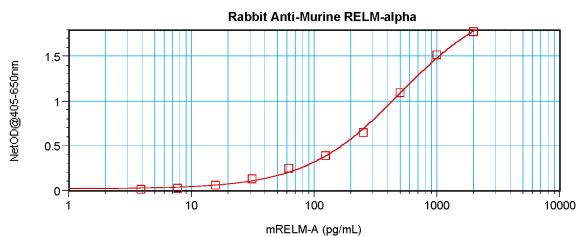
ARG56641 anti-RELM alpha antibody WB image

Western blot: 250 - 0.24 ng of Mouse RELM $\alpha$  stained with ARG56641 anti-RELM alpha antibody, under reducing conditions.



ARG56641 anti-RELM alpha antibody WB image

Western blot: 250 - 0.24 ng of Mouse RELM $\alpha$  stained with ARG56641 anti-RELM alpha antibody, under non-reducing conditions.



ARG56641 anti-RELM alpha antibody standard curve image

Sandwich ELISA: ARG56641 anti-RELM alpha antibody as a capture antibody at 0.5 - 2.0  $\mu$ g/ml combined with ARG56751 anti-RELM alpha antibody (Biotin) as a detection antibody. Results of a typical standard run with optical density.