

## ARG56490 anti-IP Receptor antibody

Package: 250 µl  
Store at: -20°C

### Summary

Product Description	Rabbit Polyclonal antibody recognizes IP Receptor
Tested Reactivity	Ms
Tested Application	WB
Host	Rabbit
Clonality	Polyclonal
Isotype	IgG
Target Name	IP Receptor
Species	Mouse
Immunogen	Synthetic peptide around the N-terminus of Mouse IP Receptor.
Conjugation	Un-conjugated
Alternate Names	PRIPR; Prostaglandin I2 receptor; IP; Prostacyclin receptor; Prostanoid IP receptor; PGI2 receptor; PGI receptor

### Application Instructions

Application table	Application	Dilution
	WB	1:200
Application Note	* The dilutions indicate recommended starting dilutions and the optimal dilutions or concentrations should be determined by the scientist.	

### Properties

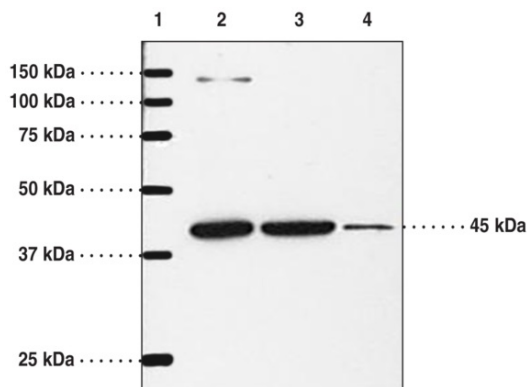
Form	Liquid
Purification	Affinity purification with immunogen.
Buffer	TBS (pH 7.4), 0.02% Sodium azide, 50% Glycerol and 0.1% BSA.
Preservative	0.02% Sodium azide
Stabilizer	50% Glycerol and 0.1% BSA
Storage instruction	For continuous use, store undiluted antibody at 2-8°C for up to a week. For long-term storage, aliquot and store at -20°C. Storage in frost free freezers is not recommended. Avoid repeated freeze/thaw cycles. Suggest spin the vial prior to opening. The antibody solution should be gently mixed before use.
Note	For laboratory research only, not for drug, diagnostic or other use.

### Bioinformation

Database links	<a href="#">GeneID: 19222 Mouse</a>
----------------	-------------------------------------

Gene Symbol	Ptgir
Gene Full Name	prostaglandin I receptor (IP)
Background	The protein encoded by this gene is a member of the G-protein coupled receptor family 1 and has been shown to be a receptor for prostacyclin. Prostacyclin, the major product of cyclooxygenase in macrovascular endothelium, elicits a potent vasodilation and inhibition of platelet aggregation through binding to this receptor. [provided by RefSeq, Jul 2008]
Function	Receptor for prostacyclin (prostaglandin I <sub>2</sub> or PGI <sub>2</sub> ). The activity of this receptor is mediated by G(s) proteins which activate adenylate cyclase. [UniProt]
Calculated Mw	41 kDa
PTM	Palmitoylation of either Cys-308 or Cys-311 is sufficient to maintain functional coupling to G(s) and signaling. Isoprenylation does not influence ligand binding but is required for efficient coupling to the effectors adenylate cyclase and phospholipase C.

## Images



ARG56490 anti-IP Receptor antibody WB image

Western blot: 1) Precision Plus Protein Standard, 2) 50 µg of HEK 293T cell lysate, 3) 35 µg of DLD1 cell lysate, and 4) 50 µg of A549 cell lysate stained with ARG56490 anti-IP Receptor antibody.