

ARG56485 anti-PTGFR antibody

Package: 250 µl
Store at: -20°C

Summary

Product Description	Rabbit Polyclonal antibody recognizes PTGFR
Tested Reactivity	Hu, Ms, Rat, Bov, Sheep
Tested Application	WB
Host	Rabbit
Clonality	Polyclonal
Isotype	IgG
Target Name	PTGFR
Species	Mouse
Immunogen	Synthetic peptide around the N-terminal cytoplasmic region of Mouse PTGFR.
Conjugation	Un-conjugated
Alternate Names	FP; Prostanoid FP receptor; Prostaglandin F2-alpha receptor; PGF receptor; PGF2-alpha receptor

Application Instructions

Application table	Application	Dilution
	WB	1:200
Application Note	* The dilutions indicate recommended starting dilutions and the optimal dilutions or concentrations should be determined by the scientist.	

Properties

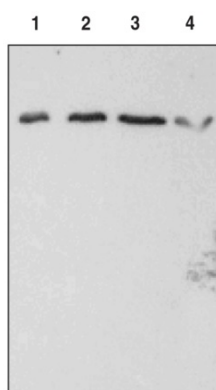
Form	Liquid
Purification	Affinity purification with immunogen.
Buffer	TBS (pH 7.4) and 5 mg/ml BSA.
Stabilizer	5 mg/ml BSA
Storage instruction	For continuous use, store undiluted antibody at 2-8°C for up to a week. For long-term storage, aliquot and store at -20°C or below. Storage in frost free freezers is not recommended. Avoid repeated freeze/thaw cycles. Suggest spin the vial prior to opening. The antibody solution should be gently mixed before use.
Note	For laboratory research only, not for drug, diagnostic or other use.

Bioinformation

Gene Symbol	PTGFR
Gene Full Name	prostaglandin F receptor (FP)

Background	The protein encoded by this gene is member of the G-protein coupled receptor family. This protein is a receptor for prostaglandin F2-alpha (PGF2-alpha), which is known to be a potent luteolytic agent, and may also be involved in modulating intraocular pressure and smooth muscle contraction in uterus. Knockout studies in mice suggest that the interaction of PGF2-alpha with this receptor may initiate parturition in ovarian luteal cells and thus induce luteolysis. Two transcript variants encoding different isoforms have been found for this gene. [provided by RefSeq, Jul 2008]
Function	Receptor for prostaglandin F2-alpha (PGF2-alpha). The activity of this receptor is mediated by G proteins which activate a phosphatidylinositol-calcium second messenger system. Initiates luteolysis in the corpus luteum (By similarity). Isoforms 2 to 7 do not bind PGF2-alpha but are proposed to modulate signaling by participating in variant receptor complexes; heterodimers between isoform 1 and isoform 5 are proposed to be a receptor for prostamides including the synthetic analog bimatoprost. [UniProt]
Calculated Mw	40 kDa

Images



ARG56485 anti-PTGFR antibody WB image

Western blot: 1) 20 µg of Bovine cornea, 2) 30 µg of Bovine cornea, 3) 40 µg of Bovine cornea, and 4) 30 µg of Ram seminal vesicle microsomes stained with ARG56485 anti-PTGFR antibody.