

## ARG56398 anti-THOC1 antibody

Package: 100 µl  
Store at: -20°C

### Summary

Product Description	Rabbit Polyclonal antibody recognizes THOC1
Tested Reactivity	Hu, Ms, Rat
Tested Application	ICC/IF, IHC-P, WB
Host	Rabbit
Clonality	Polyclonal
Isotype	IgG
Target Name	THOC1
Species	Human
Immunogen	Recombinant protein of Human THOC1
Conjugation	Un-conjugated
Alternate Names	hTRESX84; HPR1; Tho1; P84N5; P84; THO complex subunit 1; p84N5; Nuclear matrix protein p84

### Application Instructions

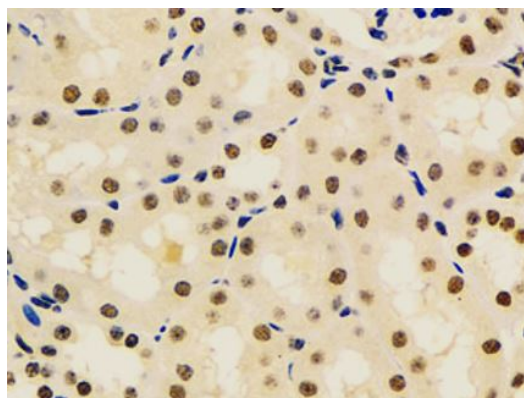
Application table	Application	Dilution
	ICC/IF	1:50 - 1:200
	IHC-P	1:50 - 1:200
	WB	1:500 - 1:2000
Application Note	* The dilutions indicate recommended starting dilutions and the optimal dilutions or concentrations should be determined by the scientist.	
Positive Control	BT474	

### Properties

Form	Liquid
Purification	Affinity purification with immunogen.
Buffer	PBS (pH 7.3), 0.02% Sodium azide and 50% Glycerol.
Preservative	0.02% sodium azide
Stabilizer	50% Glycerol
Storage instruction	For continuous use, store undiluted antibody at 2-8°C for up to a week. For long-term storage, aliquot and store at -20°C. Storage in frost free freezers is not recommended. Avoid repeated freeze/thaw cycles. Suggest spin the vial prior to opening. The antibody solution should be gently mixed before use.
Note	For laboratory research only, not for drug, diagnostic or other use.

Database links	<a href="#">GeneID: 225160 Mouse</a> <a href="#">GeneID: 9984 Human</a> <a href="#">Swiss-port # Q8R3N6 Mouse</a> <a href="#">Swiss-port # Q96FV9 Human</a>
Gene Symbol	THOC1
Gene Full Name	THO complex 1
Background	HPR1 is part of the TREX (transcription/export) complex, which includes TEX1 (MIM 606929), THO2 (MIM 300395), ALY (MIM 604171), and UAP56 (MIM 142560).[supplied by OMIM, Nov 2010]
Function	<p>Required for efficient export of polyadenylated RNA. Acts as component of the THO subcomplex of the TREX complex which is thought to couple mRNA transcription, processing and nuclear export, and which specifically associates with spliced mRNA and not with unspliced pre-mRNA. TREX is recruited to spliced mRNAs by a transcription-independent mechanism, binds to mRNA upstream of the exon-junction complex (EJC) and is recruited in a splicing- and cap-dependent manner to a region near the 5' end of the mRNA where it functions in mRNA export to the cytoplasm via the TAP/NFX1 pathway. The TREX complex is essential for the export of Kaposi's sarcoma-associated herpesvirus (KSHV) intronless mRNAs and infectious virus production. Regulates transcriptional elongation of a subset of genes. Involved in genome stability by preventing co-transcriptional R-loop formation.</p> <p>Participates in an apoptotic pathway which is characterized by activation of caspase-6, increases in the expression of BAK1 and BCL2L1 and activation of NF-kappa-B. This pathway does not require p53/TP53, nor does the presence of p53/TP53 affect the efficiency of cell killing. Activates a G2/M cell cycle checkpoint prior to the onset of apoptosis. Apoptosis is inhibited by association with RB1. [UniProt]</p>
Calculated Mw	76 kDa
PTM	Expression is altered specifically during apoptosis and is accompanied by the appearance of novel forms with smaller apparent molecular mass. Polyubiquitinated, leading to proteasomal degradation; probably involves NEDD4.

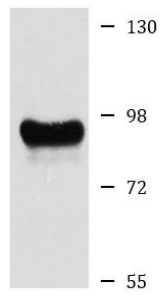
## Images



ARG56398 anti-THOC1 antibody IHC-P image

Immunohistochemistry: Paraffin-embedded Mouse kidney stained with ARG56398 anti-THOC1 antibody at 1:100 dilution.

ARG56398 anti-THOC1 antibody WB image



Western blot: BT474 cell lysate stained with ARG56398 anti-THOC1 antibody.

BT474