

**ARG56375**  
**anti-CKAP4 antibody**Package: 100 µl  
Store at: -20°C**Summary**

Product Description	Rabbit Polyclonal antibody recognizes CKAP4
Tested Reactivity	Hu, Ms, Rat
Tested Application	ICC/IF, WB
Host	Rabbit
Clonality	Polyclonal
Isotype	IgG
Target Name	CKAP4
Species	Human
Immunogen	Synthetic peptide of Human CKAP4
Conjugation	Un-conjugated
Alternate Names	ERGIC-63; p63; CLIMP-63; Climp-63; 63-kDa cytoskeleton-linking membrane protein; Cytoskeleton-associated protein 4

**Application Instructions**

Application table	Application	Dilution
	ICC/IF	1:50 - 1:200
	WB	1:500 - 1:2000
Application Note	* The dilutions indicate recommended starting dilutions and the optimal dilutions or concentrations should be determined by the scientist.	
Positive Control	HepG2	

**Properties**

Form	Liquid
Purification	Affinity purification with immunogen.
Buffer	PBS (pH 7.3), 0.02% Sodium azide and 50% Glycerol.
Preservative	0.02% sodium azide
Stabilizer	50% Glycerol
Storage instruction	For continuous use, store undiluted antibody at 2-8°C for up to a week. For long-term storage, aliquot and store at -20°C. Storage in frost free freezers is not recommended. Avoid repeated freeze/thaw cycles. Suggest spin the vial prior to opening. The antibody solution should be gently mixed before use.
Note	For laboratory research only, not for drug, diagnostic or other use.

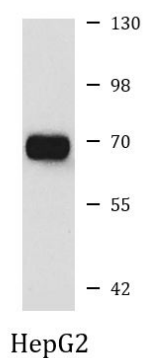
## Bioinformation

---

Database links	<a href="#">GeneID: 10970 Human</a> <a href="#">GeneID: 216197 Mouse</a> <a href="#">Swiss-port # Q07065 Human</a> <a href="#">Swiss-port # Q8BMK4 Mouse</a>
Gene Symbol	CKAP4
Gene Full Name	cytoskeleton-associated protein 4
Function	High-affinity epithelial cell surface receptor for APF.  Mediates the anchoring of the endoplasmic reticulum to microtubules. [UniProt]
Calculated Mw	66 kDa
PTM	Reversibly palmitoylated. Palmitoylation at Cys-100 by DHHC2 is required for its trafficking from the ER to the plasma membrane and for its perinuclear localization. Increased phosphorylation during mitosis prevents binding to microtubules.

## Images

---



ARG56375 anti-CKAP4 antibody WB image

Western blot: HepG2 cell lysate stained with ARG56375 anti-CKAP4 antibody.