

ARG56356 anti-SERPINA4 / Kallistatin antibody

Package: 100 µl
Store at: -20°C

Summary

Product Description	Rabbit Polyclonal antibody recognizes SERPINA4 / Kallistatin
Tested Reactivity	Hu, Ms, Rat
Tested Application	ICC/IF, WB
Host	Rabbit
Clonality	Polyclonal
Isotype	IgG
Target Name	SERPINA4 / Kallistatin
Species	Human
Immunogen	Recombinant protein of Human SERPINA4 / Kallistatin
Conjugation	Un-conjugated
Alternate Names	KST; PI-4; kallistatin; Peptidase inhibitor 4; KLST; KAL; Serpin A4; Kallikrein inhibitor; PI4; Kallistatin

Application Instructions

Application table	Application	Dilution
	ICC/IF	1:50 - 1:100
	WB	1:500 - 1:1000
Application Note	* The dilutions indicate recommended starting dilutions and the optimal dilutions or concentrations should be determined by the scientist.	
Positive Control	Mouse pancreas	

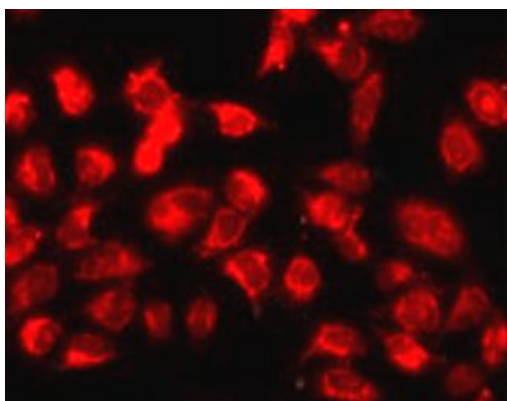
Properties

Form	Liquid
Purification	Affinity purification with immunogen.
Buffer	PBS (pH 7.3), 0.02% Sodium azide and 50% Glycerol.
Preservative	0.02% sodium azide
Stabilizer	50% Glycerol
Storage instruction	For continuous use, store undiluted antibody at 2-8°C for up to a week. For long-term storage, aliquot and store at -20°C. Storage in frost free freezers is not recommended. Avoid repeated freeze/thaw cycles. Suggest spin the vial prior to opening. The antibody solution should be gently mixed before use.
Note	For laboratory research only, not for drug, diagnostic or other use.

Bioinformation

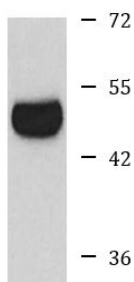
Database links	GeneID: 5267 Human Swiss-port # P29622 Human
Gene Symbol	SERPINA4
Gene Full Name	serpin peptidase inhibitor, clade A (alpha-1 antitrypsin, antitrypsin), member 4
Function	Inhibits human amidolytic and kininogenase activities of tissue kallikrein. Inhibition is achieved by formation of an equimolar, heat- and SDS-stable complex between the inhibitor and the enzyme, and generation of a small C-terminal fragment of the inhibitor due to cleavage at the reactive site by tissue kallikrein. [UniProt]
Calculated Mw	49 kDa
PTM	The N-terminus is blocked.

Images



ARG56356 anti-SERPINA4 / Kallistatin antibody ICC/IF image

Immunofluorescence: MCF7 cells stained with ARG56356 anti-SERPINA4 / Kallistatin antibody.



Mouse pancreas

ARG56356 anti-SERPINA4 / Kallistatin antibody WB image

Western blot: Mouse pancreas lysate stained with ARG56356 anti-SERPINA4 / Kallistatin antibody.