

## ARG56345 anti-RBBP5 antibody

Package: 100 µl  
Store at: -20°C

### Summary

Product Description	Rabbit Polyclonal antibody recognizes RBBP5
Tested Reactivity	Hu, Ms, Rat
Tested Application	ICC/IF, IHC-P, IP, WB
Host	Rabbit
Clonality	Polyclonal
Isotype	IgG
Target Name	RBBP5
Species	Human
Immunogen	Recombinant protein of Human RBBP5
Conjugation	Un-conjugated
Alternate Names	RBQ3; Retinoblastoma-binding protein 5; RBBP-5; Retinoblastoma-binding protein RBQ-3; SWD1

### Application Instructions

Application table	Application	Dilution
	ICC/IF	1:50 - 1:200
	IHC-P	1:50 - 1:200
	IP	1:50 - 1:200
	WB	1:500 - 1:2000
Application Note	* The dilutions indicate recommended starting dilutions and the optimal dilutions or concentrations should be determined by the scientist.	
Positive Control	HeLa	

### Properties

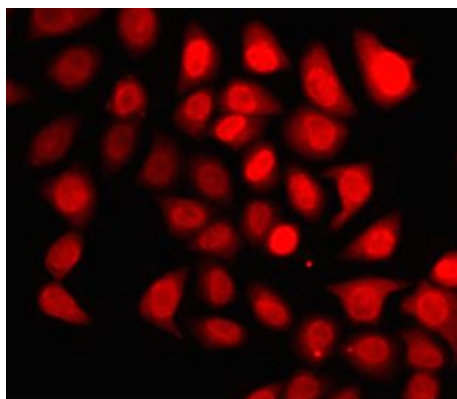
Form	Liquid
Purification	Affinity purification with immunogen.
Buffer	PBS (pH 7.3), 0.02% Sodium azide and 50% Glycerol.
Preservative	0.02% Sodium azide
Stabilizer	50% Glycerol
Storage instruction	For continuous use, store undiluted antibody at 2-8°C for up to a week. For long-term storage, aliquot and store at -20°C. Storage in frost free freezers is not recommended. Avoid repeated freeze/thaw cycles. Suggest spin the vial prior to opening. The antibody solution should be gently mixed before use.

Note For laboratory research only, not for drug, diagnostic or other use.

## Bioinformation

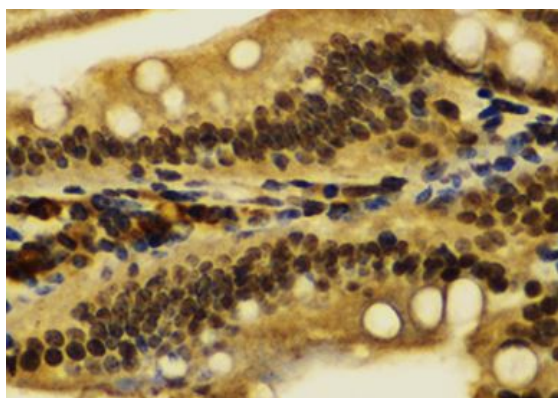
Database links	<a href="#">GeneID: 213464 Mouse</a> <a href="#">GeneID: 5929 Human</a> <a href="#">Swiss-port # Q15291 Human</a> <a href="#">Swiss-port # Q8BX09 Mouse</a>
Gene Symbol	RBBP5
Gene Full Name	retinoblastoma binding protein 5
Background	This gene encodes a ubiquitously expressed nuclear protein which belongs to a highly conserved subfamily of WD-repeat proteins. The encoded protein binds directly to retinoblastoma protein, which regulates cell proliferation. It interacts preferentially with the underphosphorylated retinoblastoma protein via the E1A-binding pocket B. Three alternatively spliced transcript variants that encode different protein isoforms have been described for this gene. [provided by RefSeq, Jul 2010]
Function	In embryonic stem (ES) cells, plays a crucial role in the differentiation potential, particularly along the neural lineage, regulating gene induction and H3 'Lys-4' methylation at key developmental loci, including that mediated by retinoic acid (By similarity). As part of the MLL1/MLL complex, involved in mono-, di- and trimethylation at 'Lys-4' of histone H3. Histone H3 'Lys-4' methylation represents a specific tag for epigenetic transcriptional activation. [UniProt]
Calculated Mw	59 kDa

## Images



ARG56345 anti-RBBP5 antibody ICC/IF image

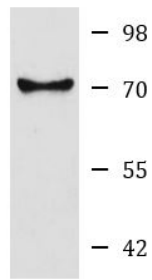
Immunofluorescence: U2OS cells stained with ARG56345 anti-RBBP5 antibody.



ARG56345 anti-RBBP5 antibody IHC-P image

Immunohistochemistry: Paraffin-embedded Rat Intestine stained with ARG56345 anti-RBBP5 antibody at 1:100 dilution.

ARG56345 anti-RBBP5 antibody WB image



Western blot: HeLa cell lysate stained with ARG56345 anti-RBBP5 antibody.

HeLa

---