

ARG56286 anti-UQCRC2 antibody

Package: 100 µl
Store at: -20°C

Summary

Product Description	Rabbit Polyclonal antibody recognizes UQCRC2
Tested Reactivity	Hu, Ms, Rat
Tested Application	ICC/IF, IHC-P, IP, WB
Host	Rabbit
Clonality	Polyclonal
Isotype	IgG
Target Name	UQCRC2
Species	Human
Immunogen	Recombinant protein of Human UQCRC2
Conjugation	Un-conjugated
Alternate Names	Complex III subunit 2; Core protein II; UQCRC2; QCR2; Ubiquinol-cytochrome-c reductase complex core protein 2; Cytochrome b-c1 complex subunit 2, mitochondrial; MC3DN5

Application Instructions

Application table	Application	Dilution
	ICC/IF	1:50-1:200
	IHC-P	1:50 - 1:100
	IP	1:50 - 1:200
	WB	1:500 - 1:2000
Application Note	* The dilutions indicate recommended starting dilutions and the optimal dilutions or concentrations should be determined by the scientist.	
Positive Control	Mouse spinal cord	
Observed Size	~ 45 kDa	

Properties

Form	Liquid
Purification	Affinity purification with immunogen.
Buffer	PBS (pH 7.3), 0.02% Sodium azide and 50% Glycerol.
Preservative	0.02% Sodium azide
Stabilizer	50% Glycerol
Storage instruction	For continuous use, store undiluted antibody at 2-8°C for up to a week. For long-term storage, aliquot and store at -20°C. Storage in frost free freezers is not recommended. Avoid repeated freeze/thaw

cycles. Suggest spin the vial prior to opening. The antibody solution should be gently mixed before use.

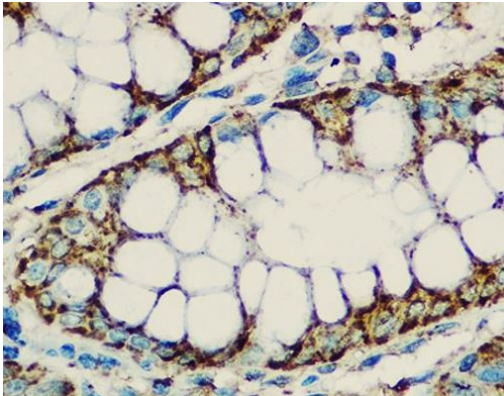
Note

For laboratory research only, not for drug, diagnostic or other use.

Bioinformation

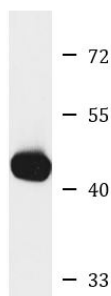
Gene Symbol	UQCRC2
Gene Full Name	ubiquinol-cytochrome c reductase core protein II
Background	The protein encoded by this gene is located in the mitochondrion, where it is part of the ubiquinol-cytochrome c reductase complex (also known as complex III). This complex constitutes a part of the mitochondrial respiratory chain. Defects in this gene are a cause of mitochondrial complex III deficiency nuclear type 5. [provided by RefSeq, Jul 2015]
Function	This is a component of the ubiquinol-cytochrome c reductase complex (complex III or cytochrome b-c1 complex), which is part of the mitochondrial respiratory chain. The core protein 2 is required for the assembly of the complex. [UniProt]
Calculated Mw	48 kDa

Images



ARG56286 anti-UQCRC2 antibody IHC-P image

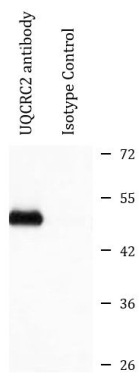
Immunohistochemistry: Paraffin-embedded Human colon tissue stained with ARG56286 anti-UQCRC2 antibody at 1:100 dilution.



Mouse spinal cord

ARG56286 anti-UQCRC2 antibody WB image

Western blot: Mouse spinal cord lysate stained with ARG56286 anti-UQCRC2 antibody.



ARG56286 anti-UQCRC2 antibody IP image

Immunoprecipitation: 200 µg extracts of HepG2 cells were immunoprecipitated and stained with ARG56286 anti-UQCRC2 antibody at 1:1000 dilution.