

ARG56249 anti-SSB antibody

Package: 100 µl
Store at: -20°C

Summary

| | |
|---------------------|--|
| Product Description | Rabbit Polyclonal antibody recognizes SSB |
| Tested Reactivity | Hu |
| Tested Application | ICC/IF, IHC-P, IP, WB |
| Host | Rabbit |
| Clonality | Polyclonal |
| Isotype | IgG |
| Target Name | SSB |
| Species | Human |
| Immunogen | Recombinant protein of Human SSB |
| Conjugation | Un-conjugated |
| Alternate Names | LARP3; Sjogren syndrome type B antigen; La; La ribonucleoprotein; Lupus La protein; La autoantigen; La/SSB; SS-B |

Application Instructions

| Application table | Application | Dilution |
|-------------------|--|----------------|
| | ICC/IF | 1:50 - 1:200 |
| | IHC-P | 1:50 - 1:200 |
| | IP | 1:50 - 1:200 |
| | WB | 1:500 - 1:1000 |
| | | |
| Application Note | * The dilutions indicate recommended starting dilutions and the optimal dilutions or concentrations should be determined by the scientist. | |
| Positive Control | 293 | |

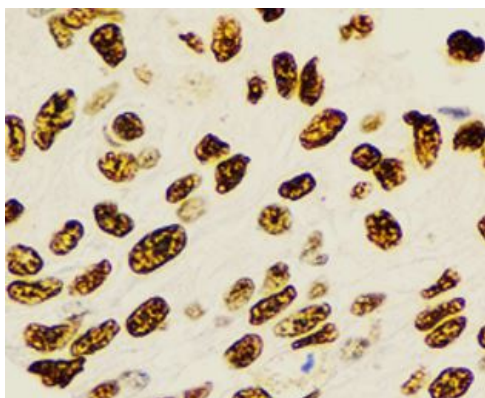
Properties

| | |
|---------------------|---|
| Form | Liquid |
| Purification | Affinity purification with immunogen. |
| Buffer | PBS (pH 7.3), 0.02% Sodium azide and 50% Glycerol. |
| Preservative | 0.02% sodium azide |
| Stabilizer | 50% Glycerol |
| Storage instruction | For continuous use, store undiluted antibody at 2-8°C for up to a week. For long-term storage, aliquot and store at -20°C. Storage in frost free freezers is not recommended. Avoid repeated freeze/thaw cycles. Suggest spin the vial prior to opening. The antibody solution should be gently mixed before use. |

Bioinformation

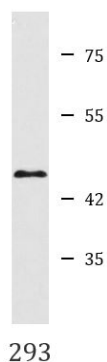
| | |
|----------------|---|
| Database links | GeneID: 6741 Human Swiss-port # P05455 Human |
| Gene Symbol | SSB |
| Gene Full Name | Sjogren syndrome antigen B (autoantigen La) |
| Background | The protein encoded by this gene is involved in diverse aspects of RNA metabolism, including binding and protecting poly(U) termini of nascent RNA polymerase III transcripts from exonuclease digestion, processing 5' and 3' ends of pre-tRNA precursors, acting as an RNA chaperone, and binding viral RNAs associated with hepatitis C virus. Autoantibodies reacting with this protein are found in the sera of patients with Sjogren syndrome and systemic lupus erythematosus. Alternative promoter usage results in two different transcript variants which encode the same protein. [provided by RefSeq, Jun 2014] |
| Function | Binds to the 3' poly(U) terminus of nascent RNA polymerase III transcripts, protecting them from exonuclease digestion and facilitating their folding and maturation. [UniProt] |
| Calculated Mw | 47 kDa |
| PTM | Phosphorylated. The phosphorylation sites are at the C-terminal part of the protein. The N-terminus is blocked. |

Images



ARG56249 anti-SSB antibody IHC-P image

Immunohistochemistry: Paraffin-embedded Human prostate cancer stained with ARG56249 anti-SSB antibody at 1:100 dilution.



ARG56249 anti-SSB antibody WB image

Western blot: 293 cell lysate stained with ARG56249 anti-SSB antibody.