

ARG56230 anti-Synaptophysin antibody

Package: 100 µl
Store at: -20°C

Summary

Product Description	Rabbit Polyclonal antibody recognizes Synaptophysin
Tested Reactivity	Hu, Ms
Predict Reactivity	Rat
Tested Application	FACS, ICC/IF, IHC-P, WB
Host	Rabbit
Clonality	Polyclonal
Isotype	IgG
Target Name	Synaptophysin
Species	Human
Immunogen	KLH-conjugated synthetic peptide corresponding to aa. 225-253 (C-terminus) of Human Synaptophysin.
Conjugation	Un-conjugated
Alternate Names	Synaptophysin; MRXSYP; Major synaptic vesicle protein p38; MRX96

Application Instructions

Application table	Application	Dilution
	FACS	1:50
	ICC/IF	1:100
	IHC-P	1:1000
	WB	1:2000
Application Note	* The dilutions indicate recommended starting dilutions and the optimal dilutions or concentrations should be determined by the scientist.	
Positive Control	Mouse cerebellum	

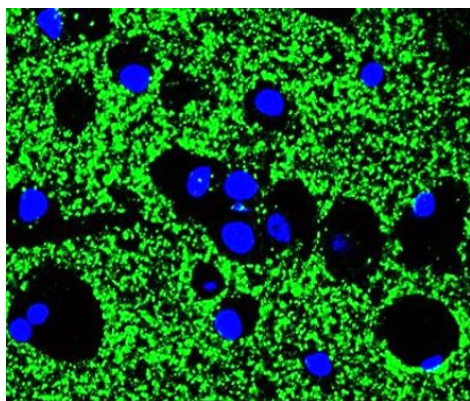
Properties

Form	Liquid
Purification	Purification with Protein A and immunogen peptide.
Buffer	PBS and 0.09% (W/V) Sodium azide.
Preservative	0.09% (W/V) Sodium azide.
Storage instruction	For continuous use, store undiluted antibody at 2-8°C for up to a week. For long-term storage, aliquot and store at -20°C. Storage in frost free freezers is not recommended. Avoid repeated freeze/thaw cycles. Suggest spin the vial prior to opening. The antibody solution should be gently mixed before use.

Bioinformation

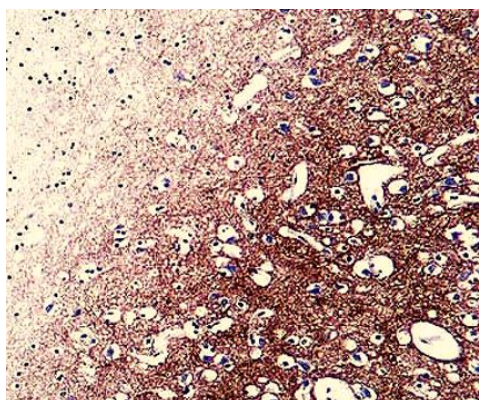
Database links	GeneID: 20977 Mouse GeneID: 6855 Human Swiss-port # P08247 Human Swiss-port # Q62277 Mouse
Gene Symbol	SYP
Gene Full Name	synaptophysin
Background	This gene encodes an integral membrane protein of small synaptic vesicles in brain and endocrine cells. The protein also binds cholesterol and is thought to direct targeting of vesicle-associated membrane protein 2 (synaptobrevin) to intracellular compartments. Mutations in this gene are associated with X-linked mental retardation (XLMR). [provided by RefSeq, Aug 2011]
Function	Possibly involved in structural functions as organizing other membrane components or in targeting the vesicles to the plasma membrane. Involved in the regulation of short-term and long-term synaptic plasticity (By similarity). [UniProt]
Calculated Mw	34 kDa
PTM	Ubiquitinated; mediated by SIAH1 or SIAH2 and leading to its subsequent proteasomal degradation.
Cellular Localization	Cytoplasmic vesicle, secretory vesicle, synaptic vesicle membrane; Multi-pass membrane protein. Cell junction, synapse, synaptosome

Images



ARG56230 anti-Synaptophysin antibody ICC/IF image

Immunofluorescence: Human brain cells stained with ARG56230 anti-Synaptophysin antibody (green). DAPI (blue) for nuclear staining.

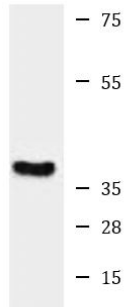


ARG56230 anti-Synaptophysin antibody IHC-P image

Immunohistochemistry: Formalin-fixed and paraffin-embedded Human brain tissue stained with ARG56230 anti-Synaptophysin antibody.

ARG56230 anti-Synaptophysin antibody WB image

Western blot: 35 µg of Mouse cerebellum lysate stained with ARG56230 anti-Synaptophysin antibody.



Mouse cerebellum

ARG56230 anti-Synaptophysin antibody FACS image

Flow Cytometry: Neuro-2a cells stained with ARG56230 anti-Synaptophysin antibody (right histogram) or without primary antibody control (left histogram), followed by incubation with FITC labelled secondary antibody.

