

ARG56204 anti-Prolactin Receptor antibody [B6.2]

Package: 50 µg
Store at: -20°C

Summary

Product Description	Mouse Monoclonal antibody [B6.2] recognizes Prolactin Receptor
Tested Reactivity	Hu
Tested Application	IHC-P
Host	Mouse
Clonality	Monoclonal
Clone	B6.2
Isotype	IgG1, kappa
Target Name	Prolactin Receptor
Species	Human
Immunogen	Semi-purified Human Prolactin Receptor.
Conjugation	Un-conjugated
Alternate Names	MFAB; hPRLr; PRL-R; Prolactin receptor; HPRL

Application Instructions

Application table	Application	Dilution
	IHC-P	1 - 2 µg/ml
Application Note	<p>IHC-P: Antigen Retrieval: Boil tissue section in 10 mM Citrate buffer (pH 6.0) for 10-20 min, followed by cooling at RT for 20 min.</p> <p>* The dilutions indicate recommended starting dilutions and the optimal dilutions or concentrations should be determined by the scientist.</p>	

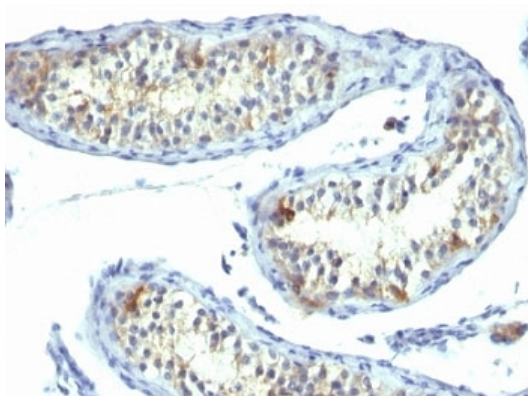
Properties

Form	Liquid
Purification	Purification with Protein G.
Buffer	PBS (pH 7.4), 0.05% Sodium azide and 0.1 mg/ml BSA.
Preservative	0.05% Sodium azide
Stabilizer	0.1 mg/ml BSA
Concentration	0.2 mg/ml
Storage instruction	For continuous use, store undiluted antibody at 2-8°C for up to a week. For long-term storage, aliquot and store at -20°C or below. Storage in frost free freezers is not recommended. Avoid repeated freeze/thaw cycles. Suggest spin the vial prior to opening. The antibody solution should be gently mixed before use.
Note	For laboratory research only, not for drug, diagnostic or other use.

Bioinformation

Database links	GeneID: 5618 Human Swiss-port # P16471 Human
Gene Symbol	PRLR
Gene Full Name	prolactin receptor
Background	This gene encodes a receptor for the anterior pituitary hormone, prolactin, and belongs to the type I cytokine receptor family. Prolactin-dependent signaling occurs as the result of ligand-induced dimerization of the prolactin receptor. Several alternatively spliced transcript variants encoding different membrane-bound and soluble isoforms have been described for this gene, which may function to modulate the endocrine and autocrine effects of prolactin in normal tissue and cancer. [provided by RefSeq, Feb 2011]
Function	This is a receptor for the anterior pituitary hormone prolactin (PRL). Acts as a prosurvival factor for spermatozoa by inhibiting sperm capacitation through suppression of SRC kinase activation and stimulation of AKT. Isoform 4 is unable to transduce prolactin signaling. Isoform 6 is unable to transduce prolactin signaling. [UniProt]
Calculated Mw	70 kDa
Cellular Localization	Cell surface and cytoplasmic

Images



ARG56204 anti-Prolactin Receptor antibody [B6.2] IHC-P image

Immunohistochemistry: Formalin-fixed and paraffin-embedded Human testicular carcinoma stained with ARG56204 anti-Prolactin Receptor antibody [B6.2].